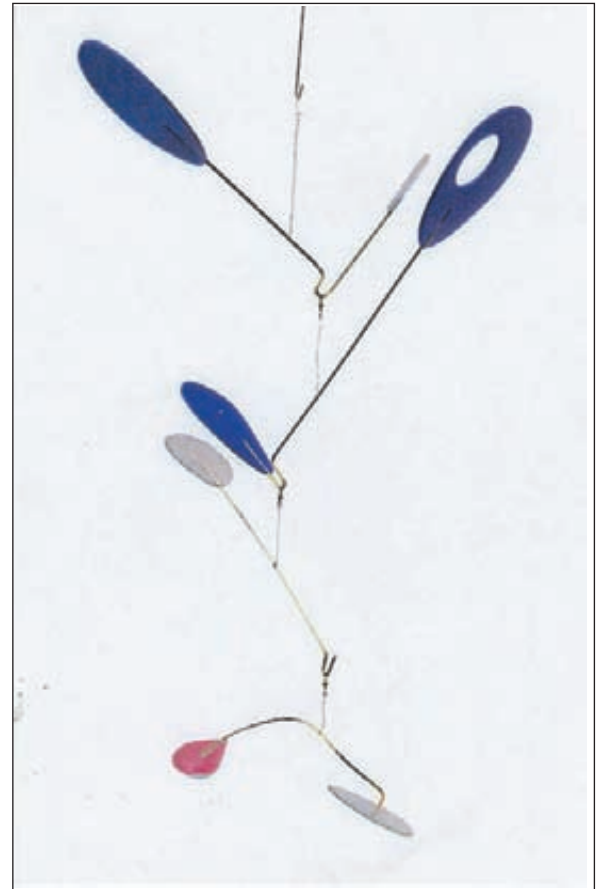


Ted Martland



Alexander Calder once mused, “My whole theory about art is the disparity that exists between form, masses and movement.” Theodore H. Martland animates his colorful mobiles with dynamism and power. His exceptional ability to infuse his works with movement delivers an energetic presence that uplifts the viewer. “Motion allows each and every relationship to constantly change, offering a variety of elements and inter-relationships,” Mr. Martland said of his kinetic pieces. The geometric shapes delicately dance around one another, creating lively motion. Mr. Martland employs contemporary materials that catch the light, adding changing illumination to his visual effects. The artist’s use of bright colors is equally striking, and his forms hang with complete equilibrium. In his mobiles, shape, size, color, space and movement combine and recombine in shifting, balanced relationships that provide a visual equivalent to the harmonious but unpredictable activities of nature. ■



Ingrid II
Plastic and Dichroic Glass Mobile,
36” x 18”

Diane Holland



Antonio Malmo, international art critic and expert in modern art, has stated “Diane Holland has energy, imagination, vitality, creative power and expressive strength in the unity of pure emotion, sincerely painted onto the canvas with innermost sharing.” Her outstanding work carries a multitude of movement, dynamism, and vitality. Dark, bold lines twirl, spin, and gyrate around one another in an energetic dance of gallant dye. Ms. Holland juxtaposes converse colors in her magnificent canvases, creating strong, contrasting hues that strengthen the artist’s series. Ms. Holland fills her stunning, rich canvases with beautiful colors to entirety, providing the viewer with a plethora to contemplate and

to enjoy. An innovative member of the world of abstraction, Ms. Holland creates works of art that are incredibly inspirational and uplifting. Mr. Malmo emphasizes her prominence, stating “I affirm that Diane Holland has undoubted natural endowments which are augmented with the times”. ■

Dynamic, Oil Enamel on Paper, 19.5” x 26.5”

