



Amsterdam Whitney Gallery

“CHELSEA CURATORS’ CHOICE”

June 6th- August 31st, 2026

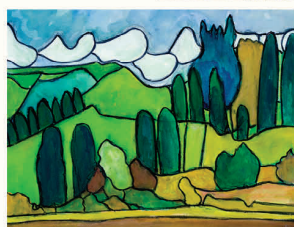
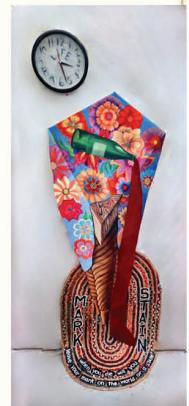
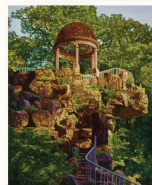
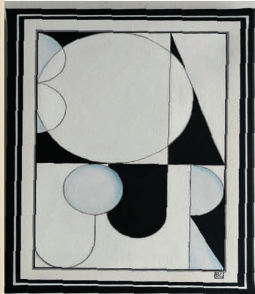
“AMERICAN DREAM”

Champagne Soirée:

SATURDAY, JUNE 6, 2026 from 2:00-4:00 pm



NANCY BALMERT
 DONNA CARNAHAN
 BARBARA CHRISTOL
 MERRILL FRENCH
 FRANK HOFFLER
 MARK JACOBSON
 JACK JASPER
 NERYS LEVY
 SUBODH MAHESHWARI
 ANNE SWAN MOORE
 JOHN PETERS
 SALLY RUDDY
 BERNHARD SCHMIDT
 TOM SCHNEIDER
 SHERRY SHEFTS
 CAMPBELL AVERY SMITH
 KATHY STANLEY
 LIHONG ZHANG





AMERICAN DREAM ROSE

Oil on Canvas

20" x 24"

NANCY BALMERT

Artistically personifying Pierre Bonnard's statement: "Art will never be able to exist without nature," the radiant landscape and floral paintings of Nancy Balmert extraordinarily embody the timeless connection between art and the natural world. Through luminous color, exquisite detail, and masterful technique, Nancy Balmert transforms the natural world into powerful expressions of beauty, vitality, and wonder, manifesting an aesthetic affirmation of Bonnard's belief that art and nature are inseparable. Incandescently reminding us that nature remains one of humanity's greatest sources of inspiration, her masterpieces offer moments of magic, serenity, and transcendence, inviting us to appreciate and reconnect with the rhythm of the natural world.

Known internationally for her mastery of the natural terrain, the Texas resident who is renowned as the "Queen of Nature," pictorially encapsulates the essence of nature with remarkable sensitivity and precision. Elevating blossoms and leaves beyond simple botanical studies, her breathtaking oil on canvas compositions reveal emotional resonance, graceful movement, and luminous presence. Inspired by the splendor of gardens and the endless variety of nature's forms, Nancy Balmert's oeuvre reflects a lifelong fascination with the beauty of the natural world and a dedication to celebrating its abundance. Visually inviting viewers into a world where trees and flowers become symbols of joy, hope, and renewal, her work magically reverberates with the inherent harmony of humanity's relationship with nature, inspiring us to coexist in a counterpoint of wholeness.

Masterfully crafting visually compelling compositions through seamlessly blended edges, coupled with the supreme command of light and shadows, Ms. Balmert's atmospheric, expressionist dreamscapes depict a sensorial vision of the natural world. Evocative and immersive, she engulfs the viewer in the shifting weather of the rolling waves, juxtaposed with the quiet, peaceful aura of her floral and still life work. By translating these ephemeral moments onto canvas, she preserves their permanence and beauty for eternity. Striving to illustrate the same wonderful clarity of light that so profoundly moved Monet, Van Gogh, Cézanne, Bonnard, and the great Dutch Masters of the Seventeenth Century, she employs intense colors and bold, thick brushstrokes to elicit both momentary visual impressions intermingled with a profound emotional reaction.

In addition, Nancy Balmert translates the techniques of the Old Masters, including Rembrandt and Peter Paul Rubens, skillfully utilizing dramatic lighting, rich pigments, and delicately softened edges to create paintings of striking depth and realism. While her technical foundations are rooted in classical traditions, her vibrant palette and contemporary scale bring a fresh and exhilarating energy to her floral and landscape subjects. Glowing with life, her flowers appear to emerge from the canvas, encouraging viewers to experience their elegance and spirit, for they are living embodiments of nature's poetry. Seeking to capture their movement, vitality, and emotional presence, she adroitly transcribes their fleeting beauty into enduring works of art. Through her meticulous observation and artistic vision, each bloom and leaf becomes a celebration of color, light, and life itself. Echoing the beauty and energy of the land, sky, and water, Nancy Balmert illustrates the sublimity and divinity of Mother Nature.

Tempered with a spiritual ambiance, her works balance the fragile relationship that humanity shares with our universe. Heightened by a sense of sharp contrasts, Ms. Balmert emphasizes the ephemeral and fleeting composition of the environment, which is characterized by a distinctive visual language. Merging a polychromatic color palette within a meticulously rendered, precise composition, she intertwines elements of the color wheel, allowing viewers to contemplate the beauty and power of the natural environment.

Art and nature occupy a predominant position in the oeuvre of Nancy Balmert, who achieves a sense of presence, time, and continuity with the past, along with an appreciation for visual harmony. By means of her insightful application of the modernist aesthetic to the tradition of nature painting, she demonstrates an enduring commitment to beauty in art through the timeless contemplation of the joie de vivre of nature.



ELK HARBOR
Oil on Linen
18"x24"

NANCY BALMERT

Elegant, timeless and eternal, Nancy Balmert's oeuvre is unrivaled and unmatched in achieving global fame in the international art world. Internationally celebrated, Nancy Balmert exemplifies an art-forward renaissance woman with multi-faceted artistic talents who has scaled to the pinnacle of heights in the global art world. Traveling to multiple continents, Nancy and her husband, Paul search for the perfect flower or iconic scene. Also painting in Seattle, Washington as well as in Texas, the internationalist Nancy Balmert, has cultivated a strong reputation in the international art world. Globally awarded for her world-renowned floral paintings, in 2018, Ms. Balmert received numerous international awards including: The International Prize Leonardo Da Vinci, in Florence, Italy, and in March, the International Prize of Nations Tribute to Tiziano in Venice, Italy. In 2018, she was awarded the International Prize Raffaello in Bologna, Italy. Moreover, she was honored in Rome, where she received both the International Prize Giulio Cesare and I Segnlati award. Continuing this path of success, in 2018, she was honored in Bruges with the International Biennial Prize of Flanders. Furthermore, in 2018, inside the Litta Theater in Milano, Ms. Balmert received the International Prize Caravaggio –a Great Master of Art International award. Highlighted in both books: The Best Modern and Contemporary Artists 2018, as well as in Contemporary Art Curator Magazine, she was chosen as one of the 100 Artists of the Future and was showcased in the 2019 art book 100 Artists of the Future. Continuing this success trajectory, in 2019, Ms. Balmert was awarded the International Prize Botticello, at the Borghese Palace in Florence, Italy. The accolades continue as she was crowned with the International Prize Diego Velazquez, at the Barcelona, Spain European Museum of Modern Art. Honored in 2019, this cosmopolite was awarded with the 2019 International Prize Artist of the Year, in Mantua, Italy, by nine European curators who selected her works to be one of fifty international artists to be published in the International Art Book, ARTISTI. Her awards also include the International Prize Michelangelo, Brancaccio Palace, in Rome, Italy. Additionally, her sumptuous floral paintings were exhibited in Rome, Bruges, Belgium and Milan, Italy at the Gonzaga Museum, for Mantua Contemporary Art Biennale Mantua, and at the Museum of Modern European Art in Barcelona.

In 2020, Nancy Balmert, the “Queen of the Flower World,” was crowned with the International Prize Frida Kahlo in Milan, Italy. Elsewhere in Italy, she exhibited at the International Norman Biennial, in Monreale at the Modern and Contemporary Art Museum G. Sciortino, where she received the International Artist of 2020 award. Highlighted as one of the 50 international artists in The New Artbook of International Contemporary Art, which also included a prestigious exhibition in Florence, at Palazzo Ximènes Panciatichi, in Florence, Italy, Nancy Balmert was showcased in The Great Encyclopedia of International Art, featuring images of her museum-caliber paintings. To add to this honorary list, she was also showcased in Encyclopedia Art Dossier 2020. In 2021, Ms. Balmert was chosen as one of 50 (International) Artists to Invest in and was awarded International Prize “Ambassador of Art” 2021. She was honored to be included in the prestigious “Art Universal Encyclopedia of International Art.” In October 2022, Nancy Balmert was invited to exhibit at the Louvre Museum, in Paris, France. Most recently, in May 2026, Nancy Balmert received a coveted and prestigious artistic award in Spain. Added to the apex of Nancy Balmert's widely acclaimed credentials is being a noted published author, having published “Moments of Truth: A Tour of the Other Side.”



MEDITERRANEAN SUMMER
Photograph on canvas, limited edition 2/6
24" x 34

DONNA CARNAHAN

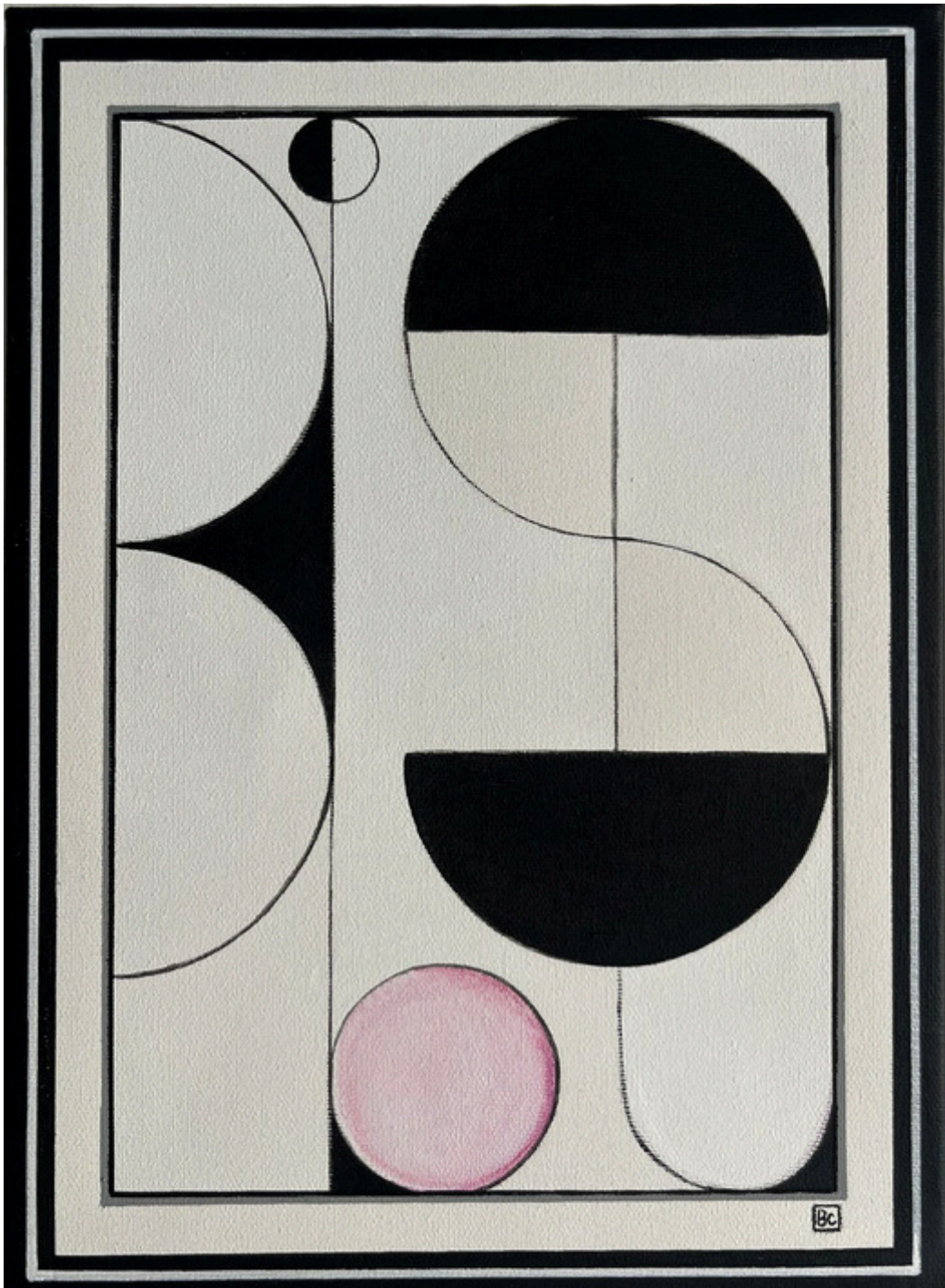
Optically galvanized by Ansel Adams, who observed, “Landscape photography is the supreme test of the photographer,” Texas photographer Donna Carnahan’s stunning Italian photography oeuvre transports viewers to the heart of Italy’s most enchanting landscapes. Through her discerning eye and artistic sensitivity, she creates photographs that transcend documentation, becoming poetic meditations on place, history, light, and culture. Brilliant and inspired, “LaDonna’s” photographs serve as a doorway into other worlds disparate from the lives we live daily, an adventure contained in the camera lens.

Inspired by Italy’s extraordinary beauty, Donna Carnahan’s lens celebrates Italy’s timeless allure—from sun-drenched Tuscan hills and ancient stone villages to serene waterways, dramatic coastlines, and architectural treasures steeped in centuries of history. Revealing not only the grandeur of Italy’s iconic vistas but also the intimate moments that define its enduring character, such as a quiet cobblestone street bathed in golden light, weathered facades adorned with flowering vines, or the tranquil reflections of historic structures mirrored in still waters, her dazzling photography encapsulates eternal moments and mesmerizing views.

A mastery of composition and natural light allows her “Third Eye” to capture the emotional resonance of each scene. Historic images invite viewers to experience the romance, serenity, and authenticity of Italy beyond the postcard view. Through subtle tonal variations and an acute awareness of atmosphere, she transforms landscapes into visual narratives that evoke memory, nostalgia, and wonder. Drawing upon the traditions of both fine art photography and travel photography, Donna Carnahan creates works that are at once documentary and deeply personal, reflecting a profound appreciation for Italy’s cultural heritage while celebrating the universal human desire to connect with places of beauty and meaning.

Underscoring that nature is universal and can be experienced by everyone, she captures fragments of eternity and freezes them, achieving compositions of illuminated visual contemplation. Successfully distilling a singular scene into a single moment in time, “LaDonna” achieves a delicate balance by probing an inner depth and a dynamic power of imagery, resulting in emotive and aesthetically memorable scenes. Her virtuosic perception offers a visual journey through Italy’s treasured landscapes, inviting audiences to pause, reflect, and immerse themselves in the timeless elegance of a country that has inspired artists for centuries. Augmenting a sense of externalism, her photographs stand as eloquent tributes to the enduring relationship between light, land, architecture, and the human spirit.

Through her lens, the soul of Italy becomes more than a destination—it becomes an experience, a memory, and a work of art, with photography that shares a co-relationship with Mother Nature. Charged with life and energy, each one of her photos is an amalgamation of human civilization on earth, demonstrating the importance of nature to the world itself. Having cultivated a strong reputation in the national and international photography art world, “LaDonna’s” photographic landscape oeuvre has earned accolades for translating her personal vision to reflect a spiritual connection with the topography of the realm. The recipient of numerous awards, Donna Carnahan has participated in international exhibitions such as the Florence Biennale, and the presence of her works in prestigious corporate and private collections affirms his continually expanding reputation.



BISOU
Acrylic on linen canvas
13" x 9.25"

BARBARA CHRISTOL

Aesthetically identifying with Auguste Herbin’s statement that “Art is a language that is universal,” Barbara Christol’s “Little French Story,” unfolds twelve paintings, each a small treasure, presenting a familiar French word that is widely used worldwide. Drawing inspiration from the pioneering “plastic alphabet” of Auguste Herbin, Barbara Christol artistically aligns her oeuvre within a visual lineage that merges abstraction with semiotics, where letters, forms, and colors operate as a visual language. Painted in black and white, with an occasional punctuation of color, her work illuminates and echoes each word. Poetically transforming language into a luminous visual experience, French-based Barbara Christol highlights her signature geometric and abstract language, imbuing it with a lightness and wit, as she invites viewers into a quiet dialogue between word and image.

Intellectually and artistically playful, “Little French Story” transfigures language into an optical odyssey of rhythm, structure, and poetic resonance. Comprising a collection of familiar French words, each work of art is instantly recognizable yet newly reimagined through her distinctive geometric abstraction. Entitling her works with iconic phrases such as Bonjour to Au Revoir., phrases that evoke the elegance, charm, and cultural mythology of France, her art transcends literal significance. Linguistically, each canvas becomes both a sign and a symbol—an interplay between reading and seeing.

Influenced by the broader traditions of typography, calligraphy, and visual writing, Little French Story reimagines the relationship between text and abstraction. From Bisou to Chic, these universally cherished expressions become more than language; they are distilled into visual essence—at once elegant, contemplative, and evocative of the enduring allure of French culture. In Barbara Christol’s hands, each letter becomes a structural element, each word a compositional force—harmonizing geometry, meaning, and emotion into a cohesive and captivating whole.

Lyrical intertwined, Barbara Christol’s twelve petite treasure paintings form a cohesive narrative sequence—a visual poem in which language dissolves into form, and meaning emerges through composition, balance, and gesture. Little French Story is at once intimate and universal, offering a meditation on communication, cultural identity, and the enduring power of abstraction. Each gem painting sparkles and sings with the most familiar and widely spoken French word, identified across the globe. Executed in acrylic on linen, the series unfolds through her signature geometric and abstract vocabulary, where clarity of form meets a quiet, resonant lyricism.

Committed to creativity, this visionary artist ingeniously recontextualizes a fresh perspective on art, uniquely encapsulating the employment of words with art. Globally acclaimed, her innovative oeuvre liberates words from their conventional role, cultivating a unique algorithmic style which visualizes the universe through the tantalizing employment of words and shapes. By offering a visual syntax on language as both universal connector and aesthetic form, Barbara Christol reveals the poetry embedded within the simplest of words and affirms her place within the tradition of artists who explore the boundary between text and image, while contributing a voice that is both sophisticated and delightfully accessible.



LA GUARDIA PLACE
Oil on Linen
32" x 38"

MERRILL FRENCH

Visually responding to Georgia O’Keeffe’s observation, “Every city has its own pulse, its own rhythm of light and movement,” Merrill French’s iconic New York Cityscapes offer a unique perspective and an enchanting vision of the emblematic images of “The Big Apple.” With New York City as her artistic muse, she presents frozen pictorial snapshots that immortalize the streets, skylines, and metropolitan moments into evocative visual experiences that transcend place to become reflections of memory, movement, and modern living. This eternal love affair with New York City encapsulates an urban kaleidoscopic view of New York’s legendary images.

Dedicated to realistically commemorating exuberant city life, she immortalizes famous New York City landmarks that overflow with color, she harvests the exciting spirit, dazzling hues, and illuminated light of the “City that Never Sleeps.” Emblematic of the ever-changing rhythms of New York City locations, the Connecticut-based artist explores the interplay of light and structure within the urban environment. Streets shimmer with reflected light after rainstorms, towering buildings dissolve into abstraction, and fleeting moments of daily life emerge through richly textured surfaces and atmospheric color palettes. The works balance realism with painterly interpretation, inviting viewers to experience the city not simply as architecture, but as emotion and sensation.

Echoing the long tradition of celebrated cityscape artists who have sought to reveal the spirit of metropolitan life through art., Ms. French’s dynamic urban narratives illustrate the intricate and expressive cityscapes. Merrill French approaches the city as both subject and metaphor — a place of energy, solitude, beauty, and transformation. With a refined sensitivity to perspective, color harmony, and movement, she creates compositions that pulse with contemporary vitality while retaining a timeless painterly elegance. Layers of texture and gestural mark-making suggest the constant motion of the modern world, while moments of quiet luminosity offer contemplation amidst the density of the urban landscape.

Quintessentially presenting a compelling body of work that celebrates the architecture, atmosphere, and emotional resonance of the city, she shines the spotlight on glowing avenues and reflective windows to abstracted skylines and intimate street scenes. Renowned for showcasing New York City scenes where the familiar becomes cinematic, and the everyday becomes extraordinary, Merrill French’s cityscapes ultimately remind us that cities are living works of art themselves — places where light, humanity, and structure continuously converge to create beauty, complexity, and endless inspiration.

Both modern and timeless, Merrill French’s evanescent compositions provide beauty and inspiring concepts as she commemorates the splendor and glory of New York City. With unique imagination and high artistic skills, she challenges the viewer to treasure the transient and cultural wonders of New York City. Acclaimed both internationally and nationally, her art is treasured by both national and international collectors who delight in her unique artistic visions. A true lover of New York, she is also a member of the Salmagundi Club.



RESURRECTION
Oil on Canvas
30" x 24"

FRANK HOFFLER

“Color directly influences the soul,” declared Wassily Kandinsky. Visually manifesting this belief is Wisconsin-based artist Frank Hoeffler, whose kaleidoscopic abstract expressionist compositions explore the visceral intricacies of human existence. By examining the emotional organic terrain of the immediate, his recent collection pivots the most profound insights into dazzling non-objective panoramas that are ablaze with emotion and intellect. Adroitly conveying the duality of the mind and the heart, his powerful work filters the artist’s creative imagination and emotions, presenting a fragmented fusion of life, illustrating a dramatic window into the natural world.

Spanning realism, impressionism, expressionism, and abstraction, Frank Hoeffler approaches painting as an emotional and sensory experience. Whether depicting recognizable environments or nonrepresentational compositions, his work is guided by instinct, movement, and the psychological power of color. Saturated reds pulse with energy and passion, luminous blues evoke introspection and calm, while layered textures and gestural forms create a sense of movement and emotional depth. A hallmark of his oeuvre is his signature use of emotive color, which reflects a visual lexicon that contributes to the expressionistic element of his work. Employing a kaleidoscopic color palette that is designed to stir the emotions and challenge the senses, he creates an aesthetically unique artistic vision. This gifted artist creates a visual language of emotion and expression, displaying a complete understanding of the artistic poetry of emotion, thought, and concept.

Driven by emotion and sensation—an immersive process where color and gesture become extensions of the artist’s inner world, his abstract oeuvre reveals intense, thick applications of paint and intentional strokes. Transforming his canvases into an arena of personal expression and emotional release, his ability to move fluidly between representation and abstraction allows viewers to experience both the physical beauty of paint and the psychological atmosphere that is created.

Radiating kinetic high energy, color serves as one of the most powerful tools for communicating emotion, mood, and spiritual intensity. Like the great modern colorists and expressionists before him, Frank Hoeffler harnesses color not simply to depict reality, but to transcend it. Echoing the understanding that color can soothe, energize, provoke, or transport the viewer beyond language into pure feeling, his series is a catalyst for filtering complex experiences into a fixed visual forms.

Ultimately, celebrating the transformative and emotional force of art itself, the artist dazzlingly captures the raw passion of the heart. Rich in atmosphere, movement, and painterly confidence, his work invites viewers to experience painting not merely as observation, but as sensation—an encounter where color becomes emotion made visible. The award-winning painter has participated in a lifetime of immersion in the arts, culminating in his participation in prestigious exhibitions in Europe and the U.S., and the presence of his works in prestigious collections across the world is an affirmation of his continually expanding reputation.



GAZEBO IN SPRING
Oil on Archival Canvas Board
21.5" x 26.5" Plus 2" Frame

MARK JACOBSON

Georges Braque said of nature, “It suggests emotion, and I translate that emotion into art.” Inspired by this philosophy, Mark Jacobson celebrates the majesty of nature in his landscape paintings, portraying the drama inherent in monumental panoramas and vistas. By creating contemporary versions of classic romantic landscapes, Dr Jacobson pays homage to the magnificence of the natural world, reflecting his visceral response to the natural terrain. By inviting us on a sensorial experience with the terrain, this gifted artist’s organic nature reveries illustrate the sublime grandeur of nature. Capturing its lush terrain and gentle expanse, he carefully highlights the natural realm with a polychromatic color wheel as he masterfully brings to life the vibrancy of Mother Nature.

Emotionally responding to nature’s splendor, Mark Jacobson adopts expressionistic principles to transmit nature’s harmonic potential. By merging the observed world with the poetic and the emotional dimensions of imagination, his compelling body of landscape paintings creates visual narratives that invite viewers into deeply personal and contemplative spaces. Fluidly moving between realism and dreamlike reverie, he seamlessly captures the lyrical resonance of nature rather than merely its appearance. Evoking quiet gardens, shifting skies, radiant forests, and mysterious horizons, he masterfully creates panoramas with a unique visual language that combines expressive brushwork with imaginative storytelling, encouraging viewers to experience each painting as both a landscape and a psychological journey.

Frequently infused with symbolic figures that suggest transformation, memory, and spiritual reflection, Mark Jacobson’s rich painterly textures and vibrant palette create an immersive atmosphere where nature becomes both sanctuary and metaphor. Inspired by the beauty and complexity of the natural world, his work explores themes of balance, wonder, and human connection to the environment. Whether depicting tranquil summer gazebos, autumnal guardians, or luminous bridges of color and light, his paintings reveal a reverence for landscape as a place of introspection and emotional discovery.

Incandescently shining the spotlight on the natural realm, Mark Jacobson’s oeuvre is poetic in precision and poignant in purity of form. Transporting the viewer to an extraterrestrial universe of serenity and harmony. Rather than documenting his vistas, he nurtures his own personal connection with nature that conveys the emotional effects of his unique vision of the environment. With a cosmic swirl of jewel-toned hues, his symbolic use of color has a luminous and radiant effect and unveils a mystical world more vital than our illusory experience.

Hovering between the earthly and the spiritual, Mark Jacobson’s panoramas provide a vivid interpretation of the external world. The artist offers a parallax vision that radiates the powerful energy of Mother Nature and reflects the harmonious relationship between the psyche and the organic terrain. The clear quality of light and attention to atmospheric conditions evoke traditions of nineteenth-century romantic landscape painting and twentieth-century expressionist landscape painting in which the natural world was regarded with awe. With his unique ability to employ color to achieve ethereal clarity, he encapsulates fragments of eternity and freezes them to achieve illuminated visual contemplation. The award-winning painter, who is also a doctor, has participated in a lifetime of immersion in the arts, culminating in a wonderful body of work, and has embarked on a painting career that has catapulted him into a meaningful global position in the contemporary art arena.



NUCLEUS
Acrylic on Canvas
52" x 38"

JACK JASPER

“What I want to show in my work is the idea that hides itself behind so-called reality. I am seeking for the bridge that leans from the visible to the invisible through reality. It may sound paradoxical, but it is in fact reality which forms the mystery of our existence,” declared Max Beckmann. Transcending perception, Chicago-based artist Jack Jasper’s magical oeuvre is an escapist journey beyond lived reality as he expresses the visible mysteries and the cyclical nature of the universe. Mr. Jasper states: “My theory of art and life is dialectical. From one point of creation, all contradictions arise. I try to use my art to reconcile these contradictions and to achieve synthesis and— ultimately—transcendence.”

Creating an alternative visual universe on canvas, Jack Jasper’s semi-figurative abstracted acrylic on canvas forms coexists in a chimerical parallel realm. Metaphorically articulating intellectual themes ranging from Greek mythology to the natural sciences in his abstracted, semi-figurative oeuvre, his paintings expand viewers’ interpretations of existing invisible reality. Classically inspired titles such as “NUCLEUS” and “OUROBOROS,” entice the viewers’ consciousness to exceed preconceived expectations about representational definitions. Bringing together the two distinct realms of invisible and visible natural existence, actual reality and the imaginative unconscious, he harmoniously fuses them into one single realm.

Through masterful abstraction of silhouettes and forms, Jack Jasper simplifies the concepts of nature by juxtaposing elongated figures against dynamic shapes that speckle the canvas. His oversized canvases illustrate the dynamism of opposite realities, which paradoxically blend to create symbolic natural contradictions that arise during creation. With pensive provocations to inspire human consciousness into thoughtful contemplation of universal desires, emotions, and circumstances, Mr. Jasper’s dazzling pastel color palette and dynamic brushstrokes range from fluid organic lines, confetti speckles, and hard-edged bursts of color, all of which harmoniously synthesize into a single composition.

Viscerally reinterpreting reality and unreality, his pastel palette contributes to the other-worldly aesthetic effect with hues ranging from lavender, mauve, pink, blue, and turquoise- all of which intermix to create expressive, abstracted canvases. This labyrinthine vortex of soft tones metamorphoses into semi-abstracted forms, which are juxtaposed with spurts of subdued violets as they intermingle with lemon yellow hues and distinct pink curvilinear shapes. A marriage of organic line work and opulent saturation of colors reflects brilliant energies of unknown and unconscious realities.

Mysteriously provocative and compelling, Jack Jasper’s emotive, elaborately symbolic fulcrum of fantasia canvases expose the complexities of life reverberating with an exciting visual context. This sense of fantasy and of the unreal, combined with an amalgamation of the logic of time and place, creates a dynamic, fragmented reflection of alternate realities. Resonating with an expressive imprimatur, Jack Jasper’s evocation of fantastical realms is essential to his visual signature style.

Luminously transcending the real world to a new world re-envisioned with fresh eyes, Jack Jasper’s virtuosic masterpieces embody the eternal and visceral. The many collectors of the award-winning Jack Jasper celebrate his unique artistic vision, and his artwork is housed in many elite public and private collections. Recognized nationally and internationally, Jack Jasper received his BFA and MFA from The School of the Art Institute of Chicago. Successfully exhibiting in major cities, including New York City and Chicago. Amsterdam Whitney Gallery is proud to showcase this acclaimed contemporary star.



FROM CALTRANA, VENETO, ITALY

Mixed media watercolor and water-soluble pen on paper

18"x24"

NERYS LEVY

Norwegian environmental activist, Greta Thunberg declared: “We all have a choice. We can create transformational action that will safeguard the living conditions for future generations. Or we can continue with our business as usual and fail.” Deeply rooted in this belief of ecological activism, Dr. Nerys Levy’s artwork illustrates and disseminates the message of “Save our Planet.” Sharing a co-relationship with Mother Earth, she has globally worked on many continents, bestowing her passionate artistic message of conservationism of our ecosystem. Communicating her love of the environment through her art, she educates the community about climate change and encourages her audience to preserve, protect and conserve the environment and the bounty of Mother Nature.

Committed to environmental advocacy through her landscape paintings, Dr. Nerys Levy champions the triumph of nature as she pays homage to the fragility of the earth. Galvanized by the impact of climate change on our environment, she is grounded in defending our ecosystem, urging us to preserve the legacy of our land. By addressing the escalating environmental crises, her oeuvre is a catalyst which reflects the profound impact of climate change on our planet. Accentuating the artistic connection between humanity and nature, she shines her artistic spotlight on the fragility of our ecosystem as she re-kindles a renewed reverence and stewardship for the Earth.

While awakening a spirit of guardianship of our imperiled planet, her aesthetic narrative urges her audience to preserve our delicate planet. Transcending mere expression to become a potent force for change, Dr. Levy’s oeuvre unearths the profound repercussions of climate change, deforestation, pollution, and the loss of biodiversity as she endeavors to spark vital conversations about our planet. Through her visual renderings, she encourages viewers to contemplate the intricate beauty of our surroundings and to recognize the urgency of safeguarding the environment for generations to come.

Artistically illustrating the beauty of our environment and inspiring us to treasure its infinite intricacies, Dr. Nerys Levy’s oeuvre is a beacon of light, cajoling us to respect our universe. Traveling the world including the Arctic and the Antarctic, she paints on site, and her plein-air compositions capture nature’s energy and glory. By highlighting the color, beauty, and forms of the Earth’s upper latitudes as well as the Polar regions, this gifted artist draws our attention to what is rapidly being lost as a result of climate change.

Inspired by the earth, the water and the sky, her vibrant colors coalesce into canvases of dynamic vitality which manifest the raw energy of nature. Reverberating with a palette that cascades from the heavens, dazzling cauldrons of color with their polychromatic hues convey the dynamic beauty and the forces of the natural world. Pulsating with the color wheel of nature, her wondrous compositions explode with verdant greens of the trees and cool blues of the water. Each broad brushstroke seeks to inspire others to appreciate the beauty of our planet while urging action to combat the existential threat of the global climate crisis.

From early childhood, Dr. Nerys Levy has possessed a love for creativity and a deep concern for preservation of the environment. Welsh born, educated in the United Kingdom, and now living in Chapel Hill, North Carolina, Nerys Levy channels her passionate conservation mission into her art. Inspired by her Welsh background which has influenced her painting, her Polar experiences have resulted in her deep long-term commitment to educating the community about climate change and her work was shown at four North American museums in the traveling exhibition “Vanishing Ice.” The Arctic/ Antarctic section of her website The Art of Nerys Levy is being promoted as a valuable educational resource for elementary school children by Disney Penguins- Disney’s educational platform, the UK’s Times Educational supplement’s website and the UK Schools Inspectorate. Nerys Levy also teaches art at FRANK Gallery, Chapel Hill where she chairs that Gallery’s outreach endeavors. Exhibited nationally and internationally, her work is treasured in many private collections. Amsterdam Gallery is proud to shine the spotlight on this natural star!



TURMOIL
Acrylic on Canvas
40" x 30"

SUBODH MAHESHWARI

“I found I could say things with color and shapes that I couldn’t say any other way,” stated Georgia O’Keeffe. Illustrating this concept are the internationally acclaimed paintings of India-born, California based artist Subodh Maheshwari MFA, whose vibrant paintings radiate a visionary fusion of culture, color and spirit. Uniting Eastern symbolism with Western compositional sophistication, their rich visual language of luminous color, expressive heart-shaped forms, and poetic narratives transcends cultural boundaries as they celebrate the universal themes of love, spirituality, nature, and the human experience.

Born in Aligarh, India, and educated at Agra University, California State University Fullerton, and the University of California Irvine, Subodh Maheshwari, MFA draws upon a lifetime of artistic exploration and cross-cultural influences. Her paintings reflect the intricate beauty of traditional Indian aesthetics while embracing the freedom and innovation of contemporary art. Influenced by the rich visual traditions of Rajasthani and Mogul art, her work often incorporates poetry, passages, and symbols in Hindi, Sanskrit, and English, creating deeply personal and multilayered narratives.

Distinguished by her masterful use of color, her saturated hues, radiant light, and dynamic compositions transform her canvases into immersive environments where emotion and imagination converge. Whether depicting flourishing florals, evocative landscapes, abstract expressions, or symbolic meditations on social and spiritual themes, her paintings invite viewers into a realm of wonder, reflection, and discovery. Emotional, mysterious, spiritual, and deeply poetic, nature serves as a profound source of inspiration throughout her oeuvre. Flowers bloom with symbolic significance, trees become metaphors for growth and renewal, and abstract forms evoke the rhythms and energies of the natural world.

With heart-based loved themes, her expressionist emotional oeuvre is characterized by a timelessness of place. Subodh Maheshwari adroitly portrays chromatic atmospheric environments that commemorate nature’s divinity. By immortalizing the permanence of our natural world with illuminated panoramas and mosaic-hued compositions, she transports the viewer to engage in a romantic dialogue with the natural world. Color and light work to create a fantasy that reflects the reality of it all, something that is idealized and yet still rings true to the actual setting and ambiance. This gifted master underscores the spiritual essence and joie de vivre of nature as her paint brush renders nature with a fresh reinterpretation.

A recipient of numerous honors, including the prestigious Bharat Gaurav Award and the University of California Irvine Regional Fellowship Award, Subodh Maheshwari has exhibited nationally and internationally, earning recognition for her extraordinary artistic achievements and contributions to the arts. Her paintings reside in private and public collections worldwide and continue to inspire audiences with their beauty, depth, and humanity. Magical and mystical Subodh Maheshwari’s remarkable body of work, color becomes a language of the soul, bridging cultures, generations, and experiences as her masterful paintings celebrate the enduring power of creativity to illuminate, heal, and connect us to the world around us.



IN MY GARDEN VII

Oil on Canvas

12" x 12"

ANNE SWAN MOORE

Monet mused: “My garden is my most beautiful masterpiece.” Motivated by Monet’s observation, Anne Swan Moore follows a long tradition of nature-inspired art, as she explores the sensorial legacy of nature and continues humankind’s profound quest to find beauty in our natural terrain. This San Diego-based virtuosic, master’s landscape, floral, swan, and still life paintings capture the beauty of nature in an unusual way, offering color-filled reveries featuring an imaginative, fresh, expressionistic perspective. Illuminating the natural world, her diverse oeuvre showcases visions of earthly delight that radiate superlative color and light, becoming artistic dialogues that reveal the essence of the environment and focus on the joys of the natural realm.

Acutely connected to the aesthetics of the terrain, Anne Swan Moore’s “Gardens of Eden” intermingle an exquisite sensitivity to Mother Nature as she accentuates the fragility and intensity of the inner terrestrial world. While echoing the beauty and energy of nature, her works balance the fragile relationship that humanity shares with the environment. Heightened by a sense of subtle contrasts, she emphasizes the ephemeral and fleeting composition of nature as she illustrates the sublimity of the natural world. This rendezvous with the terrain radiates a celestial visual dialogue surrounding our land.

Resonating with gossamer glimmers of light, Anne Swan Moore’s atmospheric expressionist garden scapes depict an imaginary vision of the origins of the natural world. Encapsulating a lyrical sense of romanticism, her garden scape series reflects a masterly use of color, shape, and texture as each scene contributes to an extraordinary reflection. By inviting the viewer on a visual voyage to her secret garden, she transports us to idyllic gardens through her chromatic color palette, tantalizing texture, and radiant luminescence, as we enjoy an intimate tête-à-tête with nature.

Painting a paradise on earth, Ms. Moore enshrines that which is beautiful and skillfully balances this narrative with a superb formal technique utilizing a brilliant spectrum of hues. A dazzling kaleidoscopic color-wheel of sun-kissed tones implode with punches of warm red, verdant green, and sun-dappled golden tones, which add depth and movement to her striking vistas. Her dreamscapes’ colors burst forth from the canvas with an explosive and effervescent charm as these environs dazzle the eye. A tantalizing interplay of light and shadow radiates the magical scenes, imbuing her joyful paintings with ambrosial effects. Anne Swan Moore’s efflorescent dreamscapes are a reaffirmation of the aesthetic joys of the outdoors, providing serenity and harmony with our universe.

Both modern and timeless, Anne Swan Moore’s magic garden becomes an incandescent icon of the lyricisms of nature, reflecting a contemporary approach of style and technique. Her incandescent paintings result in modern masterpieces that invite the viewer to inhale the divine beauty of nature and exhale its sensations, allowing us to celebrate the joys of our universe. Cultivating a strong reputation in the national art world, her artwork is treasured in prestigious public and private collections. Amsterdam Whitney Gallery is delighted to shine the spotlight on this contemporary star and to showcase her stellar work!



LIFE'S JOURNEY IN PURPLE
Oil and Gold Leaf on Board
24" x 24"

JOHN PETERS

“Art is a journey into a sacred harbor.” Eugene O’Neill proclaimed. Artistically following this path is John Peters, whose compelling new series, “Life’s Journey,” navigates viewers to reflect upon the paths we travel, the experiences that shape us, and the profound beauty found in life’s unfolding narrative. Through expressive chromatic compositions, evocative imagery, and a deeply personal visual language, this gifted artist captures the emotional terrain of the human experience—moments of triumph and loss, discovery and reflection, connection and transformation. Rich in huetopian color, symbolism and atmosphere, the abstract series metaphorically explores themes of perseverance, growth, hope, and the enduring spirit that guides us through life’s many transitions.

Synergetically aligning himself with “Life is a Journey,” this gifted artist captures the emotional terrain of the human experience—moments of triumph and loss, discovery and reflection, connection and transformation. For John Peters, art serves as both a record and a meditation on the passage of time. Each work in Life’s Journey functions as a visual chapter, revealing the milestones, memories, and quiet revelations that define our individual and collective stories. Rich in symbolism and atmosphere, the series explores themes of perseverance, growth, hope, and the enduring spirit that guides us through life’s many transitions.

Drawing inspiration from personal observation as well as universal human experiences, John Peters creates works that resonate on both intimate and expansive levels. Rich color plays a central role in his compositions, where intense blues, radiant golds, vibrant reds, and luminous greens become emotional signifiers, guiding the viewer through a spectrum of feeling and memory. His masterful use of color and form creates works that are both visually captivating and emotionally engaging, inviting contemplation long after the initial viewing, encouraging viewers to pause and contemplate their own journeys—where they have been, where they are, and where they may be headed.

At its heart, Life’s Journey is a celebration of the paths we travel and the stories we carry as he visually reminds us that life is not defined by a single destination but by the countless experiences, relationships, and discoveries encountered along the way. His paintings offer viewers an opportunity to reflect upon their own journeys while finding beauty and meaning in the shared human experience. Neither literal narratives nor fixed destinations, his incandescent art offers open-ended reflections that allow each viewer to find personal meaning within the work, as he embraces the idea that life, like art, is a continual process of becoming—an ever-evolving path marked by curiosity, resilience, and renewal.

Through Life’s Journey, John Peters creates a powerful exhibition that speaks to the enduring spirit of exploration, transformation, and hope. The result is a body of work that is a testament to his powerful art’s ability to illuminate the richness of life’s journey. With Life’s Journey, John Peters presents a moving and insightful body of work that serves as a reminder that every path, regardless of its challenges, contributes to the unique story of a life well lived. The award-winning painter has participated in a lifetime of immersion in the arts, culminating in an outstanding body of work that has elevated him into a meaningful position in the contemporary art arena. Active with the Detroit Institute of Art, Mr. Peters is also a noted author of several art books. This masterful artist has enjoyed numerous successful exhibitions in the U.S., as well as in Europe, and has become a collector favorite in the international art world.



AMERICAN BARN

Oil on Canvas

30" x 40"

SALLY RUDDY

Henry David Thoreau advised us: “All nature is doing her best each moment to make us well. Do not resist her.”

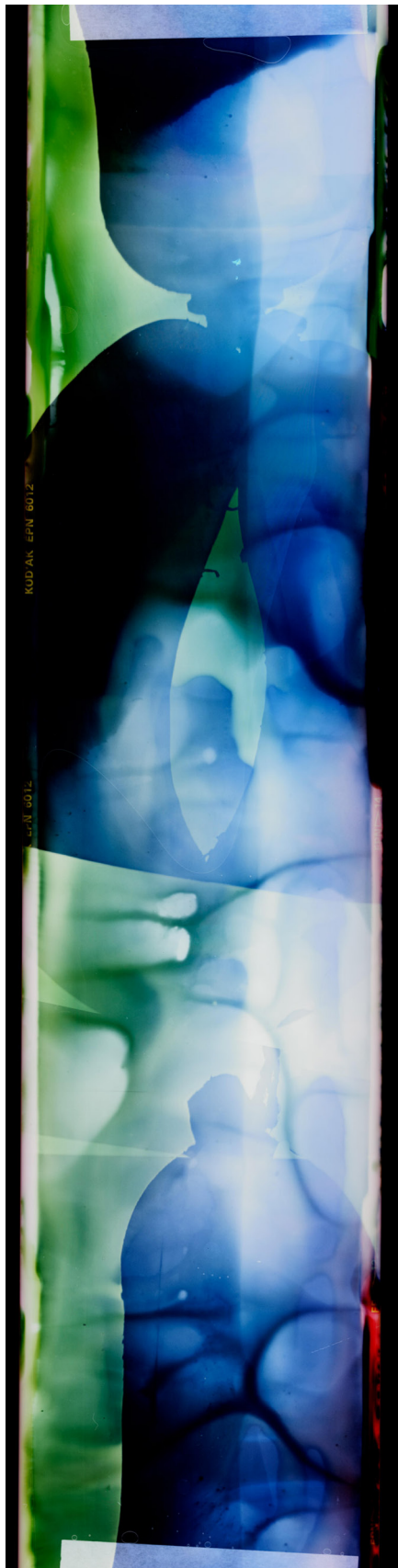
Celebrating nature and the American spirit are the irresistible paintings of Sally Ruddy, whose recent series, “Red-White & Beautiful,” rejoices in the quiet splendor of America’s countryside. Presenting an inspiring collection of nature-infused paintings, her vibrant series, “Red, White & Beautiful,” sparkles with the colors of the American flag, becoming lyrical expressions of the beauty, energy, and resilience found in the natural world. Through dynamic compositions and expressive brushwork, the California-based Sally Ruddy transforms familiar patriotic hues into captivating visual narratives that honor both landscape and spirit.

Drawing inspiration from nature’s endless rhythms, Ms. Ruddy’s chromatic paintings evoke blooming gardens, open skies, flowing water, and the ever-changing light that animates the American environment. Masterfully employing a color wheel of red, white, and blue, she transcends symbolism, becoming a sophisticated exploration of color relationships, movement, and emotional resonance. Rich crimson tones suggest vitality and passion, luminous whites create atmosphere and balance, while deep and brilliant blues evoke serenity, depth, and contemplation.

Rather than presenting literal interpretations of nature, Sally Ruddy treasures its essence—its vitality, beauty, and capacity for renewal. Layered textures and fluid forms invite viewers into immersive landscapes and still lives, where observation coexists with the universe. The paintings rejoice in both the grandeur and intimacy of the natural world while reflecting themes of freedom, optimism, and connection. Rooted in a profound appreciation for the environment and its ability to inspire reflection and joy, her works encourage viewers to pause and experience the restorative power of nature through color, gesture, and light. The resulting paintings are at once patriotic and universal, honoring the American landscape while speaking to broader themes of beauty, hope, and human experience.

In her “Red, White & Beautiful” paintings, Sally Ruddy offers a 5-Salute to America’s 250th Anniversary, offering glowing Star Spangled Wishes to nature. Visually personifying the song, “This land is your land, this land is my land,” her compelling visual journey unites the splendor of nature with the emotional power of color. Through her expressive and luminous paintings, she reminds us that both art and nature possess a unique ability to uplift the spirit, inspire wonder, and celebrate the enduring beauty that surrounds us.

Artistically aligned with our nation’s 250th Anniversary, Sally Ruddy creates a patriotic, expressive, expansive body of work that encapsulates the quiet beauty of the American landscape and the spiritual power of the land. By honoring nature and the U.S., this highly acclaimed, internationally award-winning artist has participated in a lifetime of immersion in the arts, culminating in a wonderful body of work. Catapulted to a renowned position in the contemporary art arena, she has enjoyed numerous successful exhibitions throughout California, Nevada, Europe, including London, Paris, Belgium, and Italy, and the U.S. The presence of her works in prestigious collections across the world is an affirmation of her continually expanding reputation.



NEAR -- BLOOD MEETS LIVER," SMUT Series. Photogram
Hahnemühle Baryta Paper
61 cm x 220 cm, 24 in x 86.6 in

BERNHARD SCHMIDT

Ansel Adams famously observed, “You don’t take a photograph, you make it.” Echoing this sentiment are the Photograms of Bernhard Schmidt, where each “Photogram” image is not merely captured but carefully constructed to be an emotional and conceptual experience. Based in Munich, Germany, Bernhard Schmidt’s compelling *Smut* and *Forbidden Fruit* photographic series pushes the boundaries of contemporary photography by transforming the language of abstraction into a charged visual dialogue on desire, perception, and the allure of the forbidden. With the belief that photography, at its most provocative, reveals not only what is visible, but what lingers beneath perception, he encourages the viewer to look beyond the surface—to experience rather than to define.

Luminously exploring form, shadow, and the unseen, Bernhard Schmidt’s Photograms reimagine one of photography’s most elemental processes. Working without a camera, he creates evocative photograms—images formed through the direct interaction of light, objects, and photosensitive surfaces—resulting in compositions that are at once minimal and profoundly expressive.

By manipulating exposure, layering, and spatial relationships, he constructs compositions that feel at once deliberate and serendipitous. Light becomes both medium and subject, revealing what is typically overlooked. In this way, his “makes” his work

With a masterful command of form, light, and texture, Bernhard Schmidt reimagines photography as a sensory experience rather than a purely representational medium. In his *Smut* series, surfaces dissolve into ambiguous fields of shadow and luminosity, where suggestion replaces certainty. Oscillating between concealment and revelation, he invites viewers into a space where meaning is fluid and interpretation is deeply personal. Distinguished by his nuanced use of light and a deep sensitivity to atmosphere, his images transcend documentation and enter the realm of visual meditation. Each photograph becomes a carefully orchestrated encounter between presence and absence, clarity and ambiguity.

Working with a keen eye for structure and balance, Bernhard Schmidt’s *Forbidden Fruit* series transforms ordinary scenes into evocative narratives. His work often explores themes of transience, memory, and perception, encouraging the viewer to engage not only with what is seen, but with what is felt. In an era saturated with imagery, his photographs stand apart through their restraint, elegance, and contemplative depth.

Resisting literal narrative, Bernhard Schmidt’s photograms instead offer an immersive encounter with emotion and instinct. Simultaneously intimate and distant, his oeuvre acts as a visual metaphor, challenging the viewer to confront the boundaries between the seen and the sensed. In an image-saturated age, his restrained yet daring aesthetic stands as a meditation on the power of ambiguity.



LEAVING YOUR MARK OR STAIN
Oil on canvas w/ Braided Rug and Clock
H 66" X W 30

TOM SCHNEIDER

Galvanized by Lucien Freud's statement: "What I want to express is the humanity of the body," New York figurative artist Tom Schneider's male figurative subjects probe the deep heart's core with a visceral metaphorical message, voicing universal themes of terror, redemption, and the mysteries of eternity and fate. Creating a visual narrative resonating with an allegorical representation of societal issues, Mr. Schneider incorporates three-dimensional modeling alongside expressionistic, figurative, and abstract elements. Stunning in both visual form and symbolic importance, his powerful gestural compositions reverberate with societal significance, delving beyond the surface representations of his subjects to reveal with luminous introspection, the weakness of humankind and the dark undercurrents of emotion. With a timeless gravitas that resonates with the complexities of modern existences, his canvases become arenas of tension and harmony, where abstraction and representation coalesce into a combustible visual equilibrium.

Suspended between stillness and psychological revelation, his subjects inhabit a space where flesh becomes a record of time, vulnerability, and quiet confrontation. Each gesture, each contour, resists superficial narrative, inviting the viewer into an intimate, almost disquieting proximity. Departing from traditional stretched canvases by hanging multiple large-scale canvases directly onto the wall, the canvases to touch the floor, directly interacting with viewers by occupying and sharing their space. Bridging traditional and modern art movements, Tom Schneider fuses religious iconography, mysticism, and modern-day symbolism into his figures, where emblematic transfigurations of satanic imagery clash with childhood innocence, metamorphosing to become a visionary syntax. Projecting a strong, immediate physicality of movement, he imbues each figure with an ambiance of vibrating energy, bringing each subject alive in a distinctive way, expanding this archetype into an artistic parable of contemporary humanity, revealing a powerful psychological landscape.

With rich, textured strokes, he explores facets of humanity, and the result becomes a meaningful interpretation of the human condition, capturing the passage of life. With each sensitively painted figure, Tom Schneider reflects on aspects of humanity, such as innocence and beauty or longing and fear. The contemplative nature of his subjects and his expressive use of color, texture, and text communicate the complexity of human emotion. Reverberating with movement and light, this gifted artist's compelling canvases of male nudes dominate the canvas with powerfully rendered hues. Expressively colored, his explosive paintings ignite visceral emotions in which bodies are contorted into a wide range of positions, pulling each image into an enigmatic, dreamlike world.

Complex and sophisticated, Tom Schneider's sublime tableau is an insightful amalgamation of gestural, figurative art that redefines the male human form, as each composition unfolds as a dynamic meditation on vulnerability, identity, and the fleeting nature of presence, positioning the figure as both subject and symbol. Challenging viewers to go beyond the physical self to the realm of the spirit, his oeuvre is a conduit that evocatively transcends traditional figuration. By adroitly rendering the human presence not as static anatomy, but as a living, breathing conduit of emotion, memory, and existential inquiry, his figures emerge from layered surfaces with an almost spectral vitality—simultaneously grounded and ethereal—inviting viewers into a deeply intimate dialogue. Beguilingly bold, with dazzling explosions of vitality, his highly emotive canvases mesmerize and affirm his place within a vital continuum of figurative painters who challenge and expand the language of the human form. Collectors and connoisseurs will recognize in his work a rare synthesis of technical mastery and conceptual depth—hallmarks of museum-caliber artistry.



TEXTURED PULSE
Acrylic on Canvas
48" x 36"

SHERRY SHEFTS

“Art is everywhere, except it has to pass through a creative mind,” declared Louise Nevelson. Contemporary Arizona artist Sherry Shefts’ abstract expressionist paintings reflect how such a creative mind can interpret the world and transmute it into masterful works of art. By creating a universe of her own, Ms. Shefts fuses the visual vocabularies of abstraction, drawing inspiration from life and dreams. Breathtakingly imaginative, each canvas reveals a powerful, expressive vision, resonating with a distinctive, dreamlike aura. Ethereal brushstrokes evoke a vista reflecting a vortex of emotions, as she captures inner and outer horizons, each composition transmitting a celestial feeling of wonderment.

Speaking in languages both iconographic and purely visual, the centrifugal force of Sherry Shefts’ visceral compositions swirl around her innate ability to externalize her internal world and inner emotions, which mirror visions of the innermost syntax of the human soul. The amalgamation of these diverse artistic traditions explodes as a metaphor for the complexities of cross-cultural life’s experiences as she invites viewers to celebrate her unique vision. Visually arresting and highly original, her visceral compositions express her thoughts on the universe.

Employing a subdued color palette, featuring muted colors and an indefinable treatment of space, her dazzling paintings are masterpieces of tranquility and peace. Expertly balancing color tonality with textured shapes, her imaginative oeuvre produces dreamlike imagery that seems to sprout from the canvas, where color serves not merely as an aesthetic element but as a conduit for emotion, memory, and spiritual connection. Pulsating with energy, revealing a sophisticated interplay of rhythm, texture, and luminous hues that engage both the eye and the psyche, her paintings are a portal to a cerebral vision, giving tangibility to thoughts and ideas. Providing an intimate *tete-a-tete* with the inner workings of her creative heart and soul, the external world assumes the contours of a dream, and the strength of her work encourages us to dream with her.

Saturated with creativity and radiating emotion, Sherry Shefts’ unique paintings exude a strategic synthesis of dazzling energy as the eye is guided to a gravitational force that draws attention to the ocular exuberant space. Initiating a visual dialogue with the viewer on a transcendental level of perception and experience, softer lines and shapes constitute the background, which contributes to a mysterious element to the action in the foreground. Rather than depicting the visible world, she manifests the unseen dimensions of experience—joy, contemplation, resilience, and wonder. Her masterful paintings become spaces of reflection where emotion and imagination converge, offering a deeply personal encounter with the transformative power of art.

Powerful and joyous, Sherry Shefts’s oeuvre is a beautiful intermix of nature transmuted into the color and texture of dreams. World-wide celebrated and collected, her modern masterpieces have been showcased in major global exhibitions in Europe and on the West Coast, catapulting her fame to international stature. The Amsterdam Whitney Gallery is proud and overjoyed to shine the spotlight on this rising star!



VANTAGE POINT
Acrylic on Canvas
36" x 48"

CAMPBELL AVERY SMITH

Henri Matisse observed, “With color one obtains an energy that seems to stem from witchcraft.” This sentiment resonates profoundly within the magical, colorful paintings of Campbell Avery Smith’s luminous canvases, which transform the landscapes of Florida into poetic meditations on light, atmosphere, and emotion. Beguilingly creating a spellbinding body of work that celebrates the emotional poetry of nature through radiant color, expressive movement, and atmospheric composition, his artistic vision comes to a crescendo through the mystic realm of color. Richly vibrating in form and hue, his subliminally virtuosic oeuvre reflects an unmistakable joie de vivre where color dynamically interacts on the canvas.

Rooted in a profound connection to the natural world, Campbell Avery Smith’s paintings evoke the serenity of coastal horizons, tropical shores, shifting skies, and the quiet rhythms of the landscape that surrounds daily life in the American South. Drawing inspiration from Florida’s lush terrain and crystalline light, Mr. Smith transforms familiar scenery into immersive visual experiences imbued with elegance, warmth, and contemplative beauty. Through layered textures and harmonious palettes, the artist captures fleeting moments of sunlight dancing across water, the organic cadence of native flora, and the transcendent calm found within nature’s expansive spaces.

The influence of Florida’s unique environment is central to Campbell Smith’s artistic vision. From coastal panoramas to subtropical gardens, the artist channels the region’s natural splendor into compositions that celebrate light, atmosphere, and the restorative power of the outdoors. Painting a paradise on earth, Campbell Avery Smith enshrines that which is beautiful and skillfully balances this narrative with a superb formal technique utilizing a brilliant color palette. A dazzling kaleidoscopic color wheel of sun-kissed hues implodes with punches of warm blue, verdant green, and sun-dappled pinks, adding depth and movement to the striking vistas. Colors burst forth from the canvas with an explosive and effervescent charm as these environs dazzle the eye. A tantalizing interplay of light and shadow radiates the sun-kissed scenes, imbuing his joyful paintings with ambrosial effects, as his efflorescent panoramas are a reaffirmation of the aesthetic joys of the outdoors, providing serenity and harmony with our universe.

Echoing the traditions of modern colorists while maintaining a distinctly contemporary sensibility, his lyrical works resonate with a refined balance of vitality and tranquility. Award-winning artist Campbell Avery Smith works and resides in Florida and exhibits nationally and internationally, with group and solo exhibitions throughout Europe, the United States, including Florida and New York. Treasured in public and private collections around the world, cultivating a compelling visual dialogue between landscape, memory, and emotion, his work offers collectors and viewers an evocative journey through color, nature, and the enduring spirit of place.



RETURN TO CRETE

Acrylic on Canvas

24" x 36"

KATHY STANLEY

Judy Chicago stated, “I am trying to make art that relates to the deepest and most mythic concerns of humankind, and I believe that, at this moment of history, feminism is humanism.” Championing women, Kathy Stanley’s female-centric oeuvre is an artistic exploration of women’s relationship to nature. Celebrating images of the female intermingled within a mystical environment Kathy Stanley’s female figures take on a monumental quality, radiating power and divinity. Celestially dramatic, her atmospheric “she-oes” on earth are galvanized by a syncopated artistic language that allows her creative lexicon to interweave the emotional impact of the human experience. Aesthetically captivating and emotionally uplifting, her dazzling visual syntax reverberates with a rich tapestry of the wonders of the power of women.

Also incorporating landscape paintings into her celestial oeuvre, Ms. Stanley shines a spotlight on the beauty and joy of nature.

With the belief that there is a seismic change occurring in the status of women in Western and other societies worldwide, Kathy Stanley is convinced that the artist can play an important role in furthering this historical transformation. Emphasizing the primal relationship of women and nature, she adroitly blends figures into the background and places them as the central focus of the composition. Exploring woman’s primal roots, her ability to birth, and her goddess-based spirituality, the compositional narratives are inspired by a chronology of art history and female mythology and prowess.

Accentuating a joyful connection with the inner feminine essence and the earth, Kathy Stanley states: “In my graduate studies in women’s spirituality, I began to see how archetypal images of the sacred feminine were emerging on the canvas. The inner journey of painting and the act of creating a painting through sacred ceremony and ritual is like a pilgrimage to meet some aspect of myself that is in turn healing and deeply satisfying. My experience is that painting is a healing tonic and a journey towards wholeness and inner aliveness.”

Drawing on the energy of the universe and focusing her tableaux on the dynamic connection between femininity and nature, Ms. Stanley states that she wishes “to build a sacred relationship with the earth and to have strategies to build hope, resilience, joy and create a vision for the world they want to see.” By providing a sensorial experience with her women-based oeuvre, she synthesizes a visual sensation, rendering her female figures in divine and organic backgrounds which serve as a metaphor for womankind. Adroitly infusing a spiritual quality to the female form, she portrays the female as always strong, confident, and never shown as weak. Through the inherent strength of women, she believes that women see themselves as leaders and workers capable of changing the direction of the world.

Pulsating with humanity, combined with the quality of spirituality, gender is integral to her feminist narrative. Finding inspiration from the power and beauty of the feminine mystique, Kathy Stanley provides a dynamic artistic voice to “she-oes.” Jamaican born and residing on the West Coast, Kathy Stanley exhibited on the West Coast and has taught classes in ecopsychology and spiritual ecology. Currently teaching in the School of Undergraduate Studies at the California Institute of Integral Studies, her art has been featured in prestigious publications such as: House and Garden Magazine, The World of Interiors Magazine and Condé Nast Traveler Magazine. Internationally collected in both public and private collections, her art is globally treasured on many continents and Amsterdam Whitney Gallery is proud to showcase this Global Art Star!



GARDEN DIARY 6

Oil on Linen

23.62" x 31.5"

LIHONG ZHANG

Monet opined: “Try to forget what objects you have before you- a tree, a house, a field, or whatever, merely think-Here is a little square of blue, here an oblong of pink, here a streak of yellow, and paint it just as it looks to you, the exact color and shape, until it gives you your own impression of the scene before you.”

Impressed by this observation is Asian Australian artist Lihong Zhang, whose luminous landscapes and exquisite floral compositions celebrate the enduring beauty, vitality, and spiritual resonance of the natural world. Through a masterful balance of color, light, and expressive brushwork, Ms. Zhang transforms familiar scenes into personal, poetic meditations that invite viewers to reconnect with nature’s quiet wonders.

Drawing inspiration from the splendor of flowers in bloom, tranquil waterways, and expansive landscapes, Lihong Zhang creates unique works that transcend mere representation. Capturing the fleeting moments when sunlight dances across petals, reflections shimmer upon water, and nature reveals its profound capacity to inspire contemplation and renewal, her richly layered canvases ripple with color and atmosphere. Each composition evokes an artistic vision replete with a sense of harmony between the external landscape and the viewer’s inner emotional world.

Flowers emerge as powerful symbols throughout Lihong Zhang’s work, expressing themes of growth, resilience, beauty, and transformation. Whether depicting delicate lotus blossoms, vibrant garden florals, or lush natural settings, the artist imbues each subject with a delicate sense of vitality and grace. Further extending this visual language are her luminescent landscapes, which offer serene vistas that celebrate the interconnectedness of earth and sky. Kissed by the sun and embraced by the earth, her oeuvre reflects a deep appreciation for nature’s restorative power.

Through her sensitive use of color, texture, and composition, she adroitly portrays immersive environments that encourage viewers to pause, reflect, and experience a renewed sense of wonder, serving as reminders of the beauty that surrounds us and the enduring relationship between humanity and the natural world. With their radiant palettes and evocative imagery, Lihong Zhang’s floral and landscape paintings offer a compelling visual journey into nature’s timeless elegance as they celebrate both the grandeur and intimacy of the natural environment, revealing the profound beauty that can be found in every blossom, horizon, and changing season.

Internationally recognized, Lihong Zhang’s masterful floral and landscape oil paintings have catapulted her to global status, becoming one of the most celebrated nature artists. Brilliantly translating onto canvas with a syncopated beat the magnificence of nature, the award-winning artist Lihong Zhang has enjoyed great worldwide success, exhibiting in solo and group exhibitions throughout Europe, Asia, and the United States. Treasured in both public and private collections, Amsterdam Whitney Gallery is proud to showcase the art of this natural star!

CHELSEA CURATORS' CHOICE

June 6th to August 31st, 2026

NANCY BALMERT's radiant landscape and floral paintings extraordinarily embody the timeless connection between art and the natural world through luminous color, exquisite detail, and masterful technique, with oil canvases that transform the natural world into powerful expressions of beauty, vitality, and wonder, manifesting an aesthetic affirmation that art and nature are inseparable. Incandescently reminding us that nature remains one of humanity's greatest sources of inspiration, "The Ambassador to Nature's" masterpieces offer moments of magic, serenity, and transcendence, inviting us to appreciate and reconnect with the rhythm of the natural world.

DONNA CARNAHAN presents a captivating series of Italian landscape photography that transports the viewer into the poetic heart of Italy. Through evocative visual language, she captures the quiet majesty of rolling hills, sun-drenched villages, and shimmering coastal horizons, offering optical visual narratives infused with romance, history, and reverence for place and time, as each illuminated landscape is steeped in cultural memory.

BARBARA CHRISTOL's clever "Little French Story" innovatively presents twelve minimalist non-objective paintings that conceptualize iconic French words, each word symbolizing famous lexicons from the French language. Aligning her oeuvre within a visual lineage that merges abstraction with semiotics, where letters, forms, and colors operate as a visual language, she poetically transforms language into a charming, witty visual experience.

MERRILL FRENCH's iconic cityscape paintings offer a unique perspective and an enchanting vision of the emblematic images of New York City, infusing them with a pulsating new life and fresh artistic vision. With New York City as her artistic muse, she immortalizes familiar streets, skylines, and metropolitan moments into evocative visual experiences that transcend place to become reflections of memory, movement, and modern living.

FRANK HOEFFLER's kaleidoscopic abstract expressionist compositions explore the visceral intricacies of human existence by examining the emotional organic terrain of the immediate. Pivoting the most profound insights into dazzling non-objective panoramas that are ablaze with emotion and intellect, he adroitly conveys the duality of the mind and the heart, presenting a fragmented fusion of life.

MARK JACOBSON's powerful landscape paintings celebrate the majesty of nature, portraying the drama inherent in monumental panoramas and vistas. By creating contemporary versions of classic romantic landscapes, Dr Jacobson pays homage to the magnificence of the natural world. Lyrically reflecting his visceral response to the terrain, he invites us on a sensorial experience with Mother Nature as he illustrates the sublime grandeur of nature

JACK JASPER creates a fulcrum of fantasia with an alternative visual universe on canvas, reflecting a soft, subdued pastel palette that reveals semi-figurative abstracted forms that are often based on Greek mythology as they co-exist in a chimerical parallel realm. Resonating with beauty and creativity, his parallax universe symbolically illustrates the dynamism of life and the duality of the mind and the synergy of the heart.

NERYS LEVY's environmentally themed art is evergreen and ever-fabulous as she gracefully responds to the gift of nature by illustrating the beauty of our environment, which visually inspires us to treasure our ecosystem and to respectfully preserve its infinite intricacies, while recognizing the wonders that are hidden in the terrain. Awakened a spirit of guardianship of our imperiled planet, her aesthetic narrative urges her audience to honor our delicate planet.

SUBODH MAHESHWARI's celestial huetopian canvases exemplify her passion for the natural world, offering a new vision of the magic and allure of the universe, rendering international themes of love and peace which resonate with a dazzling array of luminescent colors. Artfully eloquent, her ravishing paintings exude radiant light and luscious color, with rainbows of hues bursting from the canvas. With sensitivity and exuberance, Subodh's prismatic portals communicate that nature is paramount to the universe.

CHELSEA CURATORS' CHOICE

June 6th to August 31st, 2026

ANNE SWAN MOORE's lyrical nature-inspired garden series incandescently explores the sensorial legacy of nature, continuing humankind's profound quest to find beauty in our natural terrain as she polychromatically encapsulates the enchantment of the flora and fauna realm with illuminated reveries that optically showcase the joyful visions of earthly delight that emphasize humanity's inter-connection with the terrestrial realm.

JOHN PETERS' compelling new series, "Life's Journey," invites us to reflect upon the paths we travel, the experiences that shape us, and the profound beauty found in life's unfolding narrative. Through expressive compositions, evocative imagery, and a deeply personal visual language, this gifted artist captures the emotional terrain of the human experience—moments of triumph and loss, discovery and reflection, connection and transformation. Rich in huetopian color, symbolism, and atmosphere, the abstract series metaphorically explores themes of perseverance, growth, hope, and the enduring spirit that guides us through life's many transitions.

SALLY RUDDY's "Red-White & Beautiful," series rejoices in the quiet splendor of America's countryside, as she presents an inspiring collection of nature-infused paintings that sparkle with the colors of the American flag, becoming lyrical expressions of the beauty, energy, and resilience found in the natural world. Through dynamic compositions and expressive brushwork, she transforms familiar patriotic hues into captivating visual narratives that honor both landscape and spirit.

BERNHARD SCHMIDT'S "Photogram" Smut and Forbidden Fruit photographic series pushes the boundaries of contemporary photography by transforming the language of abstraction into a charged visual dialogue on desire, perception, and the allure of the forbidden. With the belief that photography, at its most provocative, reveals not only what is visible, but what lingers beneath perception, he encourages the viewer to look beyond the surface—to experience rather than to define.


TOM SCHNEIDER's visceral figurative work is suspended between stillness and psychological revelation, with subjects inhabiting a space where flesh becomes a record of time, vulnerability, and quiet confrontation. Each gesture, each contour, and each word resists superficial narrative, instead inviting the viewer to probe into an intimate, almost disquieting proximity and to question past occurrences.

SHERRY SHEFTS' abstract expressionist oeuvre distills visual experience into something more essential—an evocative, non-objective language that speaks not only to the eye, but also to memory, emotion, and the unseen rhythms of life. Through sweeping brushstrokes and nuanced, subdued tonal shifts, her abstract paintings construct an immersive visual environment that invites contemplation rather than demanding interpretation.

CAMPBELL AVERY SMITH luminously transforms the landscapes of Florida into subliminal meditations on light, atmosphere, and emotion. Beguilingly creating a spellbinding body of work that celebrates the emotional poetry of nature through radiant color, expressive movement, and atmospheric composition, his artistic vision comes to a crescendo through the mystic realm of color. Richly vibrating in form and hue, his dazzling virtuosic oeuvre reflects an unmistakable joie de vivre where color dynamically interacts on the canvas.

KATHY STANLEY's female-centric oeuvre champions women as she explores women's relationship to nature, celebrating "she-roes" on earth who radiate power, strength, and divinity, adroitly illustrating the feminine form as strong, resilient, and spiritual, while radiating the power of the organic universe. Rejoicing in the natural beauty of life and the terrain, she summons us to join in the joyful aesthetic dance of life.

LIHONG ZHANG's ethereal landscape and celestial floral compositions share a co-relationship with Mother Nature as she masterfully intermingles East and West, culminating in a romantic sensitivity to the natural terrain. Poetically reflecting her fascination with the terrestrial realm, her canvases become a rendezvous with the universe, emphasizing the fragility and intensity humanity shares with the terrestrial world.


Amsterdam Whitney Gallery
 "CHELSEA CURATORS' CHOICE"
 June 6 - August 31, 2026

NANCY BALMERT
 DONNA CARNAHAN
 BARBARA CHRISTOL
 MERRILL FRENCH
 FRANK HOFFLER
 MARK JACOBSON
 JACK JASPER
 NERYS LEVY
 SUBODH MAHESHWARI

ANNE SWAN MOORE
 JOHN PETERS
 SALLY RUDDY
 BERNHARD SCHMIDT
 TOM SCHNEIDER
 SHERRY SHEFTS
 CAMPBELL AVERY SMITH
 KATHY STANLEY
 LIHONG ZHANG

CHELSEA CURATORS' CHOICE

June 6th to August 31st, 2026

AMSTERDAM WHITNEY GALLERY, located at
 210 Eleventh Avenue (between 24th & 25th Streets)
 Chelsea, New York City, 10001
amsterdamwhitneygallery.com
amsterdamwhitney@aol.com
 (212) 255 9050