

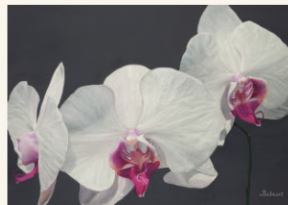


Amsterdam Whitney Gallery Chelsea Biennale

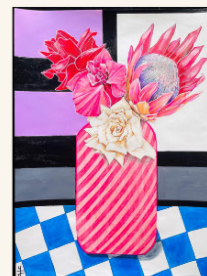
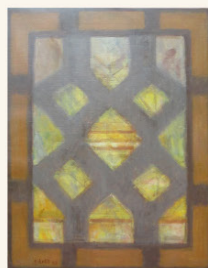
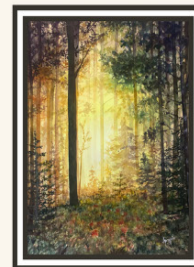


October 8th to December 2022

"La Dolce Vita" Soiree
Saturday, October 8, 2022 from 2:00 to 4:00 p.m.
Visitors are required to wear a mask.



Misa Aihara
Tom Ashbourne
Nancy Balmert
Barbara Donovan
Torhild Froydis Eid
Frank Hoeffler
Aprajita Lal
Thomas Lockhart
Jack Jasper
Lori Mole
Yuji Mostafavee
John Peters
Steffi Rodigas
Sally Ruddy
Yoichiro Sakai
Irene Van Celestine
Lulu Zheng





Verko 19-20-5
Oil on Canvas
26.7" x 28.3"

MISA AIHARA

Paying tribute to Helen Frankenthaler who stated: "Every canvas is a journey all its own," Misa Aihara's vibrant abstract "Verko" series navigates the viewer to an uncharted spectral realm. Rooted in abstraction, the Japanese based artist charts a deconstructed visual map which explores the human interconnection to her art through the employment of color, light and shapes. With her visual GPS, she unearths bold black lines juxtaposed against brilliant splashes of color resulting in dynamic organic forms. A beacon of artistic light, Misa Aihara captures the metaphorical shapes and forces of our world within her personal vision.

Following an inner quest which allows artistic expression to search for freedom, Misa Aihara transforms her sensorial artistic zone to reflect her inner painterly journey. Transcending emotional boundaries to reach a universal language, her artistic path forges into a profound investigation into the inner soul. As she amalgamates the painted layers to become a sophisticated, symbolic visual vortex of life, she balances her visual radar zone. Her masterful abstract "Verko" oeuvre highlights forms, colors, and shapes to mirror the volatile concepts of our ever-expanding contemporary universe. Rendering the formal aspects of an artistic language through the alchemy of hue and shape, her canvases offer a private rendezvous with abstraction.

Creative and ingenious, her abstract series "Verko," showcases a non-objective homage to a pre-verbal universe where the forces of color and light overflow magically to accomplish visually complex and highly textured compositions. Misa Aihara explains: "I explore with every kind of abstract and pictorial element. I want to give an emotional and spiritual impact to form a composition of the elements. I want to invite the viewer to an exploration of deeper dimensions of consciousness."

Transposing visceral expressions into exuberant color values and textured forms, her highly personalized paintings reflect an electrifying intensity. An exceptional and enticing universe is revealed in her intrepid figureless art where fluid brio forms synthesize into expressive color values. A master at color theory, her painterly brushstrokes synthesize and draw the viewer into the dimensional depths of the canvas. Saturated pools of vibrant hues transport outwards reaching the limits of the composition as her urbane, polychromatic works visually mimic the organic energy of pulsating forms. With elan, undulating black lines create dynamic movement echoing the rambunctious vibrations of life itself. The psychological impact of exhilarated color is an integral concept for spiritual contemplation, thus allowing an invisible mystical feeling to emanate from within.

Sophisticated in execution and stunning in effect, Misa Aihara's globally acclaimed artwork has catapulted her to national and international recognition. Award-winning painter Misa Aihara has exhibited extensively throughout Asia, Europe, and the U.S., receiving numerous accolades for her artwork. Her paintings are held in several international collections throughout the world. Amsterdam Whitney Gallery is proud to shine the spotlight on this contemporary star.



Infinity Stone
Translucent White Alabaster, Gold Gilt, Granite Base
17" x 10"

TOM ASHBOURNE

Constantin Brancusi observed: "That which they call abstract is the most realistic, because what is real is not the exterior but the idea, the essence of things." Aligned to this theory is Canadian sculptor Tom Ashbourne, SSC, SCA, OSA, who unites a harmonious abstract combination to reveal the invisible within the visible. Infused by reason and gifted artistic skills, his quest is to find the inner essence of his carved subject matter. Inspired by harmony, balance and rhythm, Tom Ashbourne states: "I naturally think in 3-D, I see things in the raw stone and find the best way to bring them to life. I continually assess the sculpture, working on each side with equal intensity. I want each side of the sculpture to draw people's interest, over and over." Defining the essence of humankind in the three-dimensional format, his sculptures manifest the harmonious relationships of three forces- color, volume, and shape as he synthesizes a distinct sculptural language.

Through abstract reductivity and simplified lines, he masterfully straddles the boundaries between fantasy and reality. Stripping the subject of decorative elements, a raw honesty emerges, and the psychological makeup of each carved form is revealed. By removing superfluous detail, he reveals the stone's pure essence, as he adroitly creates tangible assemblage colored-stone sculptures which are an optical mix of form and harmony.

Various hues of colored alabaster are employed as a visual counterpoint which aids in achieving the significance of the deep inner core of his compositions. Demonstrating an unmatched technical ability and an exceptional creative spirit, Mr. Ashbourne deftly breathes life into his subjects, revealing abstracted forms that seem poised to step off their bases. Imbued with the irrepressible energy of matter as well as the duality between heaviness and lightness of form, his oeuvre explores the material and visceral shaping of abstracted forms.

Provocatively exciting and bursting with exuberance, these compelling sculptures are layered to create narratives of humanity, all siphoned through a nuanced and adroit sculpting hand. Carved with emotional clarity, Tom Ashbourne captures the subconscious of the human soul. Fully visualizing through careful simplification of form, he demonstrates that even an unadulterated object can reveal a visceral state of being. The artist explains: "My sculptures are an expression of my life and artistic experiences and are an extension of my knowledge about what transforms a sculpture into a successful artistic statement."

Modern yet timeless, elegant, and sophisticated, Tom Ashbourne's sculptures successfully communicate an exciting three-dimensional essence of aesthetic form, space, and texture. His unique artistic vision results in a contemporary sculptural lexicon which is manifested through salient angles and geometric forms which twist and curl, creating a tension between surface and reality. Providing an inward look to humanity, these free-flowing sculptures intermingle diverse image variations, accentuating the chasm between what is internal and external. Achieving an abstracted sculptural sanctity of unity and harmony, Tom Ashbourne has been globally exhibited in both private collections and public collections worldwide. Continually expanding his reputation as an international master sculptor, Amsterdam Whitney Gallery is proud to shine the spotlight on this cosmopolitan art star!



Oriental Orchids I
Oil on Canvas
12" x 16"

NANCY BALMERT

“Many eyes go through the meadow, but few see the flowers in it,” observed Ralph Waldo Emerson. Optically prioritizing the floral kingdom as a central vision for her oeuvre, Texas and Washington artist, Nancy Balmert, “Queen of the Flowers,” reigns over her floral-centric queendom with beauty and grace. Her efflorescent compositions embody how the language of flowers also emblemize the language of the soul. Visually expressing a deep bio-dynamic matrix to the terrain, her oil on canvas compositions are waltzes of nature’s polychromatic magic which dance through her canvas. A pivotal presence is her supreme ability to re-birth each flower to metamorphose into a hyper-realistic living organism, macro-managing it to come alive and bloom on canvas.

Romancing the Flower is the leitmotif theme of Nancy Balmert’s floral kingdom as she continues her on-going love affair with Mother Nature. Also known as “The Yellow Rose of Texas,” her co-relationship with the environment serves as the loving inspiration for her illuminated floral dioramas which capture the harmonious relationship of the land. Not only having a romance with nature, Nancy Balmert and her devoted husband Paul, stroll through European and U.S. gardens where she photographs nature in order to memorialize local flora and seize the perfect flower in bloom. This floral odyssey rendezvous blossoms into a visual remembrance reflecting a cadence of chromatic flowers which celebrate the beauty of these botanical environments. Inviting the viewer to inhale the beauty of nature and to exhale its joy, she sensorially embraces the unique personality and identity of each flower, focusing intently on the distinguished details of each floret. With an unapologetic indulgence for the visual senses, she not only unearths the immersive moment but also the visual image itself, encapsulating the sensations, memories, and emotions elicited in our response to the terrain. Rooted in a pivotal point of action, she illustrates an enlarging burgeoning flower bud, or encapsulates the miraculous moment a ray of light bursts through a petal.

Creating a kinetic immersion into a sensorial world of color of her flora-centric realm, an apogee of luminous hues blossom from Nancy Balmert’s exhilarated color wheel. The artist’s pictorial universe becomes an ode to the optical pleasure of the environment reflecting a symbiotic perception of tones which flow through dense layers of paint and texture. Parallel to the color arrangement is the evolving density texture, revealing multiple impasto layers of paint which become softly blended edges, for which she is acclaimed. Veins of a leaf and petals from a flower are metaphorically mirrored to meticulously reflect the beauty of the universe. Unearthing the full spectrum of a flowery garden or the wonderment of an effervescent park, Nancy Balmert’s eye and canvas calibrate the transitory moments and florification of the organic world. Through the synergy of her compositions, she artistically embraces the unique personality and identity of each flower as she visually re-contextualizes the wonder of nature. Timeless, eternal, and frozen in time, her master works immortalize the treasures of the environment, cajoling us to stop to smell the roses.

Maintaining her signature neo-realistic enlarged flowers with their magnified up-close, frontal presentation, the viewer is offered a new visual GPS in which to observe the exquisite, softly blended edges and gradient tonalities. Her polychromatic oeuvre shines the spotlight on the rich imagery of the natural terrain which becomes a prismatic portal to the world. Romanticized through luscious, generous strokes of the brush, thick layers of paint intermingle with bold lines, all becoming her personal imprimatur. The pageantry of hues, shapes and patches of light captivate the imagination and synopsise environmental influences.

NANCY BALMERT

Calling to mind the perfection of the golden age of 17th century Dutch Masters, effusions of radiant light illuminate her floral as well as her incandescent still life oil canvases. This dramatic lighting allows each flower or crystal glass to become dynamic, expressive, and electrifyingly lifelike.

Celebrating the glorious beauty of nature, Nancy Balmert enhances and counterbalances the sublimity of the natural world to reflect her unique artistic vision. Unrivaled and unmatched in achieving global fame in the international art world, internationally celebrated Nancy Balmert exemplifies an art-forward renaissance woman with multi-faceted artistic talents. Nancy and her husband, Paul, travel the globe in search of the perfect flower in its richest bloom. Also painting in Seattle, Washington as well as in Texas, the internationalist, Nancy Balmert, has cultivated a strong reputation in the international art world. Globally awarded for her world-renowned floral paintings, in 2018, Ms. Balmert received numerous international awards including: The International Prize Leonardo Da Vinci, in Florence, Italy, and in March, the International Prize of Nations Tribute to Tiziano in Venice, Italy. In 2018, she was awarded the International Prize Raffaello in Bologna, Italy. Moreover, she was honored in Rome, where she received both the International Prize Giulio Cesare and I Segnlati award. Continuing this path of success, in 2018, she was honored in Bruges with the International Biennial Prize of Flanders. Furthermore, in 2018, inside the Litta Theater in Milano, Ms. Balmert received the International Prize Caravaggio –a Great Master of Art International award. Highlighted in both books: The Best Modern and Contemporary Artists 2018, as well as in Contemporary Art Curator Magazine, she was chosen as one of the 100 Artists of the Future, and was showcased in the 2019 art book 100 Artists of the Future. Continuing this success trajectory, in 2019, Ms. Balmert was awarded the International Prize Botticello, at the Borghese Palace in Florence, Italy. The accolades continue as she was crowned with the International Prize Diego Velazquez, at the Barcelona, Spain European Museum of Modern Art. Honored in 2019, this cosmopolite was awarded with the 2019 International Prize Artist of the Year, in Mantua, Italy, by nine European curators who selected her works to be one of fifty international artists to be published in the International Art Book, ARTISTI. Her awards also include the International Prize Michelangelo, Brancaccio Palace, in Rome, Italy. Additionally, her sumptuous floral paintings were exhibited in Rome, Bruges, Belgium and Milan, Italy at the Gonzaga Museum, for Mantua Contemporary Art Biennale Mantua, and at the Museum of Modern European Art in Barcelona.

In 2020, Nancy Balmert, the “Queen of the Flower World,” was crowned with the International Prize Frida Kahlo in Milan, Italy. Elsewhere in Italy, she exhibited at the International Norman Biennial, in Monreale at the Modern and Contemporary Art Museum G. Sciortino, where she received the International Artist of 2020 award. Highlighted as one of the 50 international artists in The New Artbook of International Contemporary Art, which also included a prestigious exhibition in Florence, at Palazzo Ximènes Panciatichi, in Florence, Italy, Nancy Balmert was showcased in The Great Encyclopedia of International Art, featuring images of her museum-caliber paintings. To add to this honorary list, she was also showcased in Encyclopedia Art Dossier 2020. In 2021, Ms. Balmert was chosen as one of 50 (International) Artists to Invest in and was awarded International Prize “Ambassador of Art” 2021. She was honored to be included in the prestigious “Art Universal Encyclopedia of International Art.” Most recently, in October 2022, Nancy Balmert was invited to exhibit at the Louvre Museum, in Paris, France. Added to the apex of Nancy Balmert’s widely acclaimed credentials, is being a noted published author, having published “Moments of Truth: A Tour of the Other Side.”



ISLAND OF SARDINIA, Italy
Acrylic on Gallery Stretched Cotton Canvas & Floater Framed
36" X 48"

BARBARA DONOVAN

Vincent Van Gogh advised, "It is not the language of painters, but the language of nature which one should listen to." Recalibrating this philosophy, contemporary Virginia painter Barbara Lee Donovan's acrylic on canvas landscape compositions present a captivating conversation with Mother Nature. Filtered through a sensorial perception and visceral imagination, she adroitly captures a prismatic co-relationship with the natural phenomena of the universe. By portraying the vast expanses of the natural terrain, Ms. Donovan passionately responds to the sublime majesty of nature with an emotional bravura of color, form, and texture. Celebrating nature's splendor, Barbara Donovan's visual lexicon is to rejoice in all its various forms of beauty as she renders a parallax sweep of the environment. Pulsating with a dazzling dynamism and cascades of paint, she communicates the raw, visceral power of the magnificence of the organic world.

Blending the sky into the earth, the noted artist's landscape oeuvre is a visual dialogue with the terrain, illustrating the many treasures of Mother Nature. Envisioning a terrain where landscapes are lush, skies are fanciful and mountains tower over immense forests, her acrylic compositions seek to portray the momentary explosions of color and shadows that nature provides. Dramatic in composition, light, and unexpected color, deft choices of colorific, fluid forms create a chromatic sense of nature's spontaneity which unifies the visual space and conveys a vitality of conceptual expressionism.

Highlighted by magnificent color and masterful renderings of the lush terrain, her landscapes are not nature per se, but her feelings toward nature. Viscerally exploring new terrains, Barbara Donovan skillfully illuminates an emotional response to the natural splendor as she adopts expressionistic principles to transmit the harmonic potential of pure nature. With a magical transformation, vibrant hues of gem-colored forms become fluidly organic shapes, echoing the landscape. Reverberating with emotional bravura, cascades of paint create chromatic surfaces and demonstrate a fascinating portal to nature. Saturated with dynamic bursts of dazzling hues, her inspired color palette resonates as much with passion as with tone. Creating lively compositions as well as a conversation between her natural subjects and their environment, Barbara Donovan expresses sentiments, emotions and feelings inspired by and representative of our surrounding world.

Synergistically connected to the sublimity of the universe, Barbara Donovan invites viewers to experience newly redefined visions of the natural world. Her brilliant artistic lexicon carefully stimulates a dialogue between tone and texture as she intensifies atmospheric pools of brilliant spectral hues to reveal organic shapes found in the terrain. These visual topographic vortexes invite the viewer to an uncharted chromatic realm, transcending emotional boundaries to reach a universal language. Creating a spiritual natural haven where nature and color are paramount, her syncopated response to the universe catapults Barbara Donovan to a contemporary master status.

Barbara Donovan's innovative co-relationship with Mother Nature allows her to document the temporal beauty of nature with richly hued textures. Her rich, sensory tableau offers a new lexicon of the land, communicating the importance of treasuring the organic world. Translating onto canvas the ephemeral moment of nature, award-winning painter Barbara Donovan has participated in a lifetime of immersion in the arts, culminating in a wonderful body of work and has embarked on a painting career which has elevated her into a meaningful position in the contemporary art arena. Having enjoyed numerous successful exhibitions throughout the U.S., the presence of her works in prestigious collections across the world, is affirmation of her continually expanding reputation.



Summer in my Garden
Acrylic & Mixed Media on Canvas
32.8" x 25.3"

TORHILD FROYDIS EID

Inspired by the statement of Cezanne, “In order to make progress, there is only nature, and the eye is turned through contact with her.” Turning her eye towards nature, Norwegian artist Torhild Froydis Eid’s sublime mixed media acrylic on canvas abstract landscapes manifests this credo as she romantically visualizes the beautiful in nature. Her paint brush highlights a special spiritual inner portrayal of the terrain which is not readily apparent to the human eye. Ms. Eid explains: “In my paintings I seek to transfer my inner sensations and what I see from “my inner eye” to the canvas. Often it turns out in an unpredictable form. Introspection is also important, as a mean of revealing and restoring painful memories. As well as focusing on healing and seeking peace.”

Revering the land and the sky, Torhild Froydis Eid’s artistic vision crystallizes an intimate dialogue with nature, using her canvases to explore landscape painting in all its divine, mystical, and spiritual aspects. With her eye directed to the heaven and to the earth, she translates the beauty and light of the Impressionist to achieve illuminated colors and trans luminescent light. Within her abstract landscapes, Ms. Eid asserts her own distinctive visual lexicon and evocative visionary syntax where she gravitates towards ethereal views of the terrestrial world. Offering a deep spiritual reverence for the universal beauty of Mother Nature, Ms. Eid infuses her paintings with a powerful emotional poignancy which reflects the contemplative drama of the sublime forces of nature.

Intermingling an exquisite sensitivity to the natural elements, Torhild Froydis Eid’s romantic, atmospheric abstract nature oeuvre is deeply connected to the aesthetics of the seasons and nature’s tempos. Fascinated with the external realm, she delicately explores the fragility and intensity of the inner terrestrial world, echoing the beauty and energy of the land, sky, and water. Tempered with a delicate ambiance, her works balance the fragile relationship that humanity shares with nature. Heightened by a sense of subtle contrasts, Ms. Eid emphasizes the ephemeral and fleeting composition of nature as she illustrates the sublimity of the natural world.

Imaginatively exploring a fascinating visual dialogue between our internal emotions with the external environment, Torhild Froydis Eid’s oeuvre is united by a luminescent sense of beauty and mystery of the world. Her dioramas communicate a rich tapestry of the colors of nature as she examines the sensorial universe. Dramatically focusing on vibrant contrasts between light and dark, her illuminated oeuvre encapsulates the evanescent temporality of nature as her unique artistic vision is innovatively drawn to the sublimity of the natural terrain.

Magically creating a spiritual experience of nature’s perfect harmony Ms. Eid’s landscapes reflect a highly romanticized view of the terrestrial realm as she augments a sense of the externalism of nature. Torhild Froydis Eid has cultivated a strong reputation in the international and national art world and has earned accolades for transcribing nature’s calming and healing influence on our natural environment. Internationally recognized, her masterful landscapes have catapulted her to national and international recognition to become one of the most celebrated landscape artists. Brilliantly translating onto canvas with a syncopated beat the magnificence of nature, the award-winning artist has participated in a lifetime of immersion in the arts, culminating in an outstanding body of work.



Two Roses in a White Bowl
Oil on canvas panel
11" x 16"

FRANK HOFFLER

Claude Monet mused, “Nature won’t be summoned to order and won’t be kept waiting. It must be caught, well caught.” Inspired by this proclamation is Wisconsin artist, Frank Hoeffler, whose incandescent heaven-on-earth still life and landscape paintings commemorate the majesty of nature as he immortalizes the permanence of our natural world. With an unparalleled ability to capture the essence and spirit of the terrain, he channels Impressionist inspirations into splendiferous depictions of global vistas. Through a spectral color palette, he invites contemplation of the lushness of the land as he fuses the imagery of nature with the sensation and emotionality of powerful painterly expressions. Mr. Hoeffler’s paint brush becomes a tool which unites the universality of nature through a global perspective.

Encapsulating the evanescent temporality of nature, Frank Hoeffler’s oeuvre captures metaphorical shapes and forces from the terrain. His exuberant landscape, still life and floral subjects explore the expanse of nature, showcasing the national essence of our universe. By highlighting the phenomenon that majestically defines Mother Nature, his sunlit serene landscapes and opalescent floral still life paintings express the sublime rejuvenation of experiencing the natural world. The powerful energy of nature’s divine grace is magnified by his expressive color palette, in which the balance of bright and muted tones creates a dynamic rhythm and vivid sense of space. The resulting images conjure up a world that feels utterly believable and real, while remaining part of the artist’s inner, personal vision.

With an intense focus on the subject matter which allows him to amplify the beauty of nature, Frank Hoeffler’s compositions anthropomorphize into a spiritual harmony uniting humankind with the universe as his artworks become meditative portals for viewers to contemplate. Through his creations, he transports the viewer to a natural paradise where one may revel in the power, purity and sanctity of nature. Manifesting a sacred simpatico with nature, Mr. Hoeffler imbues his bountiful canvases with a spirit of freedom, resonating with visual majesty and sublime power. An emotional quality is transmitted which becomes the true essence of his paintings, using the medium of paint and canvas to become a symbol of one’s emotions about the natural world.

Both modern and timeless, Frank Hoeffler’s masterful compositions provide beauty and inspiring concepts as he commemorates the splendor of nature and immortalizes the permanence of our natural world. Wishing to enshrine that which is beautiful, he freezes lyrical scenarios and offers a permanent remembrance of charming panoramas which inspire through their peaceful serenity. The award-winning artist Frank Hoeffler showcases his artwork in solo and group exhibitions throughout the United States and Europe. Treasured in both public and private collections, Amsterdam Whitney Gallery is proud to showcase the nature-inspired works of this natural art star!



Breaking Through
Watercolor on Paper
20" x 16"

APRAJITA LAL

“Nature always wears the color of the spirit,” proclaimed Ralph Waldo Emerson. Spiritually responding to this exclamation is Aprajita Lal whose nature-inspired oeuvre enjoys a co-relationship with Mother Nature. Chromatic and dynamic, her landscape and floral watercolor paintings boast an exuberant intermix of dazzling colors which are intermingled with expressive emotion. By offering a visual interpretation and emotional response to the environment, Ms. Lal effortlessly blends colors to contribute to exciting organic dreamscapes which communicate her awe of nature’s eternal capacity for renewal and regeneration. The concept of examining the timeless interconnection between art and nature and color, transposes Aprajita Lal’s artistic visions into a tangible, visual vortex where extraordinary hues burst forth, enervating every hue in the spectrum, energizing our interaction with the universe.

Successfully distilling a singular scene into a filtered moment in time, Ms. Lal’s nature dioramas achieve a delicate balance by probing an inner depth and a dynamic power of the terrain, resulting in an emotive and aesthetically memorable scenario. By subjectively connecting to nature’s vital energy, her oeuvre encapsulates the emotional power of the world, and the visceral moment is translated to eternity. As she transcends the everyday, these sensorial images evoke eternal visions within the viewer’s own personal relationship with nature, as she transcribes its colors, shapes, and rhythms.

With the belief that color is the uniting force of her nature oeuvre, Aprajita Lal’s paintings appear at first sight, calm and harmonic, but when studied closely, the veneer of harmony and tranquility soon gives way to a multi-layered, rich labyrinth of hues. Deeply connected to color and to spirituality, Ms. Lal infuses her colorific dazzling palette with sumptuous hues which dance on the surface. Dramatic in composition, evanescent light incandescently illuminates the sublime emotional vistas resulting in atmospheric romantic dioramas. These divine opalescent ‘windows to the world’ radiate the spiritual majesty of nature.

Masterfully crafting her compositions with a constellation of colors, Aprajita Lal displays a complete understanding of the artistic language, employing intuition and spontaneity. Powerfully integrating intensity of color, mood, and texture into each kaleidoscopic composition, swirling, expressionistic brushstrokes form a luscious jewel-tone color wheel which complement the intriguing nature scenes. Creating luxurious textures in nuanced, lush layers of watercolor result in brilliant hues. The overall effect is one of visceral expressionist introspection and aesthetic intrigue. Fluid and imaginative, her intermix of a cauldron of colors point to a strong artistic identity in which each hue and mark overflow with exploding vitality.

Internationally exhibited, the cosmopolite Indian born New Jersey based artist Aprajita Lal’s art is globally recognized. A passionate and lifelong proponent of the arts, her oeuvre underscores the belief that art is love, love is life, and art is life. Brilliantly integrating creativity into her contemporary master’s oeuvre, her paintings embody the essence of the resplendence of the world. The presence of her works in prestigious collections across the world is an affirmation of her continually expanding reputation. Amsterdam Whitney Gallery is proud to showcase the art of this important Master.



The Hunt
Mixed Media on a Circle Canvas
30" Round

THOMAS LOCKHART

The Chinese philosopher, Confucius, declared, “Art has meaning if it is truer than reality.” Celebrating the reality of his subjects, Thomas Lockhart’s portrait oeuvre explores this philosophy as he skillfully examines their inner core. A singular and sensitive storyteller, his images signal a solidarity with his compositions, exuding both sincerity and strength. Between the layers of mixed media paint, he reveals the layers of the human soul as each level of reality is transitioned by a coat of paint. At the heart of his portraits is his ability to capture and unmask their multitude of features which reflect the spiritual and philosophical dimensions of life. Mesmerized by the powerful force and medium of poetic expression presented through his portraits, the Colorado artist establishes personalities who are truer than reality as he unravels their unconscious soul.

Figuratively and literally, Thomas Lockhart’s male and female subjects present their authentic persona revealing their true essence. Offering an open-ended message to his audience, this gifted artist renders a poetic element to his paintings, illustrated through contemplative symbiosis of the mind, body and soul of life. Synergized by the silhouettes’ individual realm of reality, Thomas Lockhart’s oeuvre reflects their personal symbolism and allusions as he intermingles the convergence of fantasy and reality. A mixture of the real and the unreal complete a composite personality which enable the audience to understand the whole persona. The artist states: “I capture even the most fleeting thoughts and visions. Inspiration comes from music, nature, to current events and the Word of God.”

Transcribed with decorative, organic elements, a raw honesty emerges showcasing the psychological makeup of each syncopated figure. With dramatic intensity, he creates visceral pictorial wholes as the personality behind each subject is brought to light. Provocatively solemn, yet bursting with exuberant character, these compelling portraits are layered with dazzling narratives that celebrate humanity, all siphoned through a nuanced and skillful hand. Emotional clarity defines the subconscious of the human soul, as each synergistic work becomes a mirror, a window, a portal, transparently allowing the personality to shine through the canvas.

By finding the essence of humankind, Thomas Lockhart’s paintings manifest the harmonious relationships of life and are a visual counterpoint to understanding humankind’s relation to the universe. Drawing inspiration from life, he portrays their holistic divinity as he celebrates our metaverse by paying homage to his beautifully developed subjects, painting their visible and invisible beauty. Seeking to illuminate the beauty of his objects, he synthesizes a painting lexicon that communicates the complex essence of their inner soul as he masterfully shines the spotlight on their personality through an innovative cadence of form and perspective.

Intuitive and flowing with emotion, each brushstroke encapsulates a hidden message emanating from the silhouette’s soul, inviting contemplation. Steeped with ingenuity, Thomas Lockhart’s oeuvre is the fruit of genuine expression as he adroitly incorporates sublime beauty into emotional, contemporary works. Extensively exhibiting throughout the United States, Thomas Lockhart’s art is treasured by both corporate collections and private collections. Amsterdam Whitney Gallery is proud to shine the spotlight on this important Art Star!



CHECK THIS
Acrylic on Canvas
12"x 12"

LORI MOLE

Henry Wadsworth Longfellow mused: "Music and art are the universal language of mankind." Conceptually connected to this philosophy is California artist Lori Mole and her musically inspired expressive oeuvre illuminating Longfellow's ideology. By gesturally creating intuitive musical imagery that externalizes her response to the sounds of the world, she synthesizes her compositions with kinetic visualizations of the melody of life. On a two-dimensional surface, Lori Mole's sensorial realm emblemizes a high-voltage, artistic heart-felt reaction to the complexities of sound. Resplendent with iconography featuring musical instruments such as the saxophone, the piano, and musical keyboards, Ms. Mole also showcases images of hearts which symbolize her love of music and life.

With a love of rock-and-roll and jazz, Lori Mole's incandescent visual syntax encapsulates fortissimo visions as each painting dynamically creates its own individual narrative, encouraging conversations of interpretation. The formal aspects of visual language - the alchemy of color and tone and the nature of shape and pattern - are variable elements that amalgamate to form an equilibrium. The correlation of repetition and musical cadence results in a crescendo of rhythm and pattern. Ultimately, each image is an experience unto itself, allowing the audience to step through the portal of the picture and enter the musical world of Lori Mole. Creating provocative visual stories, these unique works encourage viewers to look and listen to the beat of her sensorial composition.

By echoing the incantations of life, Ms. Mole's non-mimetic formal painterly vocabulary of abstracted- yet semi-figurative compositions synthesize her perceived lexicon. As she explores formal painting qualities which harmonize a symphony of shape, light, color, Lori Mole communicates inner moods and emotions while shining the spotlight on a new visual lexicon of painting. Adroitly re-contextualizing a parallax vision between the mind and soul, her artwork radiates an inner orchestration of joy, resonating with the powerful energy of life. Brimming with dazzling-colored forms and super-saturated color, she artistically choreographs a universe that is replete with a modernistic twist that reflects the dichotomy between reality and perceptions.

Reverberating with elan and brio, the color palette of Lori Mole is both striking and provocative. Explosive and polychromatic, her color wheel is uplifting and emotive, inspiring the viewer to rejoice in the affirmative joie de vivre of life. A vortex of dynamic brushstrokes accentuates emotion and passion, as her modernistic art captures that which underlies the immediately discernible. Spiritually connecting the experience between the mind and the body, her oeuvre fuses imagination with reality, combining lived experiences with subconscious reactions. Lori Mole's unique artistic vision masterfully creates visceral dioramas which allegorically express a thought, a concept, an observation, or a state of the mind.

Fluidly translating onto canvas a vibrant artistic syntax which synthesizes the ephemeral joy of life, award-winning painter, Lori Mole's visceral oeuvre provides a special artistic perspective into humankind. Brilliant and inspired while interspersed with a modern edge, her expressionistic art has received national and international accolades. A winner of multiple awards for her expressive artistic devotion to her subjects, her art is celebrated on the West Coast and the East Coast as well as in Europe. Showcased in important private and public collections, Amsterdam Whitney Gallery is proud to shine the spotlight on this contemporary master who shines the spotlight on a fresh and exciting perspective to the world. Fluidly combining figuration into expressive vignettes, her oeuvre heralds a deeper symbolism as these visual symbolic messages highlight a fresh and exciting perspective to our world.



Flower 2
Heavy Weight Paper Marker & Acrylic
20" x 25"

YUJI MOSTAFAVEE

Organically influenced by Gustave Moreau's statement: "Nature is simply the opportunity for the artist to express himself," Yuji Mostafavee's nature-inspired floral oeuvre conveys her visceral response to the wonderment of the environment. Creating paradisiacal acrylic floral panoramas which channel her unique artistic vision to reveal a magical realm, she invites us to her inner terrain where she bypasses the boundaries of everyday reality, all of which are imbued with effusions of chromatic color and radiant light. With a mesmerizing reinterpretation, her unbridled emotion reveals a hypnotic, atmospheric haze of the natural terrain which intermingles with a lush labyrinth of fantasia. Intuitively reflecting on the expressive color and design of nature, Yuji Mostafavee transcends the limitations of the everyday with expressionist floral work that juxtapose serene natural settings with the spectral dynamism of chromatic color. Innovatively illustrating the infinite beauty of nature, her dream-like flora art exalts the ability of creativity as she portrays an enchanted kingdom of nature.

Sharing a co-relationship with Mother Nature, Yuji Mostafavee reclaims nature and establishes a rendezvous with the elemental forces of universe. Universally timeless and eternal, her visceral floral narratives intermingle an emotional message as her magical nature terrain is re-envisioned with fresh eyes. With consummate virtuosity, these luminous masterpieces are saturated with dazzling color, light, form, and texture, offering a rich sensorial tableau that illuminates the emotional intensities of nature. With a spectacular electric vigor, her passionate dialogue begins with a fluid, tactile visceral experience and ends with a syncopated commemoration of the natural world.

Creatively balancing the visual harmony of the terrain, Ms. Mostafavee visually encapsulates the ephemeral essence of the floral realm. Being at one with the natural kingdom, she records her unique responses to the pictorial universe and the vast expanses of the rhythm of nature. With panache and an acute passion for color, her bold imprimatur tones burst forth with an explosive and exuberant charm. This fluid choreography of chromatic hues become the catalyst which empower her work. Through a contrasting color palette, she imparts the essence of amorphous nature with an illusory world, featuring fantastical vistas which transport us from the realities of everyday life to a magical, chimerical kingdom.

Celestially dramatic, Yuji Mostafavee's atmospheric compositions vibrantly bring nature's artistic language alive through her aesthetic lexicon which intermingles the emotional impact of the wonderment of the terrain. An intense and sensuous relationship with the topography of the world defines her sublime compositions, revealing that nature is beyond the reality of our senses. Through this magical osmosis, her beautiful paintings translate the environment's essence. Adroitly illustrating that a blooming is the divine physical component of the earth, Yuji Mostafavee is a master of her medium.

Alluring and seductive, Yuji Mostafavee's oeuvre conveys the mystique and mystery of the environment with masterful compositions which are identified by her enticing personal vision. Galvanized by the divinity of nature, contemporary painter Yuji Mostafavee's nature-inspired floral panoramas explore a remarkable visual dialogue. The Asian born, New York - based award-winning painter has participated in a lifetime of immersion in the arts, culminating in a wonderful body of work and has embarked on a painting career which has catapulted her into a meaningful position in the contemporary art arena. Her noteworthy exhibitions have been showcased in Japan, Korea, Europe, and New York. Amsterdam Whitney Gallery is proud to showcase this flowering natural star!



New England Rock Walls
Oil, Metal & Gold Leaf on Board
20" X 24"

JOHN PETERS

Frank Lloyd Wright advised: “Study nature, love nature, stay close to nature. It will never fail you.”

Artistically aligned with this advice is John Peters who is profoundly connected to the environment and channels his sensory experiences onto the canvas. Naturally inclined, John Peters’ magic realism oil on canvas compositions harvest a cornucopia of nature’s colors and sensations as he uniquely unearths the bounty of the landscape realm. Dramatically reinterpreting nature, the Michigan and New Hampshire based artist’s compositions reverberate with a keen perception of the expansive, diverse terrain, as he moves beyond merely representing nature and extends his translation to emotionally illustrate the power and passion of the natural realm.

Recalibrating a unique view of nature, John Peters’ magic realism is galvanized by his view of the terrestrial realm is rooted by a fresh twenty first century vision of the natural world. Observed through the lens of his paint brush, John Peters’ expressive response to the environment is given a reinterpretation- a new dress for nature to wear. Fascinated by the terrestrial realm, John Peters communicates an expressionist viewpoint on the fantasy of nature with a painterly atmospheric narrative. Illuminating the reality and unreality of the world through a visual hierarchy, he encapsulates a perfect aesthetic lexicon of the topography of the land. Unexpectedly applying delicate gold and metal leaf to his landscape subjects, Mr. Peters intermingles the light of the Impressionists, the brilliant color of the Fauves, the visceral power of the German Expressionists along with the dynamic energy of the Abstract Expressionists all of which create a dynamic translation of nature.

Deeply anchored by an invigorated connection to the environment, John Peters’ enduring view of the magic of nature is replete with synchronized, densely textured, oil on canvas compositions. By removing all traces of humanity to focus on the power of the terrain, he adroitly illustrates an organic recollection of the everlasting splendor of the exterior world. Echoing the harmony of nature by incorporating a visual dialogue between line, paint and subject matter, his bold use of the palette knife, brush strokes and gold leaf respond to the rhythm of nature. Interweaving a rich tapestry of color, texture and form, his landscape scenes are emboldened by a maze of undulating, highly saturated colored forms.

Naturally painted with panache and an acute passion for color, John Peters is renowned as a colorist, employing boldly expressive, spectral brush strokes, culminating in a rich and tactile surface alive with pigment. The imprimatur tones of his igniting colors burst forth from the canvas with an explosive and effervescent force and this fluid choreography of painterly gestures and hues becomes the catalyst which empowers his canvases to become excitingly alive. Through contrasting colors, he imparts the essence of amorphous nature as he renders singular, meaningful moments that define his special impression of the organic world.

Timeless and eternal and strikingly beautiful, John Peters’ nature masterpieces are saturated with color, light, form, and texture as he offers a rich sensory tableau that illuminates the emotional intensities of the terrestrial environment. Award-winning painter John Peters has participated in a lifetime of immersion in the arts, culminating in a wonderful body of work and has embarked on a painting career which has catapulted him into a meaningful position in the contemporary art arena. Active with the Detroit Institute of Art, Mr. Peters is also a well-respected author of several art books. This masterful artist has enjoyed numerous successful exhibitions the U.S., and the presence of his works in prestigious collections across the world, is affirmation of his continually expanding reputation.



Autumn Bridge
Oil on Board
15.7" x 19.6"

STEFFI RODIGAS

Inspired by Henri Matisse's philosophy: "An artist must possess Nature. He must identify himself with her rhythm, by efforts that will prepare the mastery which will later enable him to express himself in his own language," Steffi Rodigas's "Four Seasons" series celebrates the four seasons, focusing on various international locales. Visually responding to the rhythm and seasonal fluctuation of nature, her chromatic oil on board series resonates with a powerful artistic vision and shines the spotlight on the diverse imagery of spring, summer, fall and winter.

Highlighting a rendezvous with the seasons of nature, Ms. Rodigas's painterly language of iconic landscapes reflects her endless quest to honor the divine beauty, splendor and richness of the natural realm. Her oil on board spiritual meditations on the natural world harmoniously capture the warm illumination of nature with a deft, rhythmic brushstrokes along with a rainbow-hued palette. With symphonic precision, this contemporary modern master translates familiar scenes onto the canvas with a unique perspective, magically encapsulating the wonderment of nature. Luminously conceived, her landscape colors are lightly feathered textures which admirably translate the glory and jubilant majesty of nature while a striking interplay of colors is contrasted with a serene subject matter, all of which reveal a contemporary master at work.

Emotionally expressive, Steffi Rodigas highlights the visceral intensity and ever-changing moods of nature where light, and color are in constant transition. Hauntingly beautiful, her fluid, organic compositions relish Mother Nature's lush curves and boundless energy. Being less concerned with documenting specific scenes, she is focused on capturing nature's essence- the deeply profound moments, where there is a connection to a vital energy. Her process begins with being in nature, where she allows the emotional energy of the landscape to filter through her psyche. Excelling at depicting the environment around her, it is not the tangible qualities that are highlighted in her paintings, but it is also the softly polychromatic memories of a specific local. The spiritual memory is then permanently transcribed onto canvas and the result is a radiantly dramatic commemoration of nature as she wishes to evoke remembrances within the viewer's own personal relationship with the terrain and the changing seasons.

Internationally recognized, Steffi Rodigas's masterful landscapes have catapulted her to national and international recognition to become one of the most celebrated landscape artists, gracing viewers with her atmospheric compositions of sky, river, and earth. Brilliantly translating onto canvas with a syncopated beat the magnificence of nature, award-winning painter Steffi Rodigas has participated in a lifetime of immersion in the arts, culminating in an outstanding body of work and has embarked on a painting career which has transported her into a meaningful position in the contemporary art arena. This German-based artist has enjoyed numerous successful exhibitions throughout Europe and the U.S., and the presence of her works in prestigious collections across the world, is affirmation of her continually expanding reputation.



Sunflower Welcome
Oil on Canvas
16" x 19"

SALLY RUDDY

“Fleeting Moments-III”

Lord Byron proclaimed, “Love not man the less, but Nature more.” Spiritually contemplating the co-relationship between humankind and Mother Nature, California artist Sally Ruddy strives to paint a harmonic correlation conjoining us with the terrestrial realm. Influenced by Lord Byron’s inner love of the world, the gifted artist micro-manages her kinship to the universe, intermixing soulful perceptions with external observations of the natural world. Recalibrating nature’s ephemeral moments and preserving its permanence, Ms. Ruddy memorializes momentary visual impressions in her new collection: “Fleeting Moments- III.” Anointing nature’s imagery for eternity, Sally Ruddy’s communion with the external realm orchestrates a heavenly visual present of the joie de vivre of the universe, offering a sensorial record of the fluidity of the world.

Intimately conversing with the terrain, Sally Ruddy romantically treasures the quiet, still moments of life, whether it be enjoying a cup of tea or pensively contemplating a private moment. An illuminated spectrum of opulent colors evokes a sense of spirituality and tranquility as she lyrically manifests her kindred spirit with nature. Poetically expressing the boundless expanse of our universe, she ethereally transcribes the beauty of our world. Divinely reflecting on the natural universe and our visual rapport to it, her incandescent oeuvre shimmers with the power and beauty of nature. With her signature style and flowing polychromatic color, Ms. Ruddy enhances the ever-changing complexion of the landscape of our lives.

Intimately reflecting the natural wonders of the earth, Sally Ruddy’s rainbow of colors reflect liquid sunshine. By reorienting the viewers’ perception, her panoramas visually re-define our environment as they offer a chromatic synthesis of the natural world. Conjuring associations of our love affair with nature, Ms. Ruddy’s one-on-one compositions meticulously attain a perfection of colors. Working in oil on canvas, she employs a soft palette in which tonality contrasts are subtly employed to create effects of light, movement, and space. Creating movements and vibration with unexpected hues, blocks of color and controlled paint echo the constant evolution of nature. Exceeding human limitations by expressing the underlying celestial cycle of the universe, her magical oeuvre focuses on the atmospheric phenomenon of our lives in nature.

Bathing her transluminescent oeuvre in a softly muted depth of mist and shadow, Ms. Ruddy shifts our vision to a moment of serenity, revealing an elemental and transcendent dance between atmosphere and light. Linking humankind with nature, her “Fleeing Moments III” series reflects the joie de vivre of life. The fluidity of this organic sphere is comprised of precise, deft brushstrokes, all coalescing to harmoniously create a constellation of fluid form with infinite regeneration. Painting humankind’s ever evolving relationship with nature, her visual language dances with shape, color, and dynamic motion.

Yielding an organic touch, Sally Ruddy’s imaginative “Fleeting Moments III” series interprets the introspective moments of life and is a visual investigation into what nature means to humans. Driven by luminescent creativity, this visionary creator is celebrated for her masterful compositions which illustrate the beauty and connection between humankind and nature. Celebrated both in Europe and the U.S., the award-winning artist Sally Ruddy has exhibited in the United Kingdom, France, Italy, as well as the U.S. Acclaimed for her visceral canvases and nature-inspired panoramas, this highly acclaimed artist’s artwork is treasured in many public and private collections worldwide. Amsterdam Whitney Gallery is delighted to shine the spotlight on this natural star!



Mt. Fuji Add to the Red Leaves
Digital Photography
30"x 22.9"

YOICHIRO SAKAI

Henri Cartier-Bresson advised: “To photograph is to hold one’s breath when all faculties converge to capture fleeting reality. It is at that precise moment that mastering an image becomes a great physical and intellectual joy.” Following this advice, Japanese photographer Yoichiro Sakai’s “Third Eye” translates a personal vision of the world. Optically guided by this principle, Yoichiro Sakai’s digital nature photography utilizes the full spectral abilities of the lens to view life and create new meanings for the future.

Masterfully manipulating his lens, he captures a unique vision forming a simulacrum of the topography of the world. With visual dialogues that personally aspire for a universal language, Yoichiro Sakai’s visionary digital landscape oeuvre creates innovative narratives, connecting his art to the natural terrain. Through his lens, he filters a unique aesthetic vision, resulting in a creative reinterpretation of the terrestrial realm. Vortices of nature are frozen in time to reveal a snapshot of the syncopated algorithm of life through his skilled digital oeuvre. Employing the camera to illustrate the mystery of nature, he invites viewers on a journey across parallel dimensions.

Sophisticated and bold contours reflect an incredible force of vision and vitality where the dance of light, color and nature’s resplendence combine with unexpected intersections of shapes and lines to produce striking images of the topography of the land. Like a beautiful poem, his digital photography reflects a mystery, an elusive and haunting nucleus that compels us to probe its depth, opening a window into another insight. The mystery is often in plain sight; however, its meaning may be obscured by the passage of time.

By freezing the familiar scene, he offers a new meaning by creating a mood through powerful light and ingenious color. Capturing the magic of the world, Yoichiro Sakai’s reflective lens relishes nature’s essence and its profound moments. By connecting to nature’s profound energy, this gifted photographer’s lens filters the emotional power of the world, and the moment is translated to eternity. As he transcends the everyday, these sublime images evoke eternal visions within the viewer’s own personal relationship with nature, as he transcribes its colors, shapes, and rhythms.

Yoichiro Sakai’s camera conjures a world that brings us closer to humankind, favoring the viewer with eternal snapshots with a contemporary perspective. Superseding style by creating each photographic scene with imagination, respect, and unique lyricism, his photography oeuvre becomes a powerful reminder of the importance of our universe, as he embraces its sights and scenes. His award-winning compositions have achieved global acclaim and The Amsterdam Whitney Gallery is honored to shine the spotlight on this photographic master.



"Playing with Fire"
Oil on Canvas
18" x 24"

IRENE VAN CELESTINE

Joan Miro proclaimed: "A painting should be like sparks. It must dazzle like the beauty of a woman or a poem." International artist, athlete and medical doctor, Irene Van Celestine's incandescent, oil on canvas female figurative paintings are spectral optical reveries which ignite human consciousness into thoughtful contemplation of universal desires, emotions, and experiences. Entering the glimmering world of her intriguing artistic vision, one finds a horizon sparked by rich hue, magnetic texture, and visceral mood. Alluring and enticing, the illuminated fluidity of her expressionist female figurative silhouettes seductively reveals personal and subjective emotional reactions providing a window into the complexity of her poetic ideas and intelligence. With a powerful iconography that allegorizes love, sisterhood, beauty, and eroticism, the alchemy of life is imperceptibly perceived as she opens sensorial portals to fresh perspectives of femininity, love, life, and human relationships.

The artist invites us to the "Irene Van Celestine Firmament" which is inhabited by female goddesses who exist outside any time, space, or cultural moment and who reverberate visceral energy as well as radiate feminine sensitivity, strength, and pride. Magicalized and mythologized as goddesses, her swirling female silhouettes celebrate the female realm where Irene Van Celestine captures their celestial dynamism and magnetic power. Imbued with imagination and fantasia, she re-contextualizes a dreamlike world with striking, undulating dancing figures who pulsate with mysterious imagery and whisper romance and intrigue. Fantasy and whimsy intermingle as romantic, floating, sensual female silhouettes enchantingly resonate in her visual allegories.

Depicting mystical worlds that bypass time and space, Irene Van Celestine offers a private rendezvous with the elemental forces of the universe. An enchanting yet ominous vision of a fire, demons and jganimals intertwine between powers of creation and destruction. Fluidly interweaving colored, curvilinear female silhouettes into her expressive canvases, a panoramic story unfolds heralding a deeper universal symbolism. Expressing the inner depths of limitless emotions through the dynamic beauty of the physical female form, Ms. Van Celestine is intrigued by the psychology of her subjects, creating a visual narrative. Hidden emotions are reflected through the natural beauty of the female face and figure as her luminescent canvases are built up through layers of highlights and dark shading.

Conceptually provocative, Irene Van Celestine's female figurative storytelling oeuvre offers an illusory realm of female reverie to help us understand women, and to comprehend their platform in the world. Imbued with life and all its intricacies, this kinetic conversation on canvas portrays women in various states of clarity. Emblazoned with a hybrid blend of organic shapes and curved lines, her female-centric silhouettes metamorphic on canvas with a cascade of chromatic paint. Unraveling nuanced societal symbolism with rich, exuberant female.

Emigrating from Russia and Ukraine to the United States, the cosmopolitan Irina Mezheritskiy, whose nom d'artiste is Irene Van Celestine, now resides in Florida and is a medical doctor, an award-winning body-building athlete, and an artist. Reflecting a global perspective spanning across cultures and countries, the multi-talented Ms. Van Celestine's paintings symbolically empower women with positivity and hope, encouraging them to look ahead to a brighter future. Timeless and eternal, her illusory figures transcend the canvas swirling and dancing, fusing a visual symbiosis between energy and form. Amsterdam Whitney Gallery is proud to shine the spotlight and showcase the artwork of this cosmopolitan global art star!



Underwater X-ray
Oil on Canvas
30" x 40"

LULU ZHENG

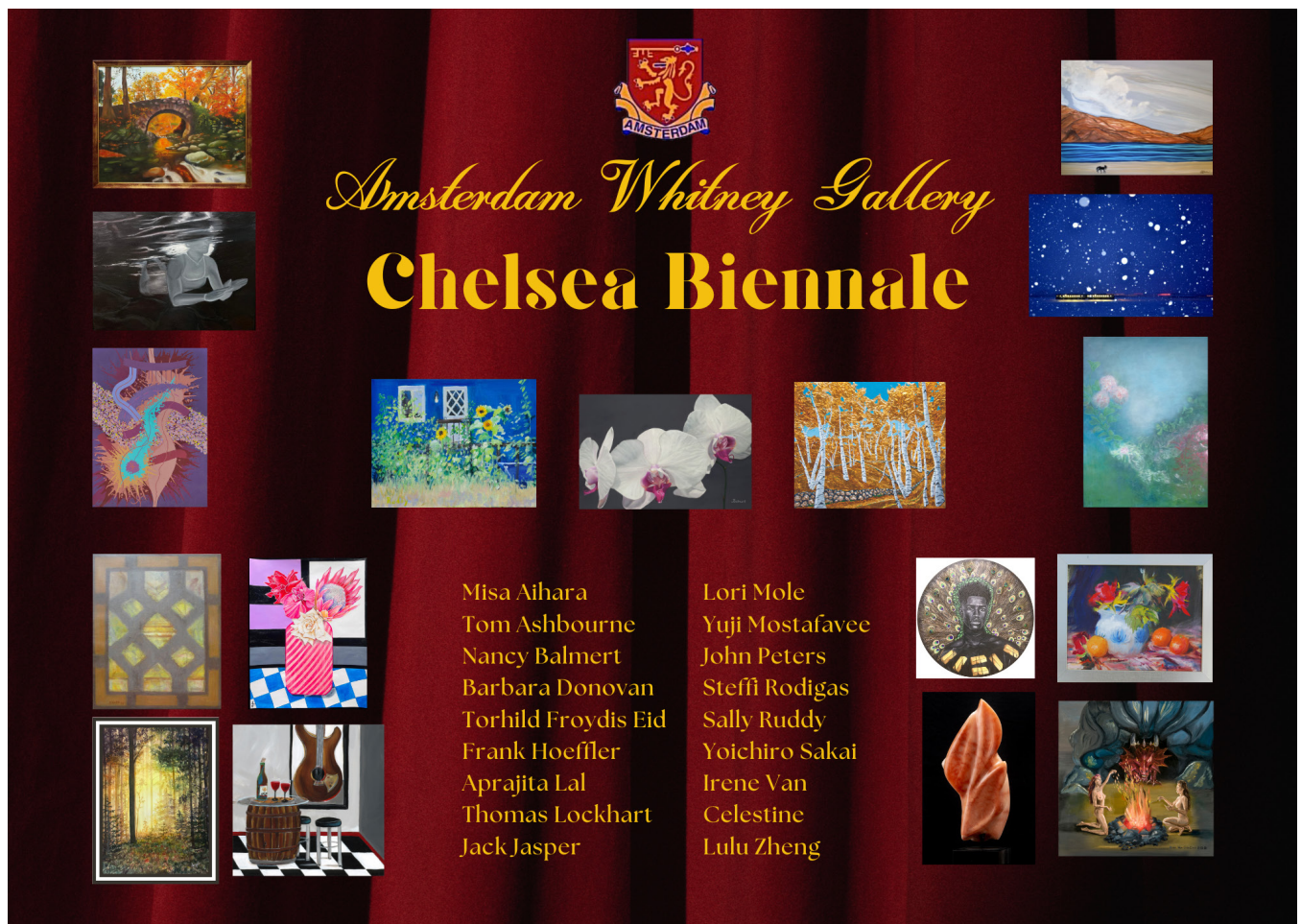
Observing the flow of life, Leonardo da Vinci declared: “Water is the driving force of all nature.” Buoyed by this theory is Michigan based artist, medical doctor and swimmer, Lulu Zheng, who pays homage to aquatic activities in her latest series of paintings. Diving into her unique artistic vision, she holds her breath as she inhales the joy of the external world and exhales its beauty. Inspired by her love of swimming and reverence for the environment, her mixed media compositions revel in the wonderment of the world. Whether swimming in a pool or capturing the magnificence of the quiet treasures of life, Lulu Zheng’s spirited-themed oeuvre encapsulates her response to the marvels of the environment. Reimagining the universe, her figurative mixed media, oil, and acrylic paintings engender a unique visual syntax which integrates a link with the natural terrain and the invisible inner spirit.

Navigating the themes of memory and self, Lulu Zheng’s waterscape paintings reflect sensitive narratives which create environments that ebb and flow with creativity. As she offers thoughtful, meditative reflections, Ms. Zheng’s work centers around overarching themes of human nature and our relationship with the environment. Presenting these ideas in a symbolic narrative, she blends the fluid outlines of the female form with the blue and turquoise colors of the waterscape where body and landscape become one.

Sensitively echoing the symbiosis between the human form and nature, she explores the spatial relationship between the environment and the figurative. The complex interrelationship between the human figure in nature is her a source of inspiration as she assumes an artistic paradigm which combines an aesthetic dialogue focusing on expressive figuration and color. Synthesizing direct observation of the human form which is often inspired by her beautiful daughters Vivienne and Luelle, her subjects interact, coexist, and fuse with their backgrounds as she explores the inter connectivity of nature, humanity, and culture.

Bringing forth fantasy and imagination, Lulu Zheng’s new aquatic collection revisits her signature style of swimmers submerged in water. By highlighting the quiet tranquility of the human form in nature and water, her underwater realm captures a moment of pause within the constantly changing and moving form of water. As she recounts days spent sinking and floating, still, and peaceful, her color saturated works highlight the quiet tranquility of water and nature. Comprised of illustrative painterly elements, Ms. Zheng’s oeuvre is sprinkled with spirited form, color, and perspective.

Masterfully rendering perception and luminescence, Ms. Zheng creates zen-like environments suggesting the passing of time and moments of reveling in nature. Her unique artistic vision unites nature and the human form resulting in imagery that is at once an artifact of nature and a product of the artist’s paintbrush. Not only obtaining a degree in medicine, the award-winning, multi-talented artist and doctor, has also attained a Master of Fine Arts degree from the prestigious Cranbrook Academy of Art. Garnering international acclaim, she has exhibited her artwork in group and solo exhibitions around the globe. Her innovative artwork is treasured in numerous public and private collections worldwide, and Amsterdam Whitney Gallery is proud to showcase the artwork of this natural star who has made a splash on the international art scene!



The poster features a dark red background with a central vertical crease. At the top center is the Amsterdam City Coat of Arms. Below it, the text "Amsterdam Whitney Gallery" is written in a gold, cursive script, followed by "Chelsea Biennale" in a large, bold, gold serif font. The poster is decorated with various art pieces: a landscape painting of a bridge in autumn (top left), a white figure in water (middle left), a colorful abstract piece (bottom left), a still life with a guitar (bottom left), a landscape with a house (middle left), a white orchid (middle left), a forest scene (middle left), a blue starry sky (top right), a landscape with mountains (top right), a pink abstract piece (middle right), a still life with fruit (bottom right), a circular portrait (bottom right), and a figure in a landscape (bottom right).

Amsterdam Whitney Gallery
Chelsea Biennale

Misa Aihara
Tom Ashbourne
Nancy Balmert
Barbara Donovan
Torhild Froydis Eid
Frank Hoeffler
Aprajita Lal
Thomas Lockhart
Jack Jasper

Lori Mole
Yuji Mostafavee
John Peters
Steffi Rodigas
Sally Ruddy
Yoichiro Sakai
Irene Van
Celestine
Lulu Zheng

CHELSEA BIENNALE
October 8th to December 2022

AMSTERDAM WHITNEY GALLERY, located at
210 Eleventh Avenue (between 24th & 24th Streets)
Chelsea, New York City, 10001

CHELSEA BIENNALE

October 8th to December 2022

MISA AIHARA'S vibrant layered abstract "Verko" series navigates the viewer to an uncharted deconstructed spectral realm which explores human interconnection through employment of color, light and shapes, unearthing bold black lines juxtaposed against brilliant splashes of color, resulting in dynamic organic forms.

TOM ASHBOURNE'S sculptures synthesize a newly defined abstract sculptural language with non-objective carved color stone sculptures which unite a harmonious abstract combination to reveal the invisible within the visible, infused with harmony, balance and rhythm, manifesting color, volume, and shape

NANCY BALMERT, "Queen of the Flowers" and the "Yellow Rose of Texas," enlarges the visible natural world to bloom into a fusion of myriad mosaic, chromatic flowers, creating up-close floral oil paintings which celebrate the floral kingdom and cajole us to inhale every beautiful petal and exhale their joy, all the while conveying the subliminal effects of her enchanted floral realm and reminding us that flowers are the gifts from heaven to this earth.

BARBARA DONOVAN's polychromatic landscape oeuvre illustrates the many treasures of Mother Nature where she envisions a visual dialogue with the terrain, blending the sky into the earth, resulting in a recalibrated visual dialogue where landscapes are lush, skies are fanciful and mountains tower over the land.

TORHILD FROYDIS EID romantically visualizes the beautiful in nature, highlighting a sensorial, spiritual inner portrayal of the terrain, not readily apparent to the human eye, reverberating with a wide fulcrum of expressive sensations and resplendent with a cornucopia of nature's colors.

FRANK HOEFFLER channels through a spectral color palette Impressionist inspiration into incandescent still life and landscape paintings which commemorate the majesty of nature as he immortalizes the permanence of our natural world and captures the essence and spirit of the terrain.

APRAJITA LAL'S opalescent watercolors examine the timeless interconnection between art and nature in her lyrically colored -saturated nature dreamscapes which boast a dynamic intermix of expressive, dazzling colors which render a visual interpretation to the environment and communicate her awe of nature's eternal capacity.

THOMAS LOCKHART's mixed media portraits sensitively and skillfully celebrate the reality of his subjects as he examines their inner core through layers of paint which reveal the layers of their soul, unmasking their multitude of features which reflect the spiritual and philosophical dimensions of their personalities.

LORI MOLE's chromatic art musically celebrates the joie de vivre of life with syncopated abstract musical reveries which reverberate with symphonic precision, as she deconstructs reality with expressionistic iconic images of stark black and white checkerboard keyboards, piano keys, musical instruments, ablaze with red hearts.

CHELSEA BIENNALE

October 8th to December 2022

YUJI MOSTAFAVEE creates *paradisiacal acrylic floral panoramas* which channel her unique artistic vision to reveal a magical realm as she invites us to her inner terrain where she bypasses the boundaries of everyday reality, all of which are imbued with effusions of chromatic color and radiant light.

JOHN PETERS, “Master of the Gold Leaf,” renders a celestial, autumnal landscape series, rooted in his love of nature as he rejoices in the grandeur of the terrain, featuring a dazzling, enchanted golden magical terrestrial kingdom which chromatically unearths the human interconnection to the environment, accentuated with kaleidoscopic colors.

STEFFI RODIGAS celebrates the cyclical four seasons with her luminescent oil on board series which magically shines the spotlight on the fluctuation of nature, focusing on various international locales while radiating a chromatic powerful artistic vision which reflects enchanted imagery of the spring, summer, fall and winter seasons.

SALLY RUDDY’S ‘s “Fleeting Moments- Series III,” oil on canvas landscape series is a poetic tapestry of visual love to the natural terrain of the California Central Valley which poignantly interprets the transitory quality of nature with beauty and grace, freezing sensorial scenarios of the terrestrial realm, embracing a permanent remembrance of an exquisite, special moment.

YOICHIRO SAKAI’S digital nature photography harvests a cornucopia of nature’s visions as he utilizes the full spectral abilities of his lens to view life and create new meanings for the future, while capturing a unique simulacrum of the topography of the world, all the while jubilantly rejoicing in the splendors of the universe.

IRENE VAN CELESTINE, artist, medical doctor and athlete, aka Irina Mezheritskiy, paints female figurative expressionist silhouettes conveying a powerful visceral allegory reflecting love, sisterhood, beauty, and the empowerment of women as she alluringly conveys a seductive artistic vision replete with poetic symbolism and intelligence.

LULU ZHENG is an artist, medical doctor, and swimmer whose figurative waterscape mixed media paintings pay homage to aquatic activities, allegorically emphasizing her reverence for the environment as she captures the synergistic magnificence of the quiet treasures of life through the symbolism of evanescent water.