



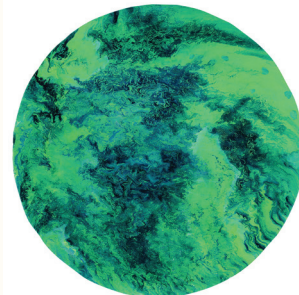
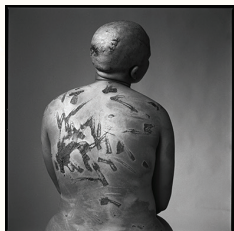
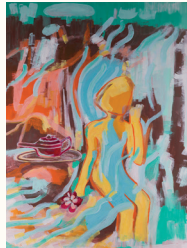
# Amsterdam Whitney Gallery "Chelsea Cosmos"

*September 9th to December 9th, 2023*

**"La Vie Magique Champagne Soirée"**

**Saturday, September 9th, from 2 p.m. to 4 p.m.**

**Guests are invited to walk the red carpet & wear magical attire**



Nancy Balmert  
Stanislav Bartnikas  
Teresa Bellini  
Michael Gleizer  
Deepa Kulkarni  
Peter Mages  
Natha  
John Peters  
Shao Ren  
Miguel Ribeiro  
Robert Swedroe  
Charlotte Szymskie  
Smokey Thomas  
Russell Vanecek  
Patrick Walsh  
Gong Zhang







"Champagne and Orchids"

Oil on Canvas

14" X 11"



# Nancy Balmert

Pierre Bonnard proclaimed: “Art will never be able to exist without nature.” Naturally responding to Bonnard’s philosophy, Nancy Balmert, known as “Ambassador to Nature,” showcases her new dreamscapes’ collection, “Reflections from a Rainbow.” Renown as “Queen of Flowers,” and “The Yellow Rose of Texas,” her oil paintings radiate a delicate balance between the earth and the sky, the sun and the moon. Capturing the eternal, ethereal essence of the floral and still life genre, her old-master inspired canvases resonate the tranquility of nature with a sense of internal energy. Focusing our vision on a moment of serenity, Ms. Balmert reveals an elemental and transcendent dance between atmosphere and light. Painting with an intuitive and softly expressive brushstrokes which feature her signature softly blended edges, she evokes the ever-changing face of the world.

The confidante of nature, Nancy Balmert’s oeuvre shares a co-relationship with Mother Nature and all things beautiful.

As she participates in a romance with the environment, her compositions are a testament to the beauty and exquisiteness of our everyday life. Celebrating the sublime joy and divinity of the world, she forges a visual odyssey that interweaves an expressionist connection between humankind and the wonderment of our universe. Translating her passion for nature into masterful oil paintings, this gifted artist’s imprimatur style emphasizes ravishing color juxtapositions which are showered with stardust and sun-kissed hues. While communicating the ambrosial joys of nature, whether it be floral compositions or still life paintings, Nancy Balmert relishes the magnificence of our environment and encapsulates its permanence for eternity.

Continuing her dialogue with the terrain featuring graceful flowers and their harmoniously tinted nuances of blossoms, every flower and every glass of champagne is a metaphor for rich visions of earthly delights. As she artistically pays homage to the timeless appeal of the natural world, her incandescent prismatic portals to nature are evanescent re-interpretations of the enchantment of life. Ranging from luscious floral bouquets to scenes of sensorial realms to champagne celebrations, Ms. Balmert offers rejuvenescent visions of our world through the shimmering opalescent hues of her paintbrush. Reflecting a visual search for new artistic horizons which explore inner visions and emotions rather than employing words, she magically transforms the banal into poignantly mystical beautiful canvases. Creating a virtual fireworks display of creative and exuberant energy, Ms. Balmert’s nature inspired art evolves into a spiritual metaphoric message of hope, beauty and renewal.

Luminescently echoing the natural terrain, Ms. Balmert’s magical floral and still life kingdom illustrates a visual medley between brilliant color and light, opening a transluminescent window to inner worlds. Stylistically influenced by the Golden Age of Dutch paintings, Nancy Balmert successfully summons a contemporary sensibility with a polished palette. Similar to the 16th century and 17th Dutch Masters, her paintings are resplendently illuminated, with beautifully lit compositions which further highlight her brilliant creativity. Her magical kingdom radiates an aura of transplendence while offering a sensorial record of nature. Her artistic voyage emphasizes that color is not only about externally seeing, but it is also about an internal visceral feeling, as she expertly balances a rainbow of chromatic tones which explode with dazzling contrast.

Never exactly defining specific locations and never populated with figures, Nancy Balmert invites viewers to personally interpret scenes with their own imagination and thoughts. Mirroring her art, the cosmopolitan Texas and Washington State artist has participated in a life-long artistic exhibition journey featuring worldwide exhibits in the United Kingdom, Italy, France, Belgium and the United States. Embodying a keen aesthetic, she poetically illustrates the beauty of nature as her visual stories explore the correlation between the florescence of the heavenly kingdom with the earthly floral kingdom. Timeless and eternal, Nancy Balmert, “Queen of the Flowers,” creates a contemporary golden age of painting as she re-contextualizes the old master style into dazzling new master works.

Acclaimed internationally, Nancy Balmert is the proud recipient of number global awards which cite her high artistic achievement. In 2020, Nancy Balmert, was crowned with the International Prize Frida Kahlo in Milan, Italy. Elsewhere in Italy, she exhibited at the International Norman Biennial, in Monreale at the Modern and Contemporary Art Museum G. Sciortino, where she received the International Artist of 2020 award. Highlighted as one of the 50 international artists in The New Artbook of International Contemporary Art, which also included a prestigious exhibition in Florence, at Palazzo Ximenes Panciatichi, in Florence, Italy, Nancy Balmert was showcased in The Great Encyclopedia of International Art, featuring images of her museum-caliber paintings. To add to this honorary list, she was also showcased in Encyclopedia Art Dossier 2020. In 2021, Ms. Balmert was chosen as one of 50 (International) Artists to Invest in and was awarded International Prize “Ambassador of Art” 2021. She was honored to be included in the prestigious “Art Universal Encyclopedia of International Art.” One of the highest accolades of Nancy Balmert’s distinguished art career was being invited in October 2022, to exhibit at the Louvre Museum, in Paris, France. Most recently, in May 2023, Ms. Balmert and her husband, Paul, traveled to Venice, Italy, to be honored with another highly important artistic award. Added to the apex of Nancy Balmert’s widely acclaimed credentials, is being a noted published author, having published “Moments of Truth: A Tour of the Other Side.”





Soul, Iceland  
Digital Photography on Fine Paper  
35.4" X 23.6"



# Stanislav Bartnikas

“To be good, photographs have to be full of the world,” observed Dorothea Lange. Surveying the globe from an airplane, Stanislav Bartnikas’ aerial photography reinterprets the world from a birds-eye view. Taking photos from a small plane or a helicopter, his unique style of photography, entitled “Aero Art,” is a testament to his unwavering commitment to celebrate the splendor of the terrain from above. With the profound belief that Mother Nature is the most sophisticated painter, Stanislav Bartnikas embarked on a mission to immortalize the awe-inspiring landscapes and natural wonders that grace our Earth. Through his lens, he deftly captures the essence and vitality of each scene, transporting viewers on an unforgettable visual journey.

Through the perspective of his sky-map photography, Bartnikas’ “Aero-Art,” documents the wonders of the universe, imploring his audiences to view the world from a new and elevated perspective. Inspiring us to cherish and preserve the natural wonders that envelop our planet, Bartnikas dedicates his artistic vision to showcasing the Earth’s unrivaled beauty in its most flawless form. As he transcends geographical boundaries, he adroitly encapsulates the boundless energy of our planet through his breathtaking images.

Flying solo, Bartnikas’ lens-based artistic manifesto is to capture nature’s beauty in its perfect form and convey the energy of our planet. Fusing his passion for aviation along with his wanderlust spirit, his sky-views draw inspiration from the landscapes, reimagining the framework of the sky. Through the window of an airplane, familiar scenes are distilled into a grid of composed shapes and linework, with forms juxtaposed with eye-catching accents. By embracing nature through an elevated dimensionality, the imagery of his fluid compositions invite audiences to expand on their relationship with the universe.

Visually stimulating the artist searches for the overlooked, camouflaged vision of the terrain. Stanislav Bartnikas explains: “Aerial photography gives me scope for creativity and innovation. In the city, we don’t often see the natural energy of the planet, but we can all feel that energy through these images and appreciate the beauty of nature. In the past few years, I traveled dozens of countries actively looking and capturing the breathtaking natural places of power below by boarding light aircraft and helicopters wherever I went. I wanted to capture the energetic details and picturesque scenes perfected by Mother Nature. Each impactful image encapsulates and conveys our planet’s untouched beauty, vibrant energy, and uniqueness. My role as a photographer and a human on this planet is to capture the most extraordinary and powerful places on Earth and share its essence with the world.”

Artistic, compassionate and talented are traits that make Stanislav Bartnikas a brilliant aerial photographer. His internationally acclaimed portfolio speaks volumes about his capabilities. Originally based in Moscow and now living in the United Arab Emirates, he began his career as a correspondent after graduating with a Journalism degree from Moscow State University, working with one of the leading newspapers in Moscow. Over the years, Stanislav’s exceptional aerial photography has earned him global recognition, and his “Aero-Art” shots have been published in magazines across Russia and Europe such as Sunday Times Travel Magazine, Maxim, GEO, Vanity Fair, Bild, View, L’official Voyage, as well as being featured in National Geographic’s Photo Of The Day and Daily Dozen rubrics. Winner of multiple prestigious awards such as Natgeo Photo Travel, IPA, TIFA, MIFA, PX3, Siena International Photo Awards, he is currently a contributor for @Natgeoyourshot. Beyond public showcases, Stanislav Bartnikas’ photographic marvels have found their way into numerous privately owned collections, where they are cherished as prized pieces of visual photographic brilliance.





145 Hidden Garden 2  
Acrylic on Canvas  
35.5" X 27.5"



# Teresa Bellini

Galvanized by Arshile Gorky's philosophy: "Abstraction allows man to see with his mind what he cannot physically see with his eyes... Abstract art enables the artist to perceive beyond the tangible, to extract the infinite out of the finite. It is the emancipation of the mind. It is an explosion into unknown areas." Expressing an inner world, Italian artist, Teresa Bellini's elegantly soulful and evocative abstract paintings offer a unique and distinctive modern vision which reflects the motion of inner forces. Aligning her expressionist abstract oeuvre with this sensibility, Ms. Bellini offers a visceral parallax vision of the world which radiates powerful energy, intermingling the psyche of the organic terrain. Replete with emotive expression, her mesmerizing and sensitive non-objective compositions mirror an alluring mystique combined with an air of the mystery and wonderment. By inviting viewers to explore the intricacies of the human experience through a kaleidoscope of vibrant colors, bold strokes, and intricate textures. Ms. Bellini's distinctive technique involves a delicate interplay of form and chaos, resulting in compositions that are simultaneously harmonious and dynamic.

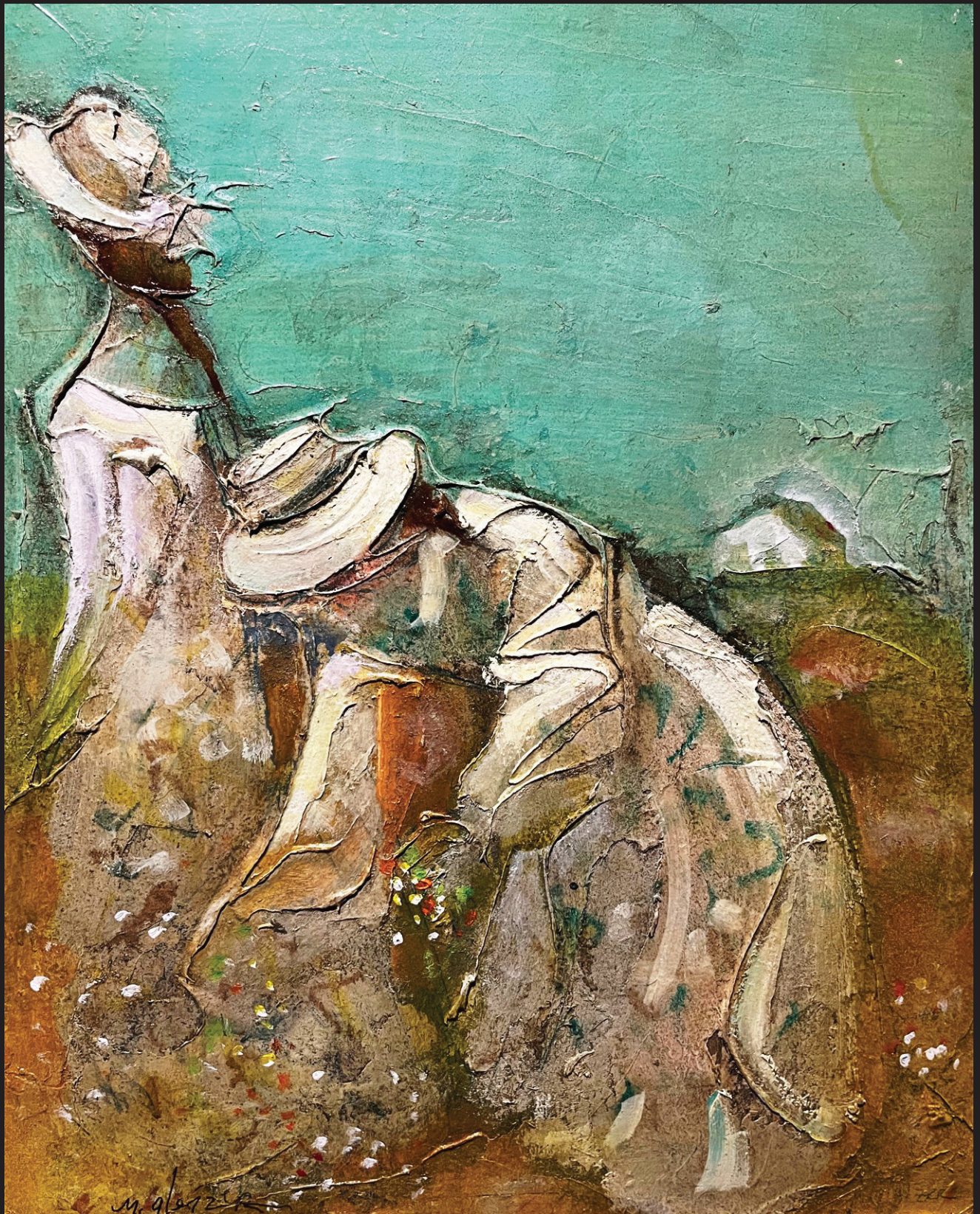
Organically encapsulating divergent visions of the natural world, Teresa Bellini invites us to spiritually commune with the terrestrial and the extra-terrestrial realm. Creating a gentle aura of awe, her lyrical abstract oeuvre results in an intense and sensuous experience with our inner horizons. As she searches for nature beyond the reality of our senses, she seduces the viewer to contemplate a myriad of emotions regarding their relationship with the world. In our digital, technological universe, where changes are occurring at lightning speed, Ms. Bellini shifts the visual dialogue inward by asking the viewer to put away their techno-devices; to slow down and take the time to view the world around them, and to think about their emotional relationship with one another and nature.

Highlighted by a high level of painterly sophistication, her non-objective oeuvre virtuosically applies paint onto the canvas resulting in a nuanced texture of tones. Cascades of paint create dazzling surfaces and it is this visual dynamism that rushes through the picture plane, saturating the audience with an exuberant burst of ethereal hues. Multivalent color planes interweave, juxtapose and collide into analogous forms, all the while ascending the two-dimensional space through topographical layers of richly applied brushwork. Essential to the impact of these images is the exhilarating expressivity of color as a visceral chromatic drama permeates her compositions. Alluringly captivating one's senses, she employs a carefully selected subdued color palette to challenge the viewer's imagination and emotions.

Elegant and sophisticated, there is a gorgeous spontaneity contained in her compositions, offering a beautiful understanding of the world. Each composition creates a narrative in and of itself that is open for interpretation. By transcribing a syntax of lines, colors, shapes and rhythms, she entices our senses and stimulates our curiosity. Emotionally charged, the subtle tonal transitions intermingled with an evanescent play of warm hues against cool tones, provide astonishing richness and depth to the shadows and vibrant luminosity. A melodic and chromatic use of softly hued tones imbued with the fluidity and energy of her technique, enable her to underscore the effects of luminescent light.

Internationally recognized for her artistic achievement, Teresa Bellini's masterful paintings have catapulted her to national and international recognition to become one of the most celebrated artists of Europe. Brilliantly translating onto canvas with a syncopated beat the magnificence of nature, award-winning painter she has participated in a lifetime of immersion in the arts, culminating in an outstanding body of work. Currently residing in Italy, she has been honored to participate in prestigious exhibitions in Italy, France and the U.S. The presence of her works in prestigious collections across the world is affirmation of her continually expanding reputation.





Summer  
Mixed Media on Cardboard  
14.5" X 11.5"



# Michael Gleizer

Anton Chekhov observed: “An artist’s flair is worth more than a scientist’s brain.” Synergically aligned with Chekhov’s wisdom is international artist, Michael Gleizer, whose incandescent female figurative, post-impressionist paintings are spectral optical reveries which ignite human consciousness into thoughtful contemplation of universal desires, emotions and experiences. Like a Chekhov’s play, Michael Gleizer invites us to magically re-wind history when times were gentler and more tender as he introduces us to the glimmering world of his intriguing artistic vision. Alluring and enticing, the illuminated fluidity of his enchanting female figurative silhouettes gently reveal personal and subjective emotional reactions providing his audience with a window into the complexity of his poetic ideas and intelligence. With a chimerical female iconography that allegorizes love, sisterhood and beauty, the alchemy of life is imperceptibly perceived as Michael Gleizer opens sensorial portals to fresh perspectives of femininity, love, life and human relationships.

Capturing the celestial dynamism and magnetic energy of female reverie, his sun-kissed canvases with their azure blue skies and gossamer women reflect an illusory realm in which a creative mind can interpret the world and transmute it into masterful works of art. Imbued with imagination and fantasia, he skillfully re-contextualizes a dreamlike world with striking, undulating dancing human figures whose mysterious imagery whispers romance and intrigue. Notably portraying lyrical female silhouettes, his playful dance of swirling forms celebrate the female realm with gentle female forms who are enjoying the summer sunshine and the radiance of summer.

Fantasy and whimsy intermingle with skillful, exacting artistic technique as romantic, floating, sensual female faces and silhouettes enchantingly resonate in his visual allegories. Alluringly communicating the mysteries of women, this spectrum of magically fantastical feminine figures become stylistic metaphors symbolizing the feminine mystique. Imbuing his evanescent compositions with a beguiling blend of post-impressionism, his creative spirit fuels these figural works with a breath of life and vitality, as his sensorial realm is emblematic of a rich experience and tradition emanating from his cosmopolitan, international background.

Fluidly interweaving colored, curvilinear female silhouettes into expressive canvases, a panoramic story unfolds, heralding a deeper universal symbolism. Expressing the inner depths of limitless emotions through the dynamic beauty of the physical female form, Michael Gleizer is intrigued by the psychology of his subjects as he creates a spiritual visual narrative. Through his visceral canvases, he sees many stories within a story, inviting the viewer to create his or her own interpretation. Hidden emotions are reflected through the natural beauty of the female face and figure, as his luminescent canvases are built up through layers of highlights and dark shading. By illuminating the female figure, sensual visions of spirited female forms radiate an untold story.

Timeless and eternal, his illusory figures transcend the canvas swirling and dancing, framing a visual symbiosis between energy and form. His magical oeuvre is a reverie of imagery of illuminated figures in harmony, a vision of the human landscape as universal and mutual – presciently envisioning and illustrating moments of universal consciousness. Born in the Ukraine and residing in New York, award-winning artist Michael Gleizer is internationally acclaimed, and has globally exhibited his artwork in group and solo exhibitions. Treasured in many public and private collections world-wide, Amsterdam Whitney Gallery is proud to shine the spotlight and showcase the artwork of this cosmopolitan contemporary master.





Fading Feelings  
Acrylic on Canvas  
18" diameter

# Deepa Kulkarni

Wassily Kandinsky mused: “The more abstract its form, the more clear and direct its appeal.” Illustrating this principle is the striking abstract oeuvre of Deepa Kulkarni whose floating gestural, non-representational forms tell an exciting visual story. Employing minimalist artistic language integrated with pure geometry, Ms. Kulkarni’s abstract paintings are created with the beauty of shape which reflect an aesthetic expression channeled through precise design elements. Amplified by geometric shapes that seem to move and interact with one another, each shape possesses a fluidity that serves as a catalyst for fresh perspectives and ideas.

Inviting the viewer on an artistic journey of sensory exploration, her inner artistic vision focuses primarily on the boundary between what is internal and external, posing a perceptual visual riddle. Thus, the play with geometrical elements, which may at first sight seem more like a search for the perfect combination of colorful solid geometrical bodies, acquires an altogether different visual vitality. Drawing inspiration from the depths of human emotions, Deepa Kulkarni’s abstract art is a testament to her unique ability to translate complex feelings into visual masterpieces. Aiming to capture and convey the depth of her emotions through her art, each brushstroke is a deliberate step towards capturing the intangible and making it tangible, allowing viewers to connect with the artwork on a deeply personal level.

Boldly and firmly embracing her individuality as an artist, Deepa Kulkarni’s abstract oeuvre is known for its highly disciplined art form and dazzling precision of craftsmanship. Existing on its own aesthetic terms, her elegant compositions reveal an energized spatial composition which explores dimensions through simple shapes which are juxtaposed against expressive color. Contrasting organic forms create complex relationships which overlap within an abstracted dynamic background, and there is a subtle change of color and density as she intermingles combinations of colors tones to create diverse image variations. Illusions of close color coalesce with considerable finesse and her spectral colors exist independently in space, without altering the over-all forms of the surface, or the complexities of the structure itself.

With a contemporary visual vocabulary, Deepa Kulkarni’s exciting oeuvre manifests the dynamic geometric placement of colors and shapes in a carefully controlled aesthetic environment. Building an atmosphere with simple, clean lines and limited blocks of color, this gifted artist utilizes the rectilinear and organic shapes in hues. By transforming the geometric simplicity of shapes into complex spaces with bold, colored forms, design comes together to create a kinetic image where line, color and form coalesce and float freely in space, creating a complex relationship between the individual elements and the overall composition.

Redefining the boundaries between creativity and emotion, Deepa Kulkarni’s masterful work fuses a visual harmony where colorful, sharply controlled, angular shapes are intermingled with profound expression within a rhythmic spatial composition. The award-winning artist Deepa Kulkarni works and resides in Mumbai, India and has exhibited internationally as well as nationally with exhibitions throughout the world. Her art is housed in many public and private collections and Amsterdam Whitney Gallery is proud to showcase the art of this leading global artist.





Spring  
Acrylic on Canvas  
100" X 70" cm (39.3" X 27.5")

# Peter Mages

“Creativity takes courage” declared Matisse. Inspired by this credo, Peter Mages’ surrealist fantasy paintings visually manifest the ways in which a creative mind can interpret the world and transmute artistic visions into masterful works of art. Translating the fantastic dimension of reality, Mr. Mages creates his own unique realm, fusing the visual vocabularies of surrealism, figurative along with abstraction, drawing inspiration from life and dreams. By inviting the viewer into a kaleidoscopic world with illusory figures dancing just on the edge of definition, he allows us to decide where one image ends and another begins. Breathtakingly imaginative, each canvas reveals a powerful, expressive vision, resonating with a distinctive, dreamlike aura.

Speaking in languages both iconographic and purely visual, the centrifugal force of Peter Mages’ visceral compositions chromatically swirl around his innate ability to externalize an internal world and inner emotions, which mirror visions of the innermost syntax of the human soul. Color and line work in concert to create a kinetic force, a sense of movement that is hard to replicate and imbue upon two-dimensional imagery. An inner voice resonates as he juxtaposes divergent figurative distortions and symbolic dislocations. Oscillating between these diverse artistic traditions, his oeuvre explodes as a metaphor for the complexities of cross-cultural life’s experiences.

Orchestrated with surreal figures, Mr. Mages’ oeuvre represents the language of feeling and emotion emanated from our soul. Employing a colorful chromatic palette featuring surreal colors and an indefinable treatment of space, his dazzling paintings investigate the relationships of colors interacting with one another. A keen eye for color, texture, and design result in an imaginative body of work which produces dreamlike imagery that seems to sprout from the canvas. Allowing himself the freedom to use many different types of inspiration, his otherworldly transfigurations represent art knowing no boundaries.

A portal to cerebral vision, Peter Mages’ multi-layered compositions conjure otherworldly beings, providing an intimate tete-a-tete with the inner workings of his creative heart and soul. Ethereal amorphous figures float in a symbol-laden elusive, wondrous vista reflecting a vortex of emotions. These terrestrial and celestial paradoxical silhouettes result in works that capture life’s essence, but also fulfill the artist’s goal of transmitting a feeling of wonderment. Winding intersecting lines and bold shapes create powerful labyrinths, taking the viewer’s eye on an involving and enveloping journey reverberating with a high degree of complexity as well as an arresting simplicity.

In Peter Mages’ hands, the external world assumes the contours of a dream, and the strength of his work encourages us to dream along with him. Visually arresting and highly original, Peter Mages cajoles viewers to celebrate his unique visceral vision as he expresses his individual thoughts on the universe. Bright, powerful, and joyous, this German born artist, is world renowned and his artwork is showcased in both private and public collections both internationally and nationally. The Amsterdam Whitney Gallery is delighted to shine the spotlight on this rising global star!





Yes, Please  
Acrylic & Gouache  
19.7" X 23.6"



# Natha

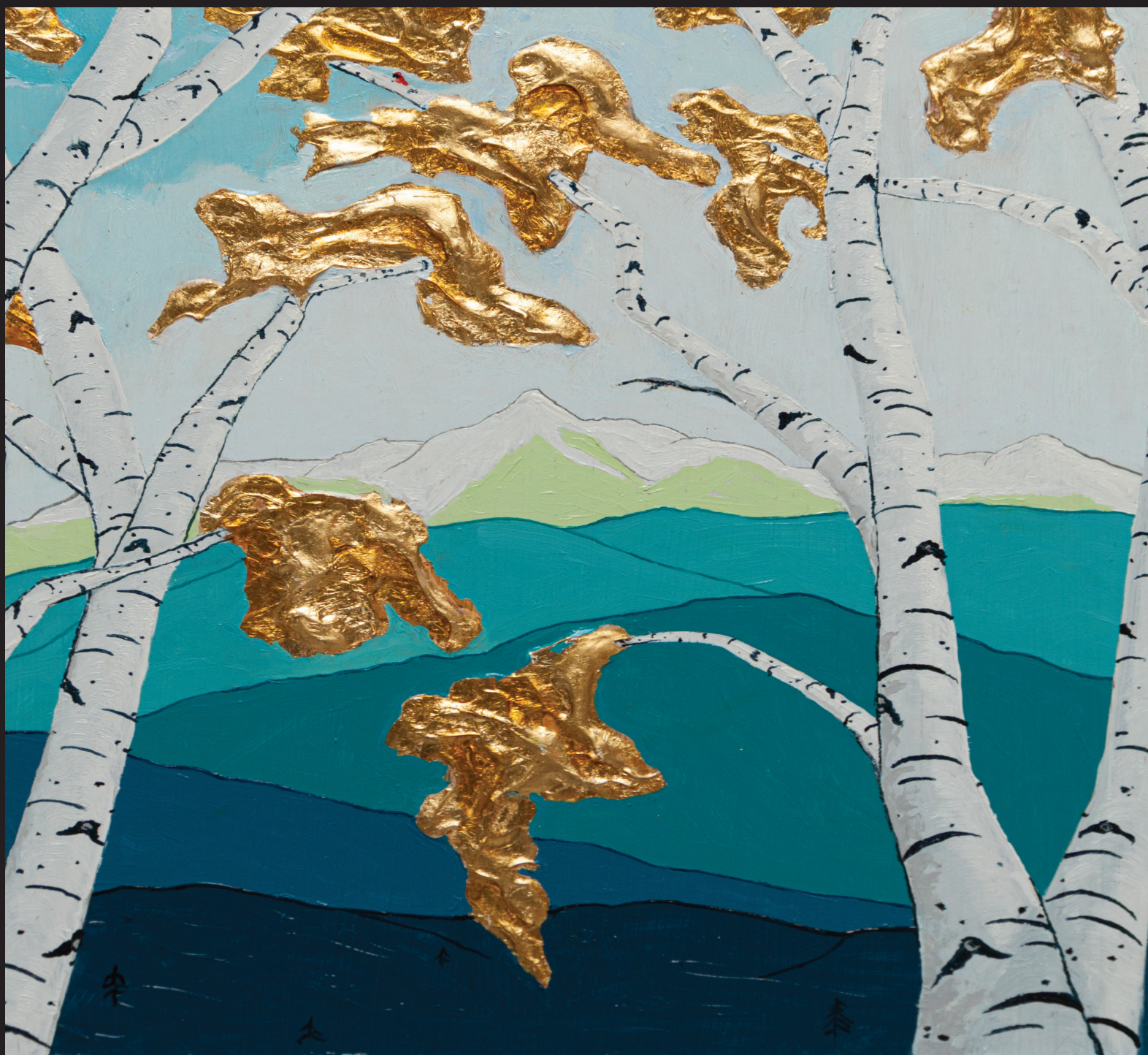
Galvanized by the Surrealist master Rene Magritte's statement: "Art evokes the mystery without which the world would not exist," Thai artist, Natha, explores the boundaries of the world through surrealist reveries. Paradoxically intermingling images of humankind and nature, she intertwines one image with another. Re-conceptualizing our world, Natha creates a new visual syntax which draws inspiration from the mysterious realm of nature. Her labyrinthine paintings are portals to a cerebral vision, as fantasy opens doors to phantasmagoric worlds where figures and landscapes are fully imbued with divine imagination. Not endeavoring to depict things as they are in this world, Natha encapsulates what she feels or imagines they might be in some other world. Free of boundaries, unexpected results produce wildly imaginative characters and whimsical gestural creatures, who convey a sense of the mystery of life.

Blending the fantastic with the real, Natha's magical oeuvre articulates the vortex of inner visceral human emotion. Her dream-like forms conjure mystical apparitions which evoke a spellbinding sense of intrigue and fantasy as they metaphorically transcend the distractions of everyday life. Kinetic and gestural, her unique artistic vision explores the chimerical interaction of humans' fanciful wonderment with the natural world. Stunning and clever, her subject matter consists of both figurative silhouettes and sublime vistas which are transfigured through the unbridled depths of the imagination, where creativity reigns supreme and exhorts fantastical newfound imagery. Striking and sophisticated, her visually stirring otherworldly compositions breathe life into her enchanted dream-like dioramas.

Interested in expressing the natural contradictions that arise during creation and the epic journey, Natha's palette investigates a wide range of hues, juxtaposing and intermixing to create expressive, organic forms.. A marriage of organic line work and opulent saturation reflect brilliant energies of rekindled coloration. Dramatic chromatic tones are illuminated by stark lighting, which heightens the visceral quality of her expressionist emotional vistas. Achieving a full spectrum of dazzling hues, Natha's palette showcases the mastering of her medium. Replete with the fantastic, her unexpected personal touches of pattern and transparency elevate the colorific elements of the surreal into the sublime.

Exceeding human limitations by expressing the mysteries of life, Natha's series elicits the awe-inspiring powers and beauty of our expansive universe. Evocatively expressive, Natha's art magnetically draws viewers inward, inviting intellectual and emotional contemplation. Free of boundaries, she articulates the essence of emotion and celebrates the human spirit. Born and residing in Thailand, this gifted, global, award-winning artist's mesmerizing paintings are acclaimed internationally. Amsterdam Whitney Gallery is proud to shine the spotlight on this rising star.





Mt. Adams  
Oil, Metal and Gold Leaf on Board  
20" X 16"



# John Peters

Gauguin declared: “I do not paint by copying nature... Everything I do springs from my wild imagination.” With dazzling improvisation and brilliant creativity, John Peters re-contextualizes Gauguin’s theory of recreating nature. His unique vision of Magic Realism landscapes transform nature into a magical wonderland, as he explores the effervescent energies and fleeting dynamism of the natural world. Through color saturated expressionist Magic Realism paintings, his artistic perspective resonates with luscious scenes of the flora and fauna kingdom. Sharing a co-relationship with Mother Nature, John Peters invites us on a mesmerizing journey to a world where reality and enchantment are intertwined through his artistic mastery. A testament to his unique ability to blend the ordinary with the extraordinary, John Peters’ latest collection showcases his unparalleled talent for infusing natural landscapes with a touch of magic. Each spectral composition is a window into a dreamlike realm where nature’s beauty is heightened and reality takes on a surreal quality.

Known as the “Master of Gold Leaf,” John Peters’ golden palette brims with vivid celestial colors and intricate details as his masterful use of sun-kissed light and shadow create an otherworldly atmosphere, drawing viewers into a world where the boundaries between reality and fantasy blur. Shimmering with metallic gold color, punctuated by radiant shapes of neon color which bolt across the picture plane, he encourages us to have a reverence for nature. Celebrating the technicolor alchemy of the terrain, his powerful employment of the color wheel presents the viewer with a series of intriguing dualities that seem to float in space between reality and illusion, the finite and the infinite. Through the alchemical properties of paint, his spellbinding paintings articulate the visceral nature of perception which symbolize the positive energy of Mother Nature.

Accentuated by a kaleidoscopic color palette, swirling brushstrokes and undulating forms, John Peters’ billowing expressionist paintings capture visions of earthly delights which radiate superlative color, light and composition. This brilliant coloration illuminates the landscapes with rhythmic energy as he richly transposes the majesty of nature onto his canvases. Intuitively bursting with sizzling energy, his oeuvre champions shimmering colors which reinforce his dioramas of Magical Realism. Singing with anthropomorphic vitality and vigor, he choreographs the terrain through the framework of color shape and contour as he showcases the environment in relentless flux. By capturing the world with unapologetic shapes and an unabashed polychromatic tones, he provides both a contextual source of information, as well as a symbolic significance which radiates the mood of the environment. Within this pulsating interplay of color, texture, line, and shape, there is always a signature expression that identifies each work as distinctly as a “John Peters’ painting!”

Evanescently enchanting, his enthusiastic exploration of nature expresses the brilliance of our terrain as this virtuosic artist surprises, delights and invites the viewer to inhale the joy of our world. These opulent paintings play with the extraordinary acclivity of the environment showing that in its magnitude of glory, nature can be positively enhanced through the artist’s trained eye. Not only visually stunning but also thought-provoking, John Peters’ spellbinding exploration of magic realism invites viewers to contemplate the mystical qualities inherent in the natural world. Visually accentuating the profound connection between humanity and the environment, this celebrated artist is renown for his captivating works in the genre of magic realism. With a deep appreciation for the natural world and a passion for blending reality with enchantment, Mr. Peters creates art that transports viewers into a dreamlike realm.

Atmospheric and otherworldly, John Peters’s brilliantly illuminated illusory dioramas render a divine manifestation of a golden painted world. His magical artistic vision of the terrestrial majesty of nature allows his paintings to transcend reality to become celestial dreamscapes of fantasy. Reflecting the supremacy of the topography of the land, his innovative heavenly perspective catapults John Peters to the contemporary master realm. The award-winning painter has participated in a lifetime of immersion in the arts, culminating in a outstanding body of work which has ascended him into a meaningful position in the contemporary art arena. Active with the Detroit Institute of Art, Mr. Peters is also a noted author of several art books. This masterful artist has enjoyed numerous successful exhibitions the U.S., as well as in Europe and has become a collector favorite in international art world.





Bird with Vase  
Oil on Canvas  
36" X 24"

# Shao Ren

“Art comes from everywhere. It’s your response to your surroundings,” declared Damien Hirst.

Responding to this observation is Asian-American artist, Shao Ren whose expressive semi-figurative paintings artistically align with this philosophy. Conveying a fantastical vision of East meeting West, contemporary artist Ms. Shao Ren captures dazzling reveries by presenting graceful, dream-like compositions amidst gem-colored, semi-abstract figurative dreamscapes. By integrating the visual vocabularies of surrealism, figurative along with abstraction, she creates a surrealist fantasy universe of her own. Drawing inspiration from life, her brilliantly hued chimeric world resonates with illusory figures who dance on the edge of fantasy, revealing a powerful, expressive vision. Resonating with a distinctive, dreamlike aura, her dynamic, amorphous figures float in a symbol-laden elusive, wondrous diorama reflecting a vortex of emotions.

Born in China and the daughter of a highly important Chinese artist, Ms. Shao Ren manifests the yin and yang of life. Now living in New York with her husband, JJ, Shao Ren’s creative exchange with the universe ultimately forms her own wondrous syntax on canvas. By balancing universal constants in order to create something new and spectacular, she expertly intermingles a varied kaleidoscopic color palette which is juxtaposed with bright and muted shades. Adroitly painting each image with a dynamic flow, she skillfully offers a keen eye for color, texture, and design, essentially providing an intimate *tete-a-tete* with the inner workings of her creative heart and soul.

Allowing herself the freedom to use many different forms of inspiration, Shao Ren’s chromatic transfigurations innovatively represent the complexities of human nature. Speaking in languages both iconographic and purely visual, the focal point of her exciting oeuvre centers around her own stylized version of the human figure. The compelling amalgamations of these diverse artistic traditions explode as a metaphor for the intricacies of cross-cultural life’s experiences as she invites viewers to celebrate her unique vision. With her visually arresting and highly original works, her visceral compositions express her internal world and inner emotions which mirror visions of the innermost syntax of the human soul.

Serving as a bridge between fantasy and reality, Ms. Shao Ren visually transcribes the deep heart’s core. Swirling forms and undulating polychromatic figures amalgamate to create an intense kinetic force. With a syncopated beat, she translates the fantastical dimension of reality. Creating her own unique realm, a rhythmic sense of movement imbues her two-dimensional imagery with a powerful expressive vision. Divergent figurative distortions and diverse symbolic dislocations resonate within her oeuvre as they explode to become a metaphor for the complexities of cross-cultural life’s experiences.

Creative and innovative, Shao Ren’s provocative oeuvre is a spectral joy to behold, replete with mystery and intrigue reverberating with each curve and brush stroke. In Shao Ren’s hands, the external world assumes the contours of a dream, and the strength of her work encourages us to dream along with her. Visually arresting and highly original, Shao cajoles viewers to celebrate her unique visceral vision as she expresses her individual thoughts on the universe. Bright, powerful, and joyous, this Chinese-born- New York based artist is world renowned, proudly carrying the artist heritage and honorable legacy of her famous father, Shao. Showcased in both private and public collections both internationally and nationally, the Amsterdam Whitney Gallery is delighted to shine the spotlight on this important global star!





Nelson Mandela  
Print on Canvas  
17" X 10"

# Miguel Ribeiro

“In my view you cannot claim to have seen something until you have photographed it,” proclaimed Emile Zola. Lens-based artist, photographer and visual narrator, Miguel Ribeiro’s unique “third eye” shines the spotlight on his subjects, navigating the audience to view life through the prism of his camera. Guided by his lens, the Portuguese-based artist and doctor encapsulates the essence of the world with his unique artistic perspective and keen vision for detail. Transcending traditional photography, Ribeiro transports viewers into the very heart of reality of his subjects with photographs that are not just compelling images, but provocative visual narratives.

From the powerful portrait of a physically abused woman to colorful still lives to serene landscapes resounding with the untouched beauty of nature, Miguel Ribeiro’s portfolio is a testament to his diverse range and mastery of his craft. With each click of the shutter, he manages to freeze moments in time, preserving emotions, stories, and atmospheres in a single frame. Consistently demonstrating an innate ability to anticipate decisive moments along with an unwavering dedication to his craft, his photographs not only portray the external beauty of his subjects, but also delve into their inner worlds.

With the belief that photography is a powerful medium that allows us to communicate emotions and stories that words often struggle to convey, Ribeiro’s goal is to evoke a sense of connection between the viewer and the subjects. Whether it be the harmony of a quiet landscape or the raw emotion of a human face, Miguel Ribeiro continues to push the boundaries of visual storytelling as he illustrates stories that go beyond the surface.

Encapsulating life’s most poignant moments, the Portuguese artist Miguel Ribeiro’s photography is a testament to the truth and reality of the complexity of the human experience. Resolute in his belief that the camera is a powerful medium that aids us in communicating and connecting with the world on a deeper level, his goal is to capture the fleeting moments that often go unnoticed, to tell stories through visuals, and to create a lasting impact through his art. Featured in prestigious galleries, exhibitions, and publications around the globe, his ability to evoke a wide range of emotions through his photographs has earned him a dedicated international following and numerous global accolades within the photography community.

Author of the recently published book, “Beyond Darwin,” Medical Doctor and lens-based visual story teller, Miguel Ribeiro is recognized for his ability to find truth and beauty in the ordinary and to evoke emotions through his images. Numerous accolades and recognition from both peers and industry experts have spearheaded his renowned career. Gracing the pages of renowned photography magazines and books, his photography has been exhibited in international galleries around the world. Amsterdam Whitney Gallery is proud to shine the spotlight on this beacon of light!





Butterfly Nectar Chase  
Print on Canvas  
18" X 27"



# Robert Swedroe

Sharing an ideological affinity with Ralph Waldo Emerson who declared: “The sky is the ultimate art gallery just above us,” internationally renowned architect and Florida-based artist, Robert Swedroe calibrates a new aesthetic perspective which reflects the sublime divinity and majesty of nature. Whether designing architectural buildings that dominate the Miami horizon, or painting canvases with reverberating skies that resonate with kaleidoscopic butterflies, his chromatic compositions convey the universal beauty associated with the universe. With nature as his muse, he achieves a delicate balance between the earth and the sky, the roots of the land and the wings of heavens. These spiritual inner and outer horizons illustrate the miracle of the natural world and reverberate emotions.

Feet on the ground and paintbrush poised to the sky, contrast and contradiction are omnipresent in Robert Swedroe’s skiescapes. Deft, light brushwork is employed to depict the drama of nature, which, in turn, is contrasted and mirrored with lyrical coloration. By creating these juxtapositions, he underlines the kindred spirit between our terrestrial realm and the spirit of the environmental. Echoing the organic kinship between the power and the fragile beauty of the natural world, his oeuvre reveals that nature is intensely vulnerable, and interconnected to the actions of humans. Underscoring the emphasis on the spiritual connection between the heart of man and the forces of nature, he gloriously captures the ever-changing magnificence of the natural terrain and cajoles us to treasure the bounties of nature.

Sensorially employing the leit motif of soaring butterflies who symbolize transformation, growth and spiritual evolution, Robert Swedroe’s oeuvre represents a journey of self-discovery and personal transformation. Particularly emphasizing glowing, luminescent yellow butterflies to symbolize positivity and happiness, his ethereal art is a sanguine ode to the natural beauty of our environment. Through the tranquil imagery of his mosaic butteries, he joyfully encapsulates the ephemeral essence of nature as he channels his unique artistic vision. Fluidly integrating a cavalcade of the color wheel with topographical layers of richly saturated brushwork, his masterful compositions, germinate into modern conversations on the eternal quality of life. By bridging the earth and the sky, his evanescent skyscape paintings capture the spirit of hope, renewal and eternity.

Transcending time and place, this visual caravan of color and form illustrates the atmospheric effect of nature. While exalting the enchanted kingdom of the terrestrial realm, Robert Swedroe focuses our vision on a moment of serenity, revealing a celestial dance between atmosphere and light. Painting with an intuitive and softly expressive brushstroke, his rainbow palette evokes the ever-changing complexion of the landscape with an ethereal immediacy. Expertly accentuating color as a sensation, his super-blooming colors catapult his dreamtopian compositions to a higher realm, as he juxtaposes bright and muted shades to guide each image with an incandescent, dynamic flow.

Orchestrating a poetic visual experience of the external universe, his oeuvre reflects a visual harmony of color and composition, offering a luminescent record of the fluidity of nature. Influenced by luminescent creativity, his sublime vistas endeavor to capture the fleeting moments of the natural terrai. Contextualizing the positive elements of the wonderment of life, Robert Swedroe invites vewers on a artistic odyssey with spiritual dream-like reveries. Mesmerizing and brilliant, Robert Swedroe’s opulent canvases illuminate an inner terrain which evanescently resonates with masterful beauty. Timeless and inspiring, his oeuvre has earned him national and global recognition and his art is treasured in both international and national collections. Amsterdam Whitney Gallery is thrilled to shine the spotlight on this globally acclaimed art star!





Tempest  
Edition 1 of 9  
21" X 13" X 9"

# Charlotte Szynskie

Paying homage to the sculptor August Rodin who advised, “The semblance which one ought to obtain is that of the soul,” Colorado sculptor, Charlotte Szynskie converges form, motion and craftsmanship to create unique figurative bronzes that seem poised to soar in the air and step off their bases. Drawing inspiration from Rodin’s philosophy which celebrates the human form and soul through the medium of sculpture, Ms. Szynskie’s bronze figurative sculptures capture the deep heart’s core of her subjects. As she incorporates sublime beauty into her emotional, contemporary works, she adroitly demonstrates an unmatched technical ability and an exceptional creative spirit. Deftly breathing life into her bronze figurative sculptures, from the subtle curve of a smile to the dynamic tension of a poised figure, she infuses energy and excitement to the bronze, anointing them with a personality as they transcend their physicality.

Imbued with a distinct narrative, the artist’s unparalleled attention to detail and devotion to capturing the human spirit are evident in every piece, inviting audiences to explore the nuances of emotions and stories told through sculpture. Weighty and forceful and resonating with expressive curves, Charlotte Szynskie’s bronze figurative sculptures are sweeping and graceful. “Sculpting gives me the ability to bring figures to life,” she says of her inspiration and her artistic process. With her skilled hand, the Colorado-based artist is able to create her subjects in a harmonious combination of the perfection of the past and the emotion of the present.

With her brilliant artistic vision, Charlotte Szynskie is able to conceive beautiful shapes and reveal their inner soul within the formless bronze. Unveiling these shapes through her chisel and keen eye, she explains: “The beauty, strength and fluidity of the human body captivates me. My sculptures show this in a realistic figurative style. Some of my sculptures depict challenging acrobatic poses of bodies in motion. Capturing the range of human movement and expression is a wonderful challenge. I love being able to share my intrigue with the human figure. I get an idea in my mind and I dwell on it until it comes out of my hands in clay.” Transformative and reflective, her figurative sculptures reinforce the idea of balance with smooth movement.

Manifesting the independent inner pathos of her subjects, she reveals herself to be a master of the corporeal language of the body. As she calls our attention to their underlying unity, her skilled chisel dictates the shape and meaning of the human form. With a physically complex structure, Ms. Szynskie creates compelling three-dimensionality as her spiraling, defined lines envelope each floating form, enhancing a resilient quality to each subject. Experimenting with a variety of ascending poses with her earth-bound figures who are about to glide into space, she is especially gifted in portraying subjects who are ready to leap into the air and take flight. A visual counterpoint to this artistic vision, she harmonizes the precise dramatic curves with smooth clean forms which burst forth with dazzling vitality. Revealing brilliant levity, fluidity, and emotion, she harnesses dynamic earthly forms leap to the heavens. Drawing strength from the soaring poses, each composition reflects a unique and personal artistic imprimatur as the detailed finishing reveals the perfection and care devoted to each piece.

Uniquely conveying a magical fusion of three-dimensionality through the body language of her organic bronze sculptures, Charlotte Szynskie beautifully intertwines a distinctive narrative and a compelling aesthetic. Her undulating sculptures allow viewers the space for their own contemplation as she masterfully transforms bronze into an unyielding passion for silhouettes.

Imbued with great resolve, there is a symbiosis of emotional connectivity between the viewer and the art, as we delve into the deep heart’s core of each work. Twisting and curling with organic fluidity, her work emerges as forceful masterpieces, conveying strength and power. Exhibited in private collections and art publications nationwide and Europe Charlotte Szynskie is continually expanding her reputation as a master sculptor and this renowned master’s sculptures are treasured in both public and private collections.





And Your Time Came In The Moon  
Oil and Acrylic on Canvas  
30" X 30"

# Smokey Thomas

Emotionally and artistically energized by Cezanne's philosophy, "A work of art which did not begin in emotion is not art," New Mexico artist Smokey Thomas' visceral, abstract canvases invite viewers to explore emotions through the expansive possibilities of a visual, non-objective language. With the quest to transcribe onto canvas the non-representational, her divergent realities of shape and color are transcribed to a complete fulcrum of expressive sensations. Resonating with the verve of abstracted vision, her masterful tableau resonates beyond the interplay of colors and textures, as each composition provides a glimpse inside the human condition. Gestating into a sensory experience, Ms. Thomas' powerful expressionist work illustrates the emotional essence of the natural world and invites us to imaginatively connect with the universe.

By investigating the deeper truths contained within humanity, the genius of Smokey Thomas' oeuvre is her translation of this ongoing dialogue of humankind. While engaging in an artistic conversation with the world, her wish is to discover the meaning behind the three-dimensional mask that is human existence. Powerfully challenging the boundaries of conventional art, she viscerally captures emotion and complexity through a fusion of vibrant hues, intricate textures, and dynamic compositions. Cajoling viewers to explore the dynamic interplay between imagination and reality, she evokes a sense of wonder and reflection. Her collection is a testament to her mastery of technique and her ability to communicate profound emotions without relying on figurative representation.

Transcending emotional horizons, Smokey Thomas' hope is that her art is meant to nourish and heal both the heart and soul. With the belief that abstraction allows us to tap into emotions and experiences that are often beyond words, her artistic manifesto is for people to feel an intense passion and kinship with the universe. Sensorially encapsulating the visceral experiences of the world, her emotive compositions recontextualize the dynamism of lived experiences and emotions, offering glimpses into social and organic stages of life. Reinforcing her reputation as a master colorist, her canvases are awash with a visual collage of emboldened colors and a hallmark of her oeuvre is her intensely expressive palette.

Reverberating with the power and variability of the natural world, Smokey Thomas' visual reflections mirror our intersecting internal and external realms. Cajoling us to probe our own artistic sensibilities, her non-representational works are laden with meaning as she explores the emotional weight of our world. Dynamic and expansive, the common thread that runs throughout her oeuvre is to unearth new meanings for the viewer. Resisting conformation to a formulaic asymmetry, her gestural swaths of bold colors and brilliant plays of life transform into personal expressions of the inner self.

Infusing her emotive panoramas with an unseen provocative essence, this gifted artist's compositions are replete with an aesthetic vitality as her emotionally atmospheric paintings come alive with an energetic vibrancy. Serving as a witness to the persistence of pain within a turbulent world, her oeuvre demonstrates the ability to provide a visual message which responds to the direct sense of life. Acclaimed in the Southwest, Smokey Thomas has been featured in galleries and exhibitions around the world, captivating audiences with her emotional depth and striking aesthetics. Expanding traditional boundaries, she encourages viewers to explore the uncharted territories of human emotion and perception. Amsterdam Whitney Gallery is proud to showcase this rising star!





Robin in Garden  
Oil on Wood Panel  
22" X 28"

# Russel Vanecek

Following the artistic credo of Claude Monet who stated: “I would like to paint the way a bird sings,” renowned Missouri artist Russell Vaneck is recognized for his profound connection to nature which serves as the wellspring of his artistic inspiration. Through his ethereal landscape paintings which are dominated by fluttering birds, he aims to bridge the gap between the human experience and the natural world, inviting viewers to contemplate their place in the intricate web of nature.

Inspired by the beauty of nature and singing birds, his captivating collection reflects the intricacies as well as the harmony of the environment. Unveiling the spiritual essence of the universe, Vanecek’s canvases radiate and embrace the wonderment of the world. Characterized by a profound kinship to the environment along with a unique ability to translate the subtleties of nature onto canvas, he takes this visceral affinity to new heights. Presenting a series of artworks that unveil his deep reverence for the delicate balance of ecosystems, the poetry of landscapes, and the hidden stories within each leaf and petal and twirping bird, Vanecek believes that nature holds the key to timeless beauty.

Illustrating not only the visual splendor of the natural world but also reflecting the emotions it stirs within us, Russell Vaneck awfully reminds of our place in the grand tapestry of life. From the vibrant, almost luminous blue hues of the sky over an idyllic meadow, to the intricate brushwork that brings to life the delicate patterns of a twirping bird’s wings, each composition is a testament to his mastery. Translating the juvenescence and glory of nature, his illuminated compositions illustrate a spectral paradise on earth. Through the transcendence of color, his dream-like, majestic imageries are visual metaphors for the bounty of the terrestrial kingdom as he captures the essence of feeling at peace with nature.

Synthesizing his nature tableaux into a symposium of emotion and soaring color, Vanecek imbues his art with a kaleidoscopic color palette as he creates dream-like sublime visions of nature. With an innate sensitivity, this gifted artist’s oeuvre joyfully communicates the exuberant language of the landscape realm through undulating bursts of color.

Seeking solace in the beauty of the terrestrial world, Russell Vanecek’s breathtaking landscape panoramas serve as portals to nature. As he shares a co-relationship with Mother Nature, his compositions pay an extraordinary tribute to our environment. Cultivating a strong reputation in the art world, Russell Vanecek’s artwork is treasured in prestigious public and private collections. Amsterdam Whitney Gallery is delighted to shine the spotlight on this contemporary rising star.





Reflection  
Photomosaic  
28" X 35"

# Patrick Walsh

“A photograph draws its beauty from the truth with which it is marked. For this very reason I refuse all the tricks of the trade and professional virtuosity which could make me betray my canon. As soon as I find a subject which interests me, I leave it to the lens to record truthfully,” declared Andre Kertesz.

Visually responding to Kertesz’s theory is California lens-based artist, Patrick Walsh, whose outstanding photo mosaics translate his unique vision into resplendent photography. Patrick Walsh states: “My original works are not digital and not done in Photoshop.” Although the camera has one eye, Patrick Walsh’s “third eye” masterfully combines multiple images into one single celestial image. Illustrating how the camera can wondrously transform old film negatives into incredibly stunning works of art, Patrick Walsh’s “Lens and Light” noteworthy exhibition showcases the craftsmanship and creativity of this brilliant artist, leaving a lasting impression on the viewer. Paramount to his art are hundreds of individual photos which are shot and then placed together as a visual collage to create one single important image.

Extending his remarkable photographic medium into a painterly realm, Mr. Walsh regards himself a painter who uses his camera as a paintbrush for his visual photographic portals entitled Photomosaics®. Masterfully piecing together ruminations of his photographic inventory, his innovative compositions culminate into a flattened, captivating image reflective of a unique peripheral vision. “I’m creating a composition with multiple photographs and yet within those photographs there will be a beautiful one all by itself. I’ll put it into the mix. The overall impression is what matters to me,” says Patrick Walsh. “I want you to step into that picture, it’s like a window. I want you to feel you’re there.”

Patrick Walsh’s ground-breaking exhibition at Amsterdam Whitney Gallery entitled “Lens and Light,” offers a compelling journey through a myriad of perspectives, emotions, and narratives. as it encompasses a wide range of genres, from stunning landscapes and evocative portraits to thought-provoking conceptual pieces, all of which present an unparalleled blend of photographic artistry that transcends conventional boundaries. Each powerful visual narrative encapsulates a distinct tale, inviting viewers to delve into the creative mind of the artist and connect with the essence of his creative vision.

Derived from reality, Patrick Walsh’s Photomosaics® consist of a distinctive body of work which is artistically conceptualized in his mind and then manifested on photographic paper. Exercising a profound sense of subtlety, Mr. Walsh offers fragmented and compiled photographs to simultaneously obscure and reveal actualities. Presenting a new narrative with each composition, every image is entirely original. Meticulously ensuring that each Photomosaic® remains unique, he destroys his negatives upon completion. Appearing spontaneous, Mr. Walsh’s process is anything but, reflecting deep consideration of every location composition, which he revisits time again, often photographing hundreds of times, in order to achieve the perfect image. Like a painter, he controls the final appearance of his image, reflecting a fascinating interchange between observable scenes and his artistic sphere. Demonstrating extreme talent, Patrick Walsh’s spectacular photographs cajole us to reconsider and reconnect that which we see both in our world and in his dazzling realm.

Striving for perfection, a critically acclaimed, award-winning artist, Mr. Patrick Walsh has made a successful name for himself in the international art arena. Showcased in multiple noteworthy museums, influential galleries, and prestigious private collections as well as in the Baltimore Orioles’ and Los Angeles Dodgers stadiums, his world-famous Photomosaics® have achieved wide collector status. Furthermore, Ms. Walsh has enjoyed a distinguished career as a director and producer in the advertising industry. Winner of eight “Clips,” four “Cannes Lions,” an Emmy nomination, and two films in MOMA’s Permanent collection, Amsterdam Whitney Gallery is proud to shine the spotlight on this distinguished beacon of light in the world of photography!





Composition P  
Acrylic & Mixed Media on Canvas  
32" X 24"

# Gong Zhang

“To create a work of art is to create the world,” observed Kandinsky. Conceptualizing this abstract expressionism theory is Beijing-New York architect and artist, Gong Zheng, whose groundbreaking exhibition at Amsterdam Whitney Gallery features his remarkable mixed-media, abstract mixed media artworks. Internationally celebrated as a renowned architect, Gong Zhang’s creative genius has transitioned into the realm of abstract expressionism. Hailing from the dynamic cities of New York City and Beijing, Gong Zhang’s art is a convergence of cultural influences, timeless expressionism, and a profound admiration for Wassily Kandinsky’s visionary legacy. Evoking the invisible within the visible, he draws inspiration from calligraphy, traditional Chinese painting, architecture and abstract expressionism, manifesting it into a mesmerizing visual symphony that transcends conventional boundaries.

As he navigates the yin and yang of life, this international globalite merges his art into a convergence of east-meets-west cultural influences which resonate with timeless expressionism. Universally recognized as an esteemed architect, Gong Zhang’s artistic journey was sparked by his passion for art which led him to explore new avenues of creativity. Embracing the vibrant energy of New York City and the cultural heritage of Beijing, he delved into the world of abstract mixed media painting, infusing his architectural background into each captivating piece. Also paying homage to the art of calligraphy and traditional Chinese painting, his work embraces the fluidity of ink and brush strokes to create a rich visual language that speaks volumes. The seamless fusion of these diverse elements allows his art to explore the tension of opposites; the stark contrast of black ink painted across the negative, open spaces and fields of color. Often employing varied shades of black and dazzling gradations of color, his works, through juxtaposition and transparency, have an extraordinary effect suggestive of celestial realms

Reflecting a world of boundless imagination where colors dance in harmonious rhythm, and textures beckon viewers to immerse themselves into his captivating realm, Gong Zhang’s compositional choreography employs gradations of color. Replete with a dazzling color palette accentuated by thick black strokes, his optical sensations synthesize into the perfect aesthetic environment where color and movement crystallize to create entirely new abstract vistas that invite the viewer to look beyond what is seen. Aesthetically and spiritually transcending the natural world, his captivating non-objective works are anchored by dynamic lighting and the notion of movement is compellingly conveyed. Through color contrast and transparency, celestial

Influenced by the expressive spirit of Wassily Kandinsky, Gong Zhang’s art transcends mere representation and ventures into the realm of emotions, inviting observers to contemplate the intangible facets of the human experience. Free of boundaries, his paintings evoke emotion as he transcends everyday reality to create a world characterized by a poetic economy of expression that can be alternately transporting and meditative. Viscerally transformative, his organic oeuvre highlights the intensity of the human emotive experience, passionately fusing forms into rich, expressive layers of paint which metamorphosize into mesmerizing compositions. Imbued with an emotional visual vocabulary of spiritual revelation, he communicates his unique artistic vision of vibrant parallel realities. Intellectually and emotionally, he magnetically draws viewers to inward contemplation with masterful paintings are free of boundaries.

Celebrating artistic diversity, Gong Zhang’s art is a testament to the timeless nature of artistic expression ability. cultural fusion and the enduring spirit of creativity. Bridging the gap between the intangible realm of emotions and the tangible world of visual art, he draws inspiration from both Eastern and Western traditions and merges them into captivating abstract masterpieces which resonate with audiences across the globe. Cosmopolitan and urbane, this artistic master’s free-flowing compositions do not need words or figures to convey his visual vocabulary of emotion and feeling. Infused with a unique level of drama and intensity, his visceral non-representational oeuvre invites the viewer to connect intimately with his art as he reveals the invisible within the visible. Internationally celebrated, this gifted, award-winning artist’s mesmerizing paintings have been exhibited on three continents, including Asia, Europe and the U.S., and are treasured in both public and private collections worldwide. Amsterdam Whitney Gallery is proud to shine the spotlight on this Contemporary Master.



# CHELSEA COSMOS

## September 9th- December 9th 2023

AMSTERDAM WHITNEY GALLERY, 210 Eleventh Avenue-Chelsea, New York City, is proud to showcase its SEPTEMBER 9-DECEMBER 9, 2023 “CHELSEA COSMOS” Exhibition featuring award-winning, leading contemporary artists whose acclaimed works explore the abstract, figurative, and natural worlds. This Autumnal nexus of enchantment exhibition, highlighted by the glamorous “LA VIE MAGIQUE !” Champagne Soiree on SATURDAY, SEPTEMBER 9th from 2:00-4:00 pm, invites the artists and guests to “Paint the Town Pink,” offering a mesmerizing elixir of the arts which will captivate the senses of both art acquirers and art aficionados alike. Pulsating with a charismatic vortex, these artists’ sophisticated, eclectic, and often joyful representations of life provide a visual syntax of our world. Their hypnotic canvases and sculptures explore spiritual emotions as they synthesize a cornucopia of imaginative artistic visions and stimulate visceral sensations.

SEPTEMBER 9-DECEMBER 9, 2023 “CHELSEA COSMOS” EXHIBIT

Saturday, SEPTEMBER 9, 2023, 2:00-4:00 “La Vie Magique” Champagne Soiree

NANCY BALMERT, “Ambassador to Nature,” and “Queen of the Flowers,” illustrates the eternal essence of the floral and still life realm with her old-master inspired oil canvases which resonate with the beauty of the earth and sing with the glory of the sun and the moon.

STANISLAV BARTNIKAS’ “Aero-Art” aerial photography captures from an airplane an elevated view of the topography of the world as he celebrates the splendor of our world from above.

TERESA BELLINI’s expressionist abstract oeuvre which features spectral colors, offers a non-objective, non-verbal, visceral parallax vision of the world, radiating powerful energy while intermingling the psyche of the organic universe.

MICHAEL GLEIZER illustrates the celestial dynamism and magnetic energy of post-impressionism in his female reverie canvases, which radiate sun-kissed light and gossamer women who interact in his magical illusory realm.

DEEPA KULKARNI’s polychromatic, abstract paintings invite us on an artistic journey of sensory exploration, as her inner artistic vision focuses primarily on the boundary between what is internal and external, posing a perceptual visual riddle.

PETER MAGES’ surrealist fantasy paintings manifest visual vocabularies of surrealism, figurative along with abstraction, drawing inspiration from life and dreams, inviting us into a kaleidoscopic world where figures dance on the edge of reality.

# CHELSEA COSMOS

## September 9th- December 9th 2023

NATHA's expressionistic, figurative art blends the fantastic with the real, as her magical oeuvre articulates the vortex of inner visceral human emotion, with dream-like forms which conjure mystical apparitions, evoking a spellbinding sense of intrigue.

JOHN PETERS, "Master of the Gold Leaf," Magic Realism landscapes transform nature into a magical wonderland, as he explores the effervescent energies of the natural world with his masterful, color saturated expressionist Magic Realism paintings.

SHAO REN's visceral figurative expressionistic compositions chromatically swirl on canvas as she externalizes an internal world and inner emotions, mirroring visions of the innermost syntax of the human soul.

MIGUEL RIBEIRO, a lens-based artist, photographer, doctor and visual narrator, shines the spotlight on his subjects as he navigates the audience to view the reality life through the prism of his camera, encapsulating the essence of the world with a unique artistic perspective.

ROBERT SWEDROE, renowned architect, whose spiritual skyscape paintings are a bridge from the earth to the sky, showcase soaring, kaleidoscopic butterflies who symbolize hope, renewal and eternity and convey the universal beauty of the world.

CHARLOTTE SZYNSKIE'S figurative bronze sculptures demonstrate her unmatched technical ability and exceptional creative spirit as she deftly breathes life into her work, revealing figures that seem poised to step off their bases and soar into air.

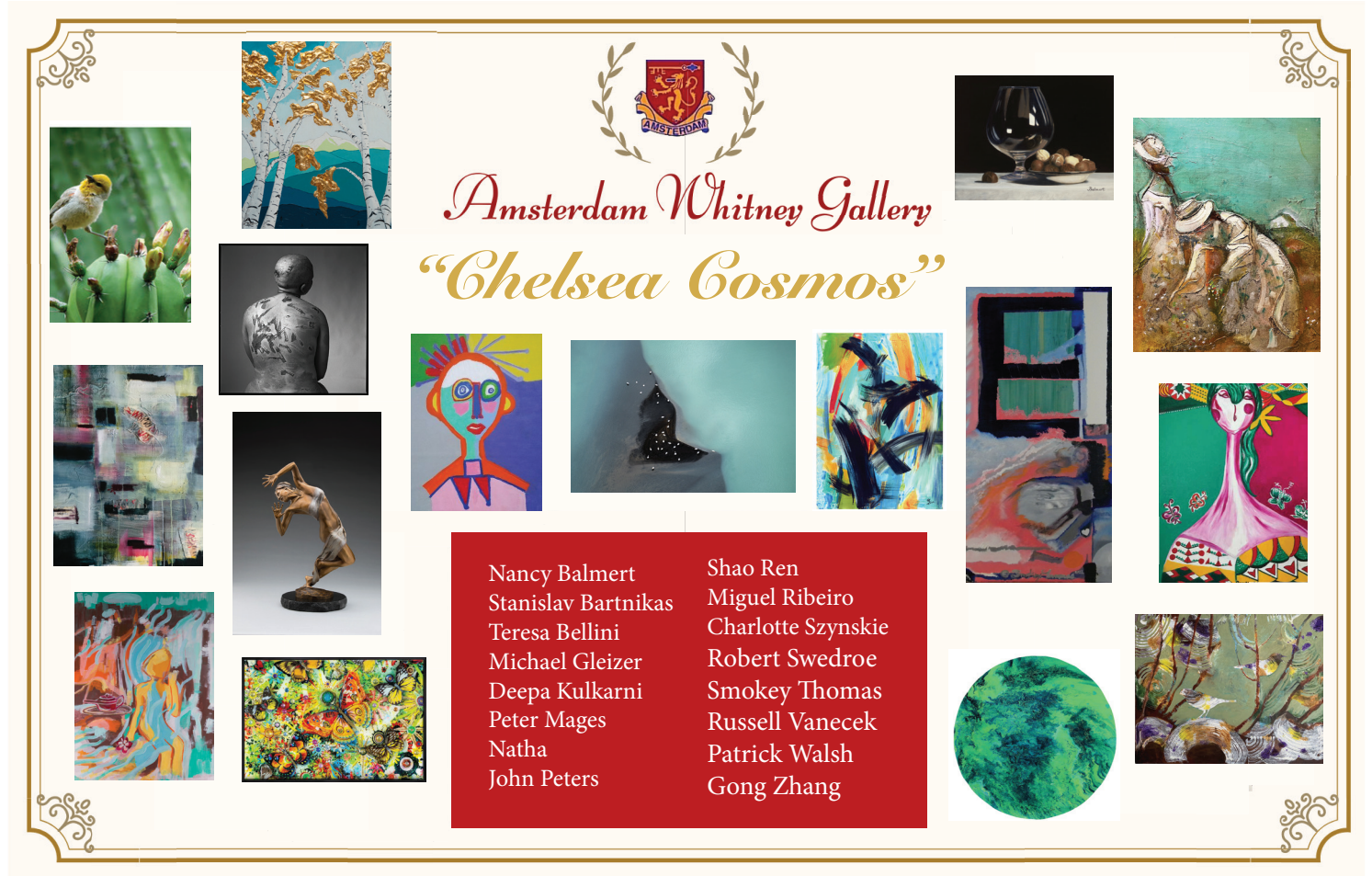
SMOKEY THOMAS' visceral, non-representational art is replete with a powerful fulcrum of expressive sensations, resonating with a sensory, abstract glimpse inside the human condition, illustrating the emotional essence of the deep heart's core.

RUSSELL VANECEK's ethereal landscape paintings are dominated by fluttering birds as he aims to bridge the gap between the human experience and the natural world, inviting viewers to participate in the intricate web of nature.

PATRICK WALSH's ground-breaking PhotoMosaics collection translates his supreme talent into resplendent photography, employing his "third eye" to create unique photos which masterfully combine hundreds of photos resulting in one unique vision, which are never digitally or photoshop manipulated.

GONG ZHANG merges the worlds of architecture, calligraphy, and traditional Chinese painting into a visually stunning symphony of abstract art that is a convergence of east-meets west cultural influences which resonate with timeless expressionism.





"CHELSEA COSMOS"  
 September to December 2023

AMSTERDAM WHITNEY GALLERY, located  
 at 210 Eleventh Avenue (between 24th & 24th Streets)  
 Chelsea, New York City, 10001