

GEORGE CASPROWITZ



# ART ACQUISITOR

The Magazine For The Discerning Collector

Volume XIX

Spring 2025

PUBLISHED BY  
AMSTERDAM  
WHITNEY  
GALLERY



*Bang*, 2023, Acrylic on Paper, 11" x 8.5"



# ANNE SWAN MOORE



*In My Garden XIV (Unfinished Melody), Oil on Canvas, 24" x 24"*



## ART ACQUISITOR

*The Magazine for the  
Discerning Collector*

**ART ACQUISITOR MAGAZINE** is  
Published and Produced Exclusively by  
**AMSTERDAM WHITNEY GALLERY**  
Copyright © 2025. All rights reserved.

Executive Offices: 210 Eleventh Avenue  
Suite 404 Chelsea, New York, NY 10001  
Tel: 212.255.9050  
Email: [art@amsterdam-whitney.com](mailto:art@amsterdam-whitney.com)  
[www.AmsterdamWhitneyGallery.com](http://www.AmsterdamWhitneyGallery.com)

Facebook.com/Amsterdam.Whitney  
AmsterdamWhitney.tumblr.com  
Pinterest.com/AmsterdamWhitny  
Twitter @AmsterdamWhitny  
Instagram @AmsterdamWhitney

**Ruthie Tucker**  
*Editor-in-Chief*  
*Promotion Director*

**H.E. Ambassador Dr.**  
**Alton Louis Amsterdam III**  
*Publisher Emeritus*

**Editorial/Graphic Design Coordinator**  
Samantha Reali

For Collector Inquiries, Please Contact:

**AMSTERDAM WHITNEY  
GALLERY**

212 . 255 . 9050  
[art@amsterdam-whitney.com](mailto:art@amsterdam-whitney.com)

Cover

**GEORGE CASPROWITZ**  
*Bang, 2023*  
Acrylic on Paper 11" x 8.5"

Volume XIX

**ART ACQUISITOR**

SPRING 2025

## INDEX OF ARTISTS

CASPROWITZ, GEORGE.....	4-7, FRONT COVER
BALMERT, NANCY.....	8-9, BACK COVER
ASHBOURNE, TOM.....	10-11, INSIDE BACK COVER
PETERS, JOHN.....	12-13
MOORE, ANNESWAN.....	14-15, INSIDE FRONT COVER
GLEIZER, MICHAEL.....	16-17
CHRISTOL, BARBARA.....	18-19
SCHAFFER, MICHAEL.....	20-21
DIANA, MAURIZIO.....	22-23
HOEFFLER, FRANK.....	24-25
ISELI, SANDY.....	26-27
McKENZIE, SARA.....	28
JUNGBLUTH, ELKE.....	29
TAN, ANNETTE.....	30
LEVY, NERYS.....	31
PINEDA, SADY.....	32
ZHANG, LIHONG.....	33
AMBRIZ, NICHOLAS.....	34
STANLEY, KATHY.....	35
RUDDY, SALLY.....	35
MOLE, LORI.....	36
McNEIL, KASANDRA.....	36
YAKOBI, LINA.....	37
THOMAS, SMOKEY.....	37
RANDOLPH, LARRY.....	38
VIOLETTE, MARC.....	38
LIAN, TONY.....	38
COHEN, WENDY.....	39
JASPER, JACK.....	39
FILIPICH, JUDY.....	39
DOPPELT, RONI LYNN.....	39
SIMON, DOUG.....	40
GELMAN, MATI.....	40
CONN, RIC.....	40
XIANG, HUAI XUAN - CHLOE.....	40

# GEORGE CASPROWITZ

---



*Hard Target to Hit, 2023, Acrylic on Paper, 8.5" x 11"*



*"For more than 50 years in my art, I have drawn deep inspiration from the intricate and beautiful aspects of nature." - George Casprowitz*

**A**s viewers engage with the works of George Casprowitz, they are drawn into his own journey of personal and professional evolution. They share in the excitement of an artistic vision shaped by both the natural world as well as the emotional and spiritual imprints of his most recent travels and life changes. In short, his art constantly reflects where he finds himself at any particular time.

An American-born and Canadian-based artist, Casprowitz reveals the power of the free-flowing, fluid images that he shapes into the colorful pops of gorgeously-hued tones now forming the essence of his body of work. Each canvas thrums



*Unlearn, 1973, Acrylic on Multipanel Canvas, 31" x 31"*

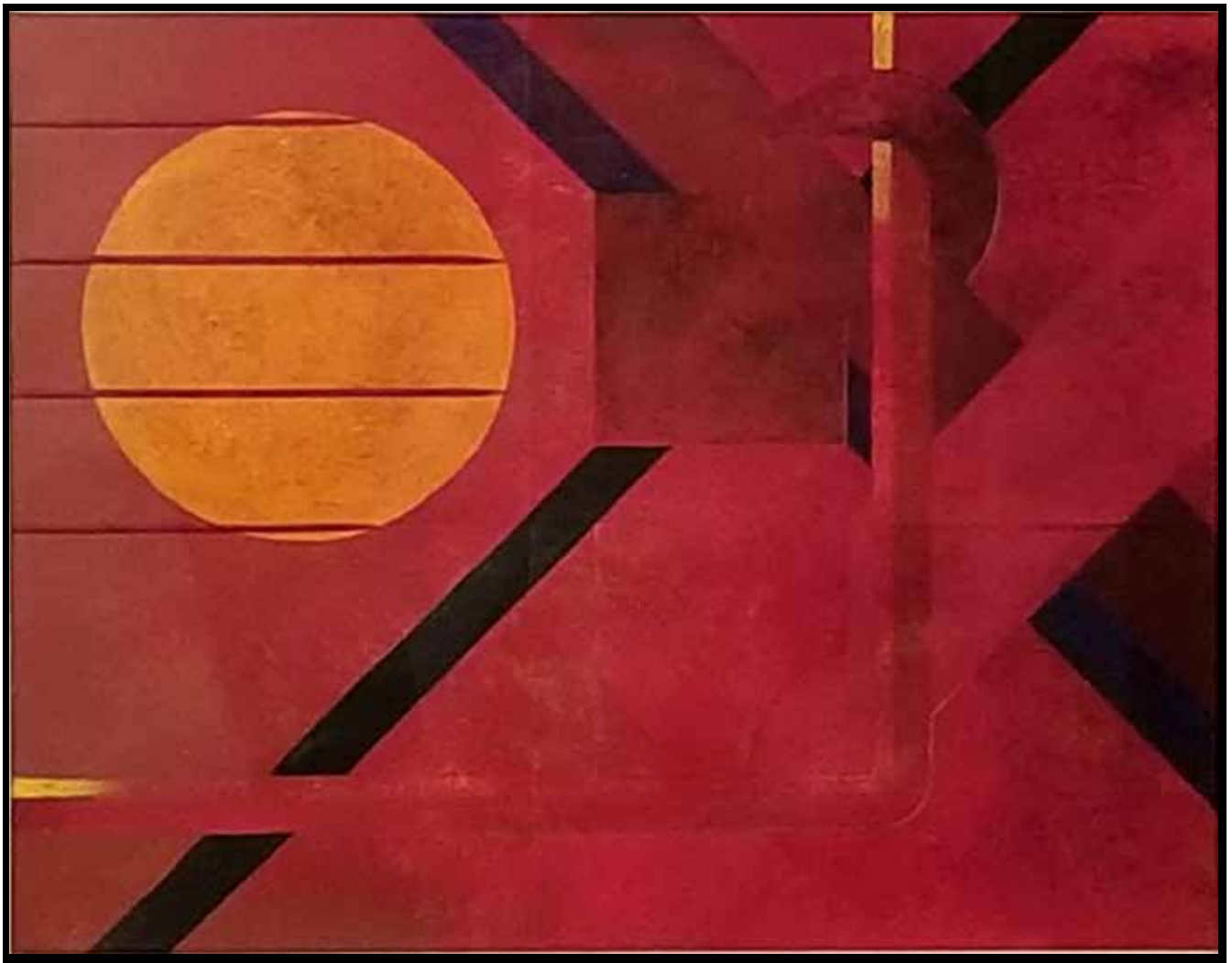


*Inner Circle, 2010, Acrylic on Paper with Bamboo, 18" x 14"*

with a distinctive, dreamlike quality emanating from a master colorist and visionary creator.

This has not always been the case with his work, which has been a journey of innovation and personal challenge to move away from the strong influences of his initial study of and training in architecture. It became the foundation of his artwork and can still be seen in his work today.

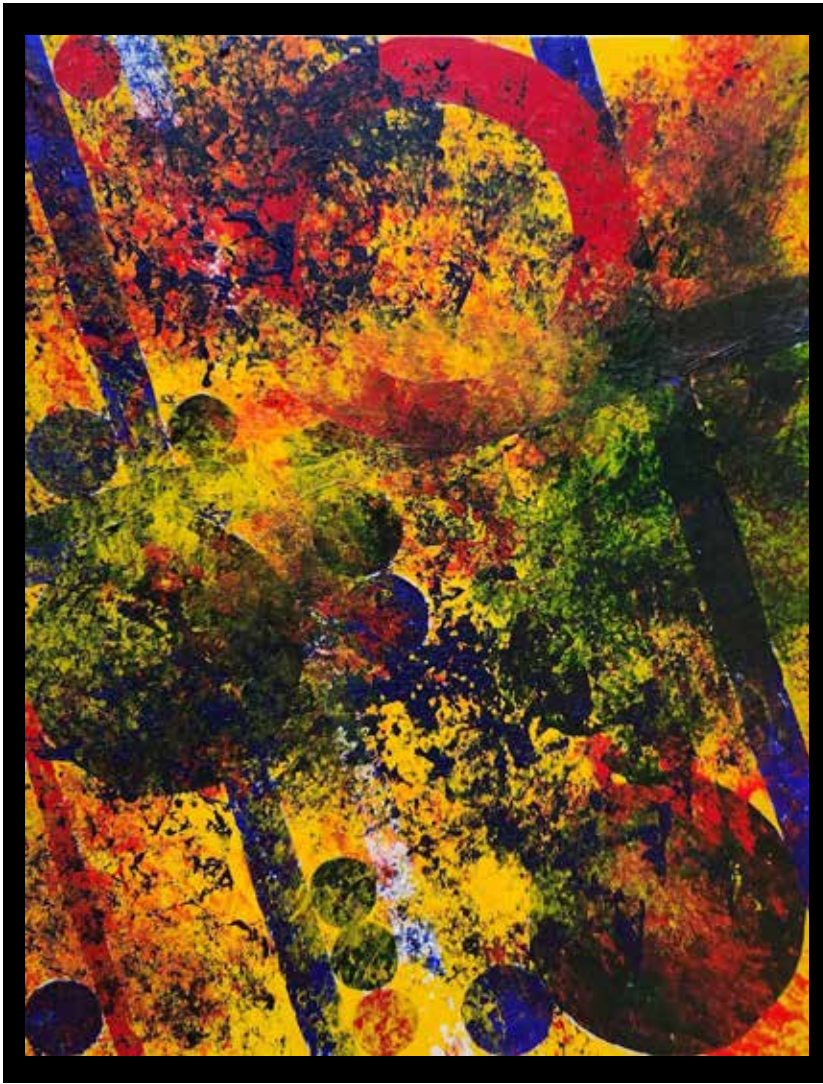
Establishing his artistic reputation as a hard-edged painter, his early works were highly influenced by that architectural background and stand as brilliant examples of this influential art movement that emerged in the 1960s. These alluring, multi-paneled canvases are masterpieces of the Hard-Edge movement, a style that marries the precise, structured compositions of geometric abstraction with the vivid, emotionally charged forms of Color Field Painting. In these works, Casprowitz employs sharp, unyielding lines and striking contrasts of color to create dynamic visual experiences that captivate and engage the viewer. Each piece reflects a balance between bold, intense forms and serene, contemplative spaces.



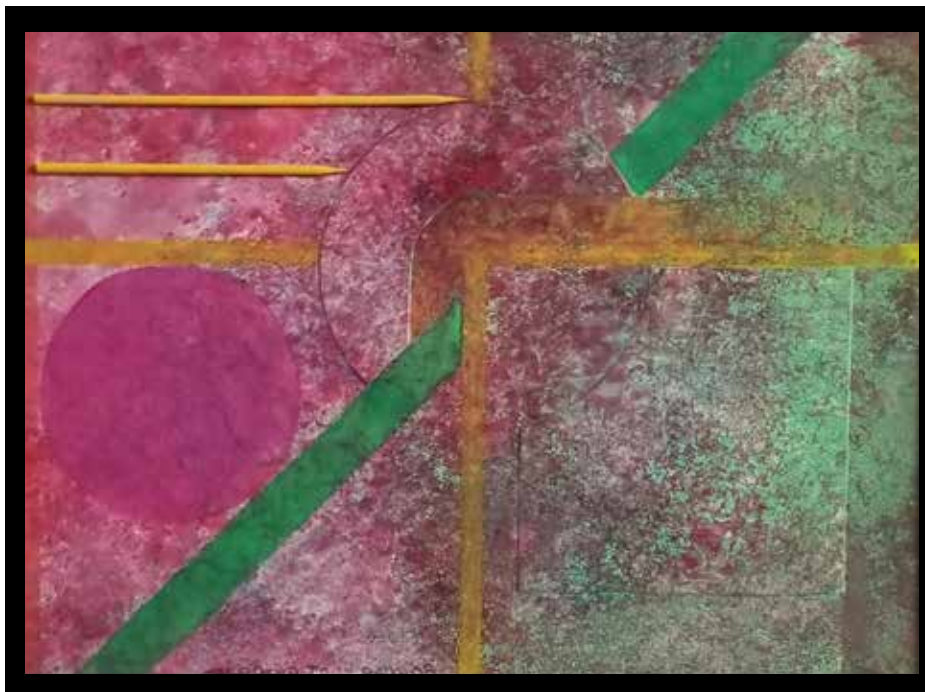
*Coming from the East, 2008, Acrylic on Paper with Bamboo, 15" x 22"*

*GEORGE CASPROWITZ*

In the 1980's his work took a turn. Moving to northern British Columbia, Casprowitz reacted to the long harsh winters with new paintings that burst to life through bold, sweeping brushstrokes, finding beauty in spontaneous moments of artistic discovery. Gone were the more defined lines, the monochromatic spaces, the geometric abstractions. A checkerboard pattern starts to emerge, demonstrating a move to a more whimsical and vivid exploration of form and color. With the birth of his son, his works began to include that influence, resulting in a unique menagerie of delightfully playful animals and figures, a serendipity of inspiration.



*Happy Day*, 2023, Acrylic on Paper, 11" x 8.5"



*Cabin Sunset*, 2008, Acrylic on Paper with Bamboo, 8.5" x 11"

Moving away from such figurative work, Casprowitz began exploring abstraction influenced by surrealism, inviting the viewer into a kaleidoscopic, capricious world where illusory forms dance just on the edge of definition. Technicolor tones and electrifying scenarios fill his exuberant painterly realm, all of it united through abstracted forms that communicate optimism, surprise, and unlimited possibility, a sense of drama reflecting a vortex of emotions.

Bright, powerful, and joyous, Casprowitz's paintings are a beautiful intermix of nature transmuted into the color and texture of dreams. Celebrated and collected world-wide, his modern masterpieces have been showcased in major cities around the world and have enjoyed highly acclaimed exhibitions in both Canada, and the U.S.



*The Ball Player*, 2007, Acrylic on Paper, 22" x 25"



*Spring*, 2023, Acrylic on Paper, 13" x 13"

# NANCY BALMERT

---

**W**ith natural instinct, Nancy Balmert's floral, landscape and still life paintings manifest Vincent Van Gogh's proclamation: "It is not the language of painters but the language of nature which one should listen to, the feeling for the things themselves, for reality is more important than the feeling for pictures." Expanding the parameters of this statement, Nancy Balmert, "Queen of Flowers," celebrates a rendezvous with nature as she highlights the seductive drama of the terrain. Sharing a co-relationship with Mother Nature, Nancy Balmert, also known as the "Ambassador of the Natural Realm," portrays her deep commitment to commemorating the world's beauty and preservation.

Inviting her audience to explore magical realms, she leads us on a pilgrimage through fantastical gardens, international sites and divine special moments where she awakens the splendor of life. Waving her magic wand, the "Queen of Flowers" paint brush unveils a creative narrative, inspired by the rich tapestry below our feet and above our heads. Kissed by the sun and embraced by the earth, Ms. Balmert's neo-realistic oil on canvas compositions are



Nancy Balmert showcased with *Moon Orchids*, Oil on Canvas, 30" x 24"

a testament to the extraordinary potential found in all corners of nature—a celebration of the extraordinary language of the terrain. Renowned for her quintessential Dutch Master signature style of softly blended edges, her oil paintings create a brilliant complexity



*First Prize Rose*, Oil on Canvas, 20" x 24"



in each work, weaving a colorful concert of hues and textures, building a rich tapestry onto each canvas. Inspired by the classic 17th century Dutch Master style, her hyper-realistic compositions encapsulate an exact representation of nature, reverberating with a meticulous attention to detail. Featuring chiaroscuro- a dramatic permutation of light and shadow, another hallmark of the artist's oeuvre, she adroitly showcases her profound mastery of the old Dutch master techniques.

Unparalleled beauty is exuded in her jewel-like, treasured masterpieces which elegantly depict the magnificence of nature. Contrasted and mirrored in her lyrical colorations are shimmering cascades of ribbons of color which are highlighted by masterful rays of light. By creating these juxtapositions, Nancy Balmert underlines the kindred spirit between our terrestrial realm and the environment. Echoing the organic kinship between the power and the fragile beauty of the natural world, her oil-on-canvas oeuvre underscores the spiritual connection between the heart of humankind and the forces of nature.

Elegant, timeless and eternal, Nancy Balmert's oeuvre is unrivaled and unmatched in achieving global fame in the international art world. Internationally celebrated, Nancy Balmert exemplifies an art- forward renaissance woman whose multi-faceted artistic talents have enabled her to scale to the pinnacle of heights in the global art world. Traveling to multiple continents, Nancy and her husband, Paul search for the perfect flower in its richest bloom. Globally awarded for her world-renowned paintings, Ms. Balmert



*Crystal and Pink Oriental Orchids, Oil on Canvas, 14' x 14"*



*Celestial Lillies, Oil on Canvas, 14" x 11"*

is the recipient of numerous prestigious international awards including the International Prize Leonardo Da Vinci, in Florence, Italy, the International Biennial Prize of Flanders, Belgium, the International Prize Diego Velazquez in Barcelona, Spain as well as being showcased in The Great Encyclopedia of International Art. In addition, she was highlighted in the elite publication "50 (International) Artists to Invest In." Furthermore, in 2022, Nancy Balmert was honored to exhibit at the Louvre Museum, in Paris, France. Added to the apex of Nancy Balmert's acclaimed credentials, she is a noted published author, having published "Moments of Truth: A Tour of the Other Side."



*Santorini Three, Oil on Canvas, 11" x 14"*

# TOM ASHBOURNE

---



**I**nterconnected to Henry Moore's statement that "A sculptor is a person obsessed with the form and shape of things," Canadian sculptor, Tom Ashbourne, SSC, SCA, OSA, is intrinsically linked to the sculpture medium. Transforming and

mutating a magic fusion of colors and shapes into his abstract, colored-stone sculptures, this international, cosmopolitan artist breathes life into his three-dimensional, highly acclaimed oeuvre. Flawlessly capturing the drama of emotion, the joy of celebration, the pain of suffering, and the union of cultural bonding, his dynamic, abstracted shapes resonate with an infatuation of hued-toned stone and a love of clean, minimalistic design.

Influenced by the world around him, Tom Ashbourne's sculptural creations become an ingenious physical embodiment of emotion and boundless imagination through reductive shape and innovative color. The artist explains: "My sculptures are an expression of



*Evening Shadows*, Translucent Alabaster, Marble Base, 12" X 9" X 7"



*Blue Eyed Girl Too*, Rose Wonderstone, Glass, Granite Base, 17" x 8" x 8"

my life and artistic experiences and are an extension of my knowledge about what transforms a sculpture into a successful artistic statement.” In a three-dimensional format, bold shapes and dynamic colors externalize his inner voice to tangibly express emotions and unleash the bounds of his imagination. Harnessing the intuitive flow that lies at the heart of his work, each compelling sculpture conveys a critical message which reflects the ever-changing moods of the world, such as concepts about people, relationships, and world events.

Organic in nature, Tom Ashbourne’s captivating artistic vision draws inspiration from positive energy, conveying the resilience and strength inherent in humankind. Both celebratory and challenging, his body of work defines the inter-cultural connection of the universe, resulting in sculptural masterpieces which appear to represent stories-in-the-round. Manifested in this three-dimensionality of aesthetic form, is space, and texture, which synthesize into a contemporary sculptural lexicon. Sharing a co-relation with nature, he intermingles harmony, balance and rhythm stating: “I naturally think in 3-D, I see things in the raw stone and find the best way to bring them to life. I continually assess the sculpture, working on each side with equal intensity. I want each side of the sculpture to draw people’s interest, over and over.”

Through abstract reductivity and simplified lines, Tom Ashbourne masterfully straddles the boundaries between fantasy and reality. Stripping the subject of decorative elements, a raw honesty emerges, and the psychological makeup of



*Energy & Light, Bronze, 36" x 8" x 8"*



*Firewalker, Black Calcite, Copper Gilt, Granite Base, 15" x 7" x 5"*

each carved form is revealed. By removing superfluous details, he reveals the stone’s pure essence, adroitly creating tangible assemblage colored-stone sculptures, each of which are an optical mix of form and harmony. As a visual counterpoint, various hues of colored alabaster are employed, accentuating the significance of the deep inner core of his compositions. Deftly re-creating the intangible within the tangible, his abstracted forms, are imbued with the irrepressible energy of matter, as well as the duality between heaviness and lightness of form.

Provocatively exploring the material and visceral shape of abstracted forms, Tom Ashbourne’s dazzling oeuvre bursts with the exuberance of life. External narratives of humanity, his compelling sculptural stories are manifested through a nuanced and adroit sculpting hand. Carved with emotional clarity, his free-flowing sculptures capture the subconscious of the human soul, providing a tangible look to humanity. Modern yet timeless, elegant, and sophisticated, Tom Ashbourne achieves an abstracted sculptural sanctity of unity and harmony. Tom Ashbourne, a retired executive and art collector, has been globally exhibited in both private collections and public collections in Canada, the U.S., as well as worldwide. Most notably, in October 2023, he had the honor of exhibiting in the Florence Biennale. Continually expanding his reputation as an international master sculptor, Amsterdam Whitney Gallery is proud to shine the spotlight on this cosmopolitan art star!

# JOHN PETERS



Contemplating the eternal connection between Nature and Art, William Blake observed: "Art is the Tree of Life." Visually manifesting the ideology and continuity of the ever-lasting eternity of the tree, the landscape paintings of John Peters' "Gems of the Forest" series pay homage to the divinity

of nature. Resonating with a kaleidoscopic, mosaic palette, his gem-hued, tree-themed "Gems of the Forest" series is highlighted by a fauvist palette of gleaming amethyst, sparking diamond, verdant emerald and fiery opal. Revisioning his personal relationship with the natural world, Mr. Peters conveys a hybrid artistic topography of the tree, intermingling opalescent organic shapes with hues reminiscent of Tiffany-stained glass windows,

Aglow with a chromatic palette of variegated color, John Peters' illuminated "Gems of the Forest" paintings resemble portals to nature, radiating a trans luminescent, harmonious coexistence. Immersed in his visceral observation of the terrain, his expressionist landscape art translates the pleasure of the universe with a spiritual vision which is sourced with beauty and hope. Infused with luminous hues, his allusions to the familiar in nature resonate with swirling



*Diamond*, Oil on Board, 20" x 24"

arabesques of colorful dynamics and are juxtaposed with the complexity of a three-dimensional surface. The result is a truly immersive artistic experience with nature where undulating swaths of dynamic color explode with heavily saturated tones. Polychromatic shades swirl and sway into a visionary dance as cascades of colors rise and fall, bursting with contrast, coalescing into a powerful tactility.

Radiating a sensory cue, Mr. Peters emphasizes that color in nature is not only about seeing but also about feeling. Influenced by both the French Fauvists and German Expressionists, his dazzling, incandescent nature inspired oeuvre conveys the core principle of his sensorial experience with nature. Shimmering and glimmering in the reflected and refracted light, his hypnotic and beguiling paintings cast a gleaming spiritual aura on the enduring quality of nature. Optically atmospheric and other-worldly, his brilliantly illuminated dioramas render a divine manifestation of the topography of the land, offering a magical artistic vision of the terrestrial majesty of the universe and its eternal quality.

Galvanized by his personal view of traditional landscape painting, John Peters intermixes a rich and rhythmic symbiosis of the terrain as he recreates the intangible boundary between the permanence of the natural elements of the universe. Not merely recording the world he sees, but rather recreating the emotions he feels about nature, he transmits visceral tangible concepts of the world as his oeuvre emblemizes the eternal essence of life. With a



*Amethyst*, Oil on Board, 20" x 24"



spiritual, universal vision that mystically illuminates the timelessness of nature, his body of work is an important visual narrative underscoring the emotional link between nature and the artistic experience.

Celestially dramatic, John Peters' sublime compositions vibrantly bring nature's artistic language alive through his aesthetic lexicon which intermingles the emotional impact of the wonderment of the terrain. The award-winning painter has participated in a lifetime of immersion in the arts, culminating in an outstanding body of work which has ascended him into a meaningful position in the contemporary art arena. Active with the Detroit Institute of Art, Mr. Peters is also a noted author of several art books. This masterful artist has enjoyed numerous successful exhibitions the U.S., as well as in Europe and has become a collector favorite in the international art world.

*Emerald*, Oil on Board, 20" x 24"



*Fire Opal*, Oil on Board, 20" x 24"

# ANNE SWAN MOORE

---

**M**onet mused: “My garden is my most beautiful masterpiece.” Motivated by Monet’s observation, Anne Swan Moore follows a long tradition of nature-inspired art, as she explores the sensorial legacy of nature and continues humankind’s profound quest to find beauty in our natural terrain. This San Diego-based virtuosic, master’s landscape, floral, swan and still life paintings capture the beauty of nature in an unusual way, offering color-filled reveries featuring an imaginative, fresh, expressionistic perspective. Illuminating the natural world, her diverse oeuvre showcases visions of earthly delight which radiate superlative color and light, becoming artistic dialogues revealing the essence of the environment and focusing on the joys of the natural realm.

Acutely connected to the aesthetics of the terrain, Anne Swan Moore’s “Gardens of Eden,” intermingle an exquisite sensitivity to Mother Nature as she accentuates the fragility and intensity of the inner terrestrial world. While echoing the beauty and energy of nature, her works balance the fragile relationship which humanity shares with the environment. Heightened by a sense of subtle contrasts, she emphasizes the

ephemeral and fleeting composition of nature as she illustrates the sublimity of the natural world. This rendezvous with the terrain radiates a celestial visual dialogue surrounding our land.

Resonating with gossamer glimmers of light, Anne Swan Moore’s atmospheric expressionist gardenscapes depict an imaginary vision of the origins of the natural world. Encapsulating a lyrical sense of romanticism, her gardenscape series reflects a masterly use of color, shape, and texture as each scene contributes to an extraordinary reflection. By inviting the viewer on a visual voyage to her secret garden, she transports us to idyllic gardens through her chromatic color palette, tantalizing texture, and radiant luminescence, as we enjoy an intimate tête-à-tête with nature.

Painting a paradise on earth, Ms. Moore enshrines that which is beautiful and skillfully balances this narrative with a superb formal technique utilizing a brilliant spectrum of hues. A dazzling kaleidoscopic color-wheel of sun-kissed tones implode with punches of warm red, verdant green and



*In My Garden III*, Oil on Wood Panel, 20” x 20”



*Very Still Still Life*, Oil on Canvas, 24” x 18”



*Seasons of My Garden*, Oil on Canvas, 24" x 18"

sun-dappled golden tones which add depth and movement to her striking vistas. Her dreamscapes' colors burst forth from the canvas with an explosive and effervescent charm as these environs dazzle the eye. A tantalizing interplay of light and shadow radiate the magical scenes imbuing her joyful paintings with ambrosial effects. Anne Swan Moore's efflorescent dreamscapes are a reaffirmation of the aesthetic joys of the outdoors, providing serenity and harmony with our universe.



Both modern and timeless, Anne Swan Moore's magic gardens become luminescent icons to the lyricisms of nature, reflecting a contemporary approach of style and technique. Her incandescent paintings result in modern masterpieces which invite the viewer to inhale the divine beauty of nature and exhale its sensations, allowing us to celebrate the joys of our universe. Cultivating a strong reputation in the national art world, her artwork is treasured in prestigious public and private collections. Amsterdam Whitney Gallery is delighted to shine the spotlight on this contemporary star and to showcase her stellar work!



*Swans*, Oil on Canvas, 16" x 14"

# MICHAEL GLEIZER



**I**mbued with imaginative visual imagery, Michael Gleizer's magical oeuvre is artistically aligned with Marc Chagall who stated: "Art seems to be a state of soul more than anything else." Intermingling whimsy and wonder, Ukrainian born, New York based Michael Gleizer's fantastical figurative and nature compositions are

steeped in romantic nostalgia, recalling a simpler way of life, as he conjures a bygone era where people lived in the moment and moved at a slower pace. Like a vintage poster or a sepia-tinted postcard, every artistic reverie appears intelligently staged as if the artist were sending a message of love to someone in another country or another era. Timeless and ethereal, he does not seek to represent any specific moment in time, but rather embraces a broad scope of remembered experiences. With expressionist feelings, he blends fantasy with reality, as his ethereal dreamscapes encourage us to embrace the ways of the past without losing sight of the present.



*Field Flowers*, Mixed Media on Cardboard, 14.5" x 11.5"



*The Milkman*, Mixed Media on Cardboard, 19" x 21"



Channeling his creativity through otherworldly scenarios which blend time and place, Michael Gleizer's masterful oeuvre captures the ambiance of bygone times as he invites us to journey into his interior world where reality is suspended and fantasy flourishes. Influenced by the complexity and beauty of the human experience and a passion for the human figure and nature, he fuses dreamlike forms into nature, which is his signature style. As he navigates the contours of these natural and human landscapes, his allegorical transfigurations metamorph into reveries, which transcend reality with elegant and dreamlike forms. By blending magical and emotional dreams, Michael Gleizer's art reflects a profound visionary syntax which mysteriously reverberates with intuitive and psychological inner expressions of the human spirit.

Familiar and transcendental, his arresting visceral compositions combine reality with fantasy as they transport viewers back to simpler and gentler moments. Detailing humanity's everlasting fascination and attraction to the power and mystique of the natural realm, Mr. Gleizer's poignant scenarios luminously present the timeless love story of man and nature. Richly detailed metaphorical imagery allows his lyrical dioramas to bridge the divide between the past and the present, as he eschews the trappings of our technological culture and introduces us to a quieter and gentler era. Imaginative in scope, his external realm visually illustrates the temporality of nature in an ever-changing world, while he explores the effervescent energies and fleeting dynamism of the natural world.



*Talking to the Stars*, Mixed Media on Cardboard, 16" x 16"



*Summer*, Mixed Media on Cardboard, 14.5" x 11.5"

Committed to creativity and individuality, Michael Gleizer's provocative dreamscapes offer a glimpse to a bygone world as he fuses nature and the figurative, resulting in a unique conceptual symbolic synthesis of the world. Deeply sentimental and overflowing with emotion, his chimerical dream world is filled with fantasy and splendor as he weaves together these various concepts of reality and imagination.

Dreamlike and timeless, a dance of visual enchantment is created by his masterful palette consisting of soft, gentle colors which radiate an aura of peace and serenity, while whispering thoughts of a gentler era. Mystical and magical, Michael Gleizer blends reality with fantasy, resulting in paintings that are both realistic and surreal, both poignant and comforting. The award-winning international artist has globally exhibited his highly acclaimed across four continents in both group and solo shows throughout Europe and the United States. Celebrated in prestigious national and international private and corporate collections, this contemporary master's work shines with vivid creativity and Amsterdam Whitney Gallery is proud to be exhibiting his museum-caliber work.

# BARBARA CHRISTOL



“I found I could say things with color and shapes that I could not say any other way – things I had no words for,” declared Georgia O’Keeffe. Illustrating this principle, French painter

Barbara Christol’s incandescent, blue-hued abstract oeuvre reflects ethereal optical projections which inspire human consciousness into thoughtful contemplation of the universe. Gracefully elegant by intermixing a chromatic blue color palette with geometric dynamic forms which reverberate with fluid organic lines, her explosive bursts of color harmoniously morph into dazzling compositions. Visually juxtaposing geometric and free flowing shapes with complementary color, she produces configurations of spatial three-dimensionality.

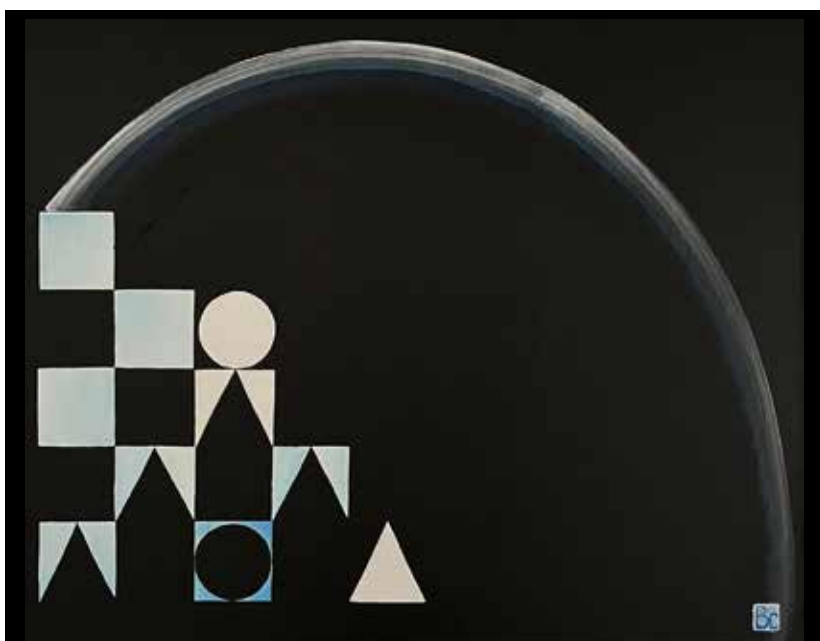
Recontextualizing creation as a labyrinth, Barbara Christol’s paintings reflect the conceptualization of geometry through art. By transcending words and recognizable images for pure expressionism conveyed through abstract forms, her luminous paintings highlight the depths of the human emotive experience. Adroitly intermingling translucent color with penetrating meaning, her beautiful, minimalist non-objective compositions synthesize an intense



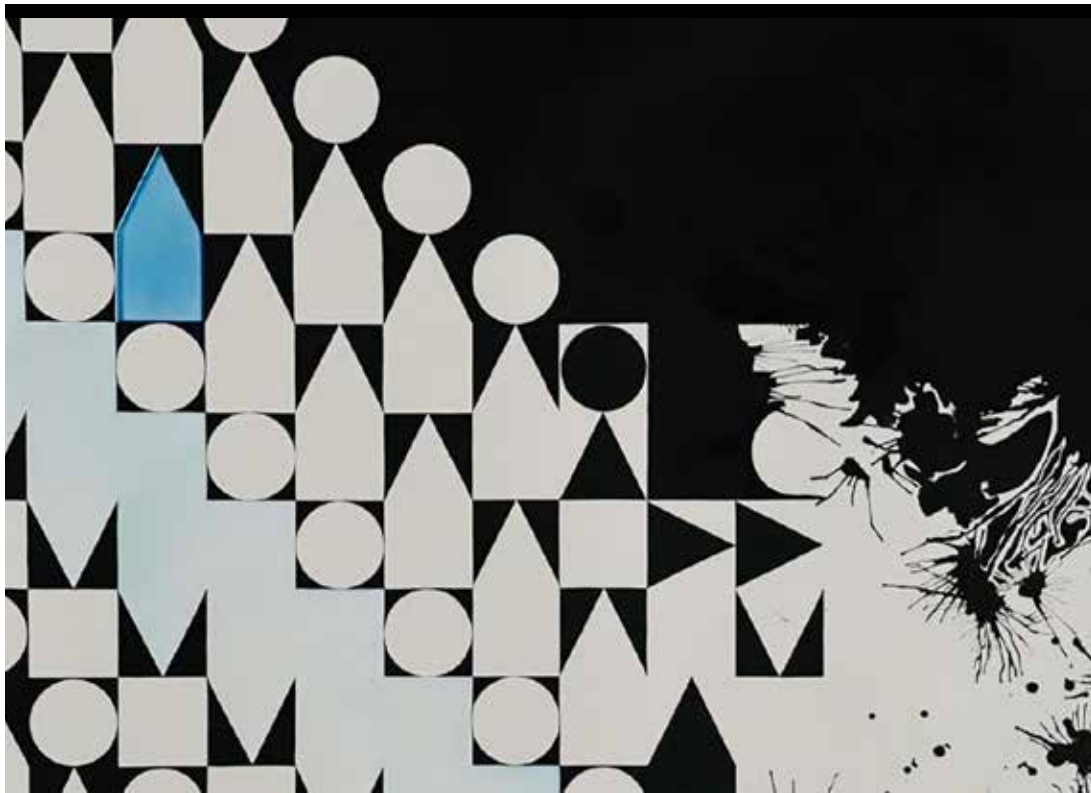
*Utopia, The Siena Color Series, Acrylic with Paint on Linen, 39.37” x 39.37”*

inner tangibility, Intermixing gestural color with organic shapes, atmospheric pools of brilliant spectral blue hues emerge into saturated multivalent color planes. Through topographical layers of richly saturated brushwork, her cerebral paintings radiate a divine, non-verbal language which seamlessly integrates these elements into her work.

Oscillating between three-dimensional spatial arrangement, her monochromatic gradations of blue geometric configurations celebrate the abstract journey of life as her canvases explore the expansive possibilities of a non-objective universal language. Her abstract quest is to translate onto canvas the non-representational divergent realities of shape and color, transcribing them to a complete fulcrum of expressive sensations. Resonating with the verve of non-objective vision, her masterful tableaux resonates with color and form which dominates her visceral masterful vision. Gestating into a sensory experience, this gifted artist’s powerful abstract work illustrates the emotional essence of the natural world and invites us to imaginatively connect with the universe.



*Arc-en-Bleu, 2024, Acrylic Paint on Linen Canvas, 19.69” x 24.02”*



*Almost Blue*, Mixed Media on Linen Canvas (Acrylic Paint and Pastel), 31.89" x 39.37"

With the beauty of the shape in mind, Barbara Christol's incandescent oeuvre accentuates an aesthetic expression channeled through precise geometric design elements. Intermingling combinations of blue-hued tones to create diverse image variations, her geometrical-based color filled compositions are amplified by constructed objects. Boldly and firmly embracing her individuality as an artist, her elegant and restrained compositions reveal an energized spatial composition through layering simple shapes and juxtaposing them against expressive color. Contrasting organic forms create complex relationships which overlap within an abstracted dynamic background, resulting in a subtle change of color and density expansion. Cool and expert, her judiciously planned geometric paintings coordinate a close color rapport with considerable finesse, as her spectral colors exist independently in space, without altering the over-all forms of the surface, or the complexities of the structure itself.

Brilliantly translating onto canvas with a syncopated beat of the abstract, award-winning artist Barbara Christol has participated in a lifetime of immersion in the arts. Culminating in a wonderful body of work, she has embarked

on a painting career which has catapulted her to a meaningful position in the contemporary art arena, both in France and America. The presence of this global artist's works in prestigious collections across the world is an affirmation of her continually expanding international reputation. Amsterdam Whitney Gallery is proud to showcase the masterful abstract compositions of this international art star!



*Over the Rainbow (Blue Diptych)*, Mixed Media on Linen Canvas, 27.56" x 55.12"

# MICHAEL SCHAFFER



**K**andinsky exclaimed: “If the artist has outer and inner eyes for nature, nature rewards him by giving him inspiration.” Inspired by an inner world and expressing these emotions to an outer world, California artist, Michael Schaffer’s evocative abstract expressionist naturescape paintings

externalize a unique and distinctive modern vision which reflects the motion of inner forces. Aligning his expressionist abstract landscape oeuvre with this sensibility, Mr. Schaffer channels a visceral parallax vision of nature, radiating a powerful energy, while intermingling the psyche of the organic terrain. Replete with emotive expression, his mesmerizing and sensitive compositions mirror an alluring mystique combined with an air of mystery and wonderment of the environment.

Paying a painterly homage to “Joshua Tree Park,” located in the High Desert region east of Los Angeles, Michael Schaffer was inspired to paint an eight painting mixed media series. Through the lens of an abstracted approach to nature, his paint brush rejoices in Joshua Tree Park’s celestial natural wonders and majestic beauty. By incorporating the actual sand and pumice rock of this natural phenomenon into



*High Desert 11, Acrylic on Canvas, 30” x 30”*



*High Desert 8, Acrylic on Canvas, 30” x 30”*

his eight-part acrylic and pen series, his visual syntax accentuates shimmering radiant colors, and variegated geological shapes resonating with angled boulders and crescent hills. Michael Schaffer declares; “It is one of the most beautiful sites of nature one can see. And for me, it has organically encapsulated divergent visions of the natural world.” Spiritually communing with the terrestrial realm, his lyrical abstract oeuvre results in an immersive experience with the natural terrain, as he searches for nature beyond the reality of our senses.

By capturing the fleeting effect of natural phenomena, Michael Schaffer seduces the viewer to contemplate a myriad of emotions regarding their relationship with the world. In our digital technological universe, where changes are occurring at lightning speed, this gifted artist shifts the visual dialogue inward by asking the viewer to put away techno-devices; to slow down and to take the time to view the world around them, and to think about their emotional relationship with nature. As he externalizes these emotions into visceral canvases, his non-objective oeuvre virtuosically applies paint onto the canvas resulting in a nuanced texture of tones. Topographical layers of richly applied brushwork impact the exhilarating expressivity of color as a visceral chromatic drama challenges the viewer’s inner heart to regard nature in a new light.

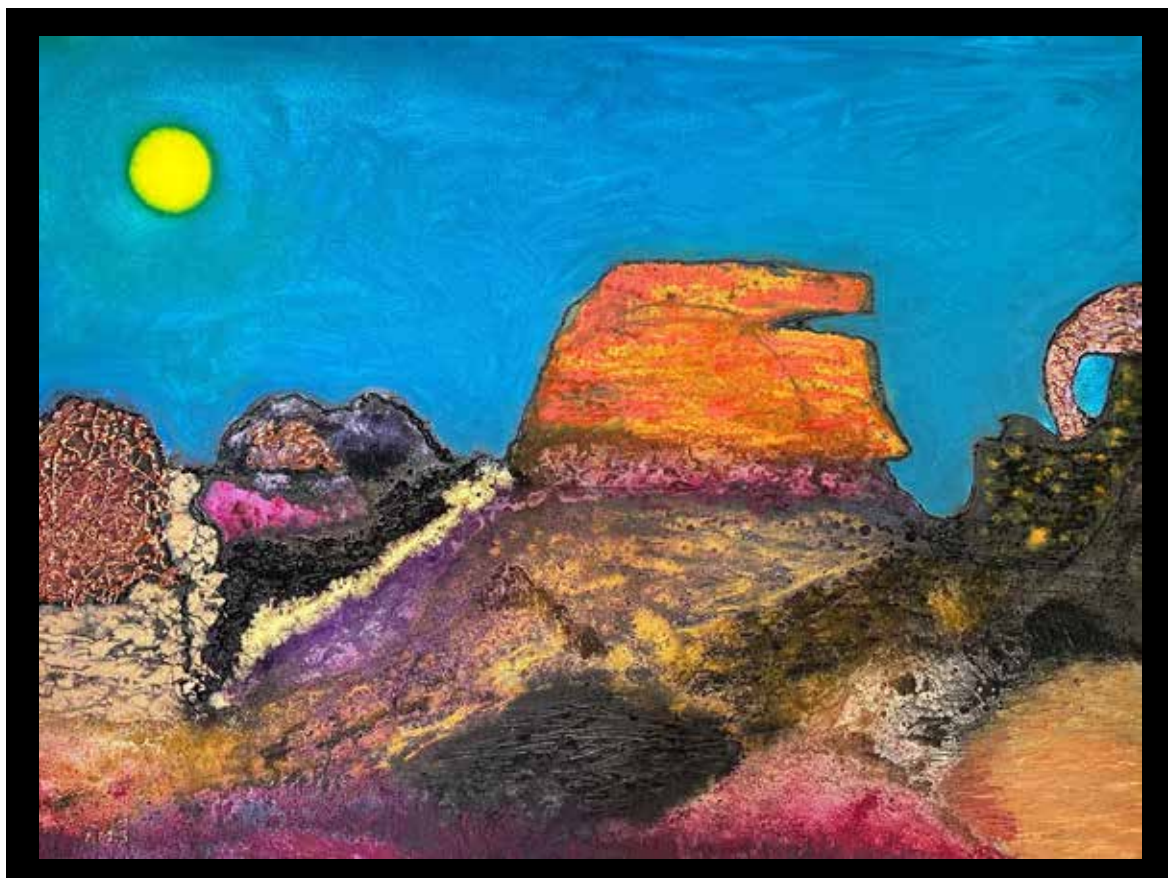
Powerful and alluring, there is a gorgeous spontaneity contained in Michael Schaffer's landscape compositions, offering a beautiful understanding of the world. Each composition creates a narrative in and of itself that is open for interpretation. By transcribing a syntax of lines, colors, shapes and rhythms, he entices our senses and stimulates our curiosity. Emotionally charged, the subtle tonal transitions are intermingled with an evanescent play of warm hues juxtaposed against cool tones, providing an astonishing richness and depth to the shadows and vibrant luminosity. A melodic and chromatic use of softly hued tones imbued with the fluidity and energy of his technique, underscores the effects of luminescent light.

Accentuating the interconnectedness of our inner and outer worlds to nature, Michael Schaffer's High Desert Series is a visually stirring testament to navigating our understanding of the terrain. Internationally recognized for his artistic achievement, Michael Schaffer's masterful paintings have catapulted him to national and international recognition. Brilliantly translating onto canvas the magnificence of nature, the award-winning painter has been featured in group exhibitions on the West Coast and East Coast.



*High Desert 10, Acrylic on Canvas, 30" x 40"*

Internationally honored to participate in prestigious exhibitions in France, Michael Schaffer was awarded the Prix De L'Originalité, winning first place in painting at the Art Show Paris. Amsterdam Whitney Gallery is delighted to shine the spotlight on this natural star!



*High Desert, Acrylic on Canvas, 30" x 40"*

# MAURIZIO DIANA



Aspiring to tangibly manifest on canvas the philosophy of Josef Albers who stated: “You have to cultivate vision,” renowned Italian geologist, physicist and painter, Maurizio Diana’s oeuvre invites his audience on a cross-cultural

visual odyssey, reflecting illuminated semi-abstracted figuration. Shaped by a global perspective, Maurizio Diana’s “New Horizons” oil and collage on canvas series, portrays a universal message which fuses an artistic legacy which interconnects humankind. By orchestrating an artistic mosaic of the external universe, Mr. Diana’s chromatic, expressionist vocabulary stimulates an artistic dialogue by combining the figurative along with the abstract. Masterfully illustrating a luminescent world populated by lightly painted transparent figures and forms, he reveals how a creative mind can translate a unique artistic vision.



*New Horizons 156- Three Women, Oil & Collage on Canvas, 20” x 27.5”*

Intuitively presenting subjects with illuminated allegorical symbols and shapes, Maurizio Diana’s “New Horizons” visionary world synthesizes iconography from the past as well as the present.



*New Horizons 155- The Family, Oil & Collage on Canvas, 31” x 40”*

Blending the imageries and languages of cultures that accompany the human experience, his art is an amalgamation of diverse artistic icons which become a visual metaphor for the complexities of life's cross-cultural experiences. Polarities of creation and contraction coalesce in his oeuvre, as he balances his art between the real and the imagined painted transfigurations, representing the expressive compositions of history and culture which successfully intermingle time and place. Visually arresting and highly original, his visceral narrative mirror both aspects of the outer world as they captivate the human spirit.

Adroitly crafting his compositions with a constellation of colors, Maurizio Diana displays a skilled understanding of the artistic language, employing intuition and spontaneity. Powerfully integrating intensity of color, mood, and texture into each kaleidoscopic canvas, swirling, expressionistic brushstrokes and a luscious jewel-tone color palette complement the intriguing scenes. Creating luxurious textures in nuanced, lush layers of paint which result in brilliant hues, light also plays prominently in the dazzling compositions, incandescently illuminating the emotional vistas and textural backgrounds. The overall effect is one of visceral expressionist introspection and aesthetic intrigue. Fluid and imaginative, his intermix of a cauldron of colors points to a strong artistic identity in which each hue and mark overflow with exploding vitality.



*New Horizons 151- Creation of the Woman, Oil & Collage on Canvas, 47" x 79"*



*New Horizons 152- The Wall, Oil & Collage on Canvas, 40" x 27.5"*

A visual syntax of creative color, form and line, intersect in his fantastical oeuvre, balancing universal constants in order to create works which are exciting and spectacular. Offering a keen eye for color, texture, and design, Maurizio Diana's compositions portray an incandescent universe that maintains a powerful visual energy sustained through his signature vibrancy. Expertly combining a varied color-hued palette, juxtaposing bright and muted shades, this gifted artist paints each image with a dynamic flow.

Sophisticated and expressive, Maurizio Diana's unique artistic vision focuses on the vortex of life, embracing the spiritual and imaginary world. Dedicated to the technological preservation of Italian heritage, his scientific research activities have been applauded world-wide. Internationally exhibited in solo and group exhibitions in Italy, Switzerland, France, Belgium, Egypt, China, as well as in New York, the cosmopolitan Italian artist Maurizio Diana's art is globally recognized. A passionate and lifelong proponent of the arts, his oeuvre brilliantly integrates creativity and embodies the essence of the resplendence of the world. The presence of this gifted artist's works in prestigious collections across the world is an affirmation of his continually expanding reputation. Amsterdam Whitney Gallery is proud to showcase the art of this International Master.

# FRANK HOFFLER

Claude Monet mused, “Nature won’t be summoned to order and won’t be kept waiting. It must be caught, well caught.” Inspired by this proclamation is Wisconsin artist, Frank Hoeffler, whose incandescent heaven-on-earth still life and landscape paintings commemorate the majesty of nature as he immortalizes the permanence of our natural world. With an unparalleled ability to capture the essence and spirit of the terrain, he channels Impressionist inspirations into splendid depictions of global vistas. Through a spectral color palette, he invites contemplation of the lushness of the land as he fuses the imagery of nature with the sensation and emotionality of powerful painterly expressions. Mr. Hoeffler’s paint brush becomes a tool which unites the universality of nature through a global perspective.

Encapsulating the evanescent temporality of nature, Frank Hoeffler’s oeuvre captures metaphorical shapes and forces from the terrain. His exuberant landscape, still life and floral subjects explore the expanse of nature, showcasing the national essence of our universe. By highlighting the phenomenon that majestically defines Mother Nature, his sunlit serene landscapes and opalescent floral still life paintings express the sublime rejuvenation of experiencing the natural world. The powerful energy of nature’s divine grace is magnified by his expressive color palette, in which the balance of bright and muted tones creates a dynamic rhythm and vivid sense of space. The resulting images conjure up a world that feels utterly believable and real, while remaining part of the artist’s inner, personal vision. With an intense focus on the subject matter which



*Dead Tree, Oil on Canvas, 24” x 28”*



*Loring AFB Maine, Oil on Canvas, 18” x 24”*

allows him to amplify the beauty of nature, Frank Hoeffler’s compositions anthropomorphize into a spiritual harmony uniting humankind with the universe as his artworks become meditative portals for viewers to contemplate. Through his creations, he transports the viewer to a natural paradise where one may revel in the power, purity and sanctity of nature. Manifesting a sacred simpatico with nature, Mr. Hoeffler imbues his bountiful canvases with a spirit of freedom, resonating with visual majesty and sublime power. An emotional quality is transmitted which becomes the true essence of his paintings, using the medium of paint and canvas to become a symbol of one’s emotions about the natural world.

Both modern and timeless, Frank Hoeffler’s masterful compositions provide beauty and inspiring concepts as he commemorates the splendor of nature and immortalizes the permanence of our natural world. Wishing to enshrine that which is beautiful, he freezes lyrical scenarios and offers a permanent remembrance of charming panoramas which





inspire through their peaceful serenity. The award-winning artist Frank Hoeffler showcases his artwork in solo and group exhibitions throughout the United States and Europe. Treasured in both public and private collections, Amsterdam Whitney Gallery is proud to showcase the nature-inspired works of this natural art star!



*Marsh in Washington County Wisconsin, Oil on Canvas, 18" X 24"*



*The Path in the Woods, Oil on Canvas, 18" x 24"*

# SANDY ISELI

---



*Pink Rhapsody, Acrylic on Canvas, 40" x 47"*

**M**arina Abramovic mused: “The world doesn’t need an artist who shows reality as it is.” Inspired by this philosophy, Sandy Iseli’s masterful abstract landscape oeuvre illustrates her expressive response to the environment. Through adroit painterly skills, Sandy Iseli renders a visceral reinterpretation of the environment, a new dress for Mother Nature to wear. Infused with the serene beauty of nature, Sandy Iseli creates paintings which serve as windows into her innermost world of emotions. Finding inspiration from the natural terrain, she imbues her canvases with a dynamic energy, layering pigments to create a rich tapestry of hues and textures.

Color and light intermingle to create a fantasy that reflects the reality and unreality of it all, something that is idealized and yet still rings true to the actual world. Sandy Iseli states: “My inspiration comes from nature: grasses, trees, flowers, water, sky and earth are seen in



*Dancing in the Breeze, Acrylic on Canvas, 40" x 47"*

my paintings. I love bright colors and paint with acrylics on canvas. My wish is to raise the awareness of the viewers with my paintings so that they can really see and feel and celebrate the endless beauty of nature and use this awareness to help save our environment.”

Intuitively reflecting on the expressive color and design of nature, Sandy Iseli transcends the limitations of the everyday with expressionist dioramas which juxtapose serene natural settings with the dynamism of tactility and color. Exemplifying a complete understanding of her inspiration of the world, Sandy Iseli’s rich tapestry of colors, shapes and textures visually map out her pictorial responses to the universe. A visual counterpoint to her landscape oeuvre, her painterly techniques encapsulate the atmosphere and aesthetics of the lush terrain. Drawing from the artistic language of the Impressionists and Expressionists, the artist paints the ways in which light affects form. The resulting compositions emblemize a transient moment in nature as she conjures feelings and experiences of being at one with the natural terrain. Re-calibrating a unique response to the pictorial universe and the vast expanses of the rhythm of nature, Sandy Iseli skillfully brings the vibrancy of her landscapes to life with a dynamic visual force. Painted with panache and an acute passion for color, she employs generous spectral hues which are boldly expressive, resulting in an exuberant and tactile surface. The imprimatur tones



*Ocean Meadowr*, Acrylic on Canvas, 40” x 47”



*Mystic Moment*, Acrylic on Canvas, 47” x 40”

of her colors burst forth from the canvas with an explosive and effervescent charm and this fluid choreography of painterly gestures and hues becomes the catalyst which empowers her canvases to become excitingly alive. Through contrasting colors, she imparts the essence of amorphous nature as she synthesizes singular, meaningful moments that define her individual impression of the world.

Imbued with a luminous sense of transcendence, the world is re-envisioned with fresh eyes, Sandy Iseli’s virtuosic masterpieces manifest the eternal and visceral. Saturated with color, light, form and texture, she offers a rich sensory tableau that illuminates the emotional intensities of nature. With a spectacular electric vigor, this passionate dialogue begins with a fluid, tactile visceral experience and ends with a syncopated commemoration of the natural world. Born in Nevada award-winning painter Sandy Iseli now resides in Switzerland. Participating in a lifetime of immersion in the arts, she has embarked on a global painting career which has catapulted her into a meaningful international position in the contemporary art arena. Recipient of several awards, she has enjoyed numerous successful exhibitions throughout the U.S. and Europe and is showcased in prestigious collections both in the U.S. and abroad.

# SARA MCKENZIE



*Fresh Powder*, Mixed Media on Cradled Wood Panel, 36" x 30"

Rich expressive hues intersect on the canvas conveying a message of hope and peace as she encourages us to inhale the beauty of nature and embrace its joie de vivre. Reminding us that nature is a source of sustenance and happiness, Sara McKenzie encourages us to exhale its joy. Dancing between a gossamer atmosphere, color and light, her ethereal terrestrial kingdom intuitively focuses our vision on a moment of serenity, revealing an elemental and transcendent syntax between atmosphere and glowing light. Transcribing her huetopian passion into dynamic canvases that exude heartfelt beauty, her powerful colors and forms breathe life into each composition.

With bravura and elan, Sara McKenzie's imaginative quest for new artistic horizons explores abstracted inner visions of Mother Nature, transforming interpretive realms into poignantly mystical beautiful works of art. Lusciously layered expressive strokes in vibrantly colored hues, illustrate visceral compositions expressing sentiments and feelings inspired by our surrounding world. Luminescent in execution, shimmering colors and powerful lines intermix to create a single harmonious composition, sensationally catapulting viewers' attention towards infinite imaginative interpretations.

**P**aul Gauguin proclaimed: "Art is an abstraction; as you dream amid nature, extrapolate art from it and concentrate on what you will create as a result." Inspired by Gauguin's credo, Santa-Fe based artist Sara McKenzie's illuminated dreamscapes translate the juvenescence and glory of nature, creating a spectral paradise on earth. Through the transcendence of color, Ms. McKenzie's dream-like, majestic, abstracted landscape imageries are luminescent metaphors for the bounty of the terrestrial kingdom, encapsulating the lyrical essence of feeling at peace with the land. Through abstracted expressionistic reveries, she orchestrates an ethereal fusion of beauty and mystery, to reflect the wonderment of natural environs.

Synthesizing nature into a symposium of line and soaring color, Sara McKenzie portrays sublime visions of the terrain. With an innate sensitivity, this gifted artist's oeuvre joyfully communicates the exuberant language of the abstracted floral and landscape realm through undulating bursts of color. Timeless and transitory, her arresting visceral visions encapsulate an idyllic, contemplative serenity where the presence of light and shadow radiate divine visual poetry. Transcending our contemporary setting, her heaven-on-earth paintings convey the inherent harmony of humanity's relationship with nature and wonderment of our universe manifesting them into sublime objects of beauty.



*Garden Path*, Mixed Media on Cradled Wood Panel, 36" x 30"

# ELKE JUNGBLUTH



*Move On 20210108, Acrylic on Canvas, 19.69" x 19.69"*

Abstract Expressionist painter Hans Hofmann proclaimed, "The whole world, as we experience it visually comes to us through the mystic realm of color." Contemporary German painter Elke Jungbluth explores the various formations of color's spectrum by investigating the diverse relationships between opulent hues. Dramatic, volatile layers of color combinations along with unexpected contrasting lines introduce us to intangible emotions as her technical skill ensures that each painting is tightly constructed and aesthetically sophisticated. Challenging the viewer to move beyond initial perception to personal impression, this virtuosic master opens our mind and soul to the world. Investigating color theory by exploring highly saturated hues and delicate tints and shades through numerous application methods, build the canvases textured appearance through energetic, and dynamic brushstrokes.

Elke Jungbluth's poignant masterful Expressionistic paintings intriguingly explode in a burst of emotion as the rich texture energetically bounces across the canvas. Powerful, multidimensional, short, fast brushstrokes dance with several layers of vivid color, adding a prismatic quality and tactility to her canvases. Juxtaposing dynamic brushwork, textures, and kaleidoscopic hues to animate the canvas with an assertive addition of streaks of paint, streams of color planes blaze beyond the canvas boarder. Through the interplay of these electric hues, Elke Jungbluth's paintings compare and contrast disparate colors result in a synergy of form.

A virtuoso of her generation, Elke Jungbluth demonstrates an unrestrained approach to experimentation when it comes to her own art. In her newest body of work, "Moving On," the artist reinvents her style once again and explores the deconstruction of her subject, merging the representational with the abstract in a fragmentation of color, shape, and line. Her abstract artistic vision invites viewers on an emotional journey of color by translating experiences of the world and transcribing them into painted compositions.

Visualizing inner worlds and morphing them into outer realities, Elke Jungbluth is guided by a sense of freedom, spontaneity, and attention to process, as she seeks to create an abstract visual language. Translating her passion into dynamic canvases that exude heartfelt beauty, her powerful colors and forms breathe life into each composition. Defined by her juxtaposition of harmony and movement, Ms. Jungbluth employs dramatic volatile layers of color combinations to convey intangible emotions that burst with gestural swaths of bold tones and brilliant plays of light. As the rhythmic, fluid abstraction abounds, prismatic forms are an exploration of shape and hue that result in a mesmerizing narrative tableau. A strong expressionistic vista of the complexities of life and nature extend beyond pure abstraction into something more recognizable.



*Move On 20210105, Acrylic on Canvas, 19.69" x 19.69"*

# ANNETTE TAN



*Misty River, Acrylic on Canvas, 17” x 21”*

Following the credo of Henri Matisse who declared, “An artist must possess Nature. He must identify himself with her rhythm, by efforts that will prepare the mastery which will later enable him to express himself in his own language,” California artist Annette Tan’s evanescent landscape paintings transcribe nature in her personal visual lexicon. Translating on canvas her unique artistic vision of the world, Ms. Tan’s brilliantly colored expressionist nature reveries illuminate the effervescent energies and fleeting dynamism of the natural realm. Through a spectral color palette, she invites a spiritual contemplation of the wonderment of the natural terrain as she fuses the dazzling imagery of nature with the sensation and emotionality of powerful painterly expressions. Wishing to enshrine that which is beautiful, she freezes scenarios and offers a permanent remembrance of the temporality of the terrestrial kingdom.

Through the transcendence of color, Ms. Tan’s dream-like, majestic landscape images are visual metaphors for the bounty of the terrestrial kingdom. Celebrating the kaleidoscopic color patterns of nature and its reflective surface in the landscape, she rejoices in Mother Nature’s lush curves and impassioned colors. With unique imagination, this gifted artist’s oeuvre joyfully communicates the exuberant language of the landscape realm through undulating bursts of color.

A myriad of rich expressive hues intersects on the canvas with a beautiful intermingling of tones contribute to a feeling of tranquility and charm. By translating nature’s eternal grace, she adroitly encapsulates nature’s everlasting presence, and allows the emotional power of the landscape to filter into her canvases. Ms. Tan challenges the viewer to treasure the wonders of the land and the result is a radiantly dramatic remembrance

of an encounter with nature that transcends the everyday.

Both modern and timeless, Annette Tan’s commanding compositions provide beauty and inspiring concepts as she commemorates the splendor of nature and immortalizes the permanence of our natural world. Her arresting visceral vision encapsulates an idyllic, contemplative serenity where the presence of light and shadow radiate a divine visual poetry. The viewer is displaced from his contemporary setting and feels he is on the cusp of another timeless yet transitory otherworld. Conveying a message of hope and peace, Annette Tan encourages us to inhale the beauty of nature and exhale its joie de vivre. Her oeuvre reminds us that nature is a source of sustenance and happiness, symbolizing the love for the world we all share.

Encapsulating the verdant fertility and chthonic beauty of the environment, Annette Tan’s expansive, elegant paintings revel in the natural beauty of the land and rejoice in its graceful energy. Sophistication in execution and stunning in effect, her landscape oeuvre cajoles the viewer to connect into the world. Eternally captivating, her oeuvre are gems of the landscape genre, catapulting her to national and international recognition to become one of the U.S.’ most celebrated artists, gracing viewers with her compositions of the sky and the earth.



*Italian Villiage, Acrylic on Canvas, 28” x 20”*

# NERYS LEVY

**N**orwegian environmental activist, Greta Thunberg declared: “We all have a choice. We can create transformational action that will safeguard the living conditions for future generations. Or we can continue with our business as usual and fail.” Deeply rooted in this belief of ecological activism, Dr. Nerys Levy’s artwork illustrates and disseminates the message of “Save our Planet.” Sharing a co-relationship with Mother Earth, she has globally worked on many continents bestowing her passionate artistic message of conservationism of our ecosystem. Communicating her love of the environment through her art, she educates the community about climate change and encourages her audience to preserve, protect and conserve the environment and the bounty of Mother Nature.

Committed to environmental advocacy through her landscape paintings, Dr. Nerys Levy champions the triumph of nature as she pays homage to the fragility of the earth. As witnessed by the artist during her travels to the Norwegian Arctic and Antarctica, Dr. Levy states: “My paintings capture the beauty of Earth’s Polar regions and allude to warmer atmospheric temperatures and melting ice caps that rise on planet Earth.” Galvanized by the impact of climate change on our environment, she is grounded in defending our ecosystem, urging us to preserve the legacy of our land. By addressing the escalating environmental crises, her oeuvre is a catalyst which reflects the profound impact of climate change on our planet. Accentuating the artistic connection between humanity and nature, she shines her artistic spotlight on the fragility of our ecosystem as she re-kindles a renewed reverence and stewardship for the Earth.



*Sea Ice #2, Acrylic Ink and Paint on Paper, 30” x 23”*



*Warming Skies #2, Guache, Watercolor, and Acrylic Ink on Paper, 25.5” x 40”*

From early childhood, Dr. Nerys Levy has possessed a love for creativity and a deep concern for preservation of the environment. Welsh born, educated in the United Kingdom, and now living in Chapel Hill, North Carolina, Nerys Levy channels her passionate conservation mission into her art. Inspired by her Welsh background which has influenced her painting, her Polar experiences have resulted in her deep long-term commitment to educating the community about climate change and her work was shown at four North American museums in the traveling exhibition “Vanishing Ice.” The Arctic/ Antarctic section of her website The Art of Nerys Levy is being promoted as a valuable educational resource for elementary school children by Disney Penguins- Disney’s educational platform, the UK’s Times Educational supplement’s website and the UK Schools Inspectorate. Nerys Levy also teaches art at FRANK Gallery, Chapel Hill where she chairs that Gallery’s outreach endeavors.

# SADY PINEDA

Visually guided by Latin American artist Fernando Botero who advised, “A painted landscape is always more beautiful than a real one, because there’s more there. Everything is more sensual, and one takes refuge in its beauty,”

Paraguayan-New York based artist Sady Pineda re-contextualizes expressionistic dioramas of nature which illustrate the fleeting and fragile beauty of the natural terrain. With a spiritual connection to the vital spirit of the landscape, Sady Pineda acknowledges having a personal dialogue with Mother Nature. Conveying nature’s richness, her illuminated tableaux invite nonverbal communication with the terrain as she portrays an atmospheric richness in her dream-like terrains. Discovering a delicate balance between earth and sky, realism and abstraction, Sady Pineda’s sensorial realm captures the ephemeral essence and power of nature with a sense of internal energy.

Lyrical interacting huetopian color along with luminescent light, Sady Pineda’s visceral dreamscapes are an artistic homage to the natural universe where a symbiosis of color and light interact to accomplish complex and highly texturized compositions. Creating an emotional response to nature, her saturated oil and acrylic on canvas panoramas explore a variety of surface qualities where heavily saturated color flows across the canvas. Enticing and mystifying the senses with an amalgamation of complexly hued layers of color and impasto textures, her oeuvre becomes a topography of feelings and placement within. harmoniously myopic canvases. The dazzling use of color on multiple visual planes enlivens our experience not only with her paintings, but with our relationship to colors seen in our daily environment. Luminescent flowers, trees and other organic forms of the landscape become lyrical portals which transport the viewer to a magical aesthetic realm where she highlights the beauty and excitement of nature. Driven by luminescent creativity, Ms. Pineda paints the wonderful world in all of its glory by capturing the ever-changing magnificence of the natural terrain. Visually resembling nature’s bounty but never defining exact places, Sady Pineda invites the viewer to personally interpret scenes wherever the imagination



*Magma and Water*, Acrylic, Oil, and Gold Leaf on Canvas, 41” x 44”

sees fit, involving their own memories, thoughts, and fantasies. Renowned for her sumptuous aesthetic compositions which convey the universal beauty associated with nature, her impassioned oeuvre envelops the audience with their exquisitely sumptuous forms and ebullient spirit.

Dancing between atmosphere, color and light, Sady Pineda’s magic terrestrial kingdom intuitively focuses our vision on a moment of serenity, revealing an elemental and transcendent syntax between atmosphere and glowing light. Relishing Mother Nature’s divine essence, she gracefully reveals the elegance and beauty of the world with her huetopian wonders of nature as she invites us to inhale the beauty of the terrain and to exhale its joy. As she challenges the eye with her expressive nature paintings which reflect the visceral qualities of nature, her profound visual odyssey explores the spirit of the universe. With bravura and elan, her imaginative quest for new artistic horizons explores inner visions of Nature, transforming interpretive realms into poignantly mystical beautiful works of art.



*Spring Blooms in Central Park*, Oil, Oil Stick, and Gold Leaf on Canvas, 36” x 36”



# LIHONG ZHANG



*The Lotus NO. 20, Oil on Canvas, 20” x 24”*

Claude Monet declared, “I am following Nature without being able to grasp her... I perhaps owe having become a painter to flowers.” Lihong Zhang paints the brilliant wonders found in our natural world, externalizing the spiritual inner visions of nature which are not readily apparent to the human eye. Acutely connected to the aesthetics of the terrain, Lihong Zhang’s oeuvre intermingles East meets West, culminating in a romantic sensitivity to the natural elements. Reflecting her fascination with the external realm, she explores the fragility and intensity of the inner terrestrial world, echoing the beauty and energy of the floral kingdom.

Tempered with a delicate ambiance, her works balance the fragile relationship that humanity shares with Mother Nature. Heightened by a sense of subtle contrasts, Ms. Zhang emphasizes the ephemeral and fleeting composition of nature as she illustrates the sublimity of the natural world. Rediscovering the enchanting bounties of nature, she paints chromatic lotus flowers in bloom as she captures the energy of whistling flowers dancing about a summer’s warm breeze.

Often referred to a poet who paints in color, Lihong Zhang’s atmospheric expressionist dreamscapes depict an imaginary vision of the origins of the natural world. Portraying prismatic, breezy petals which whirl and swirl through her opulent canvases, she seeks to provide the right energy to harmonize nature in our environment. Conveying a sensorial cauldron of images of the terrain,

gossamer glimmers of light are interspersed with radiant hues to imitate the actual movement of flowers which sway in the open air. With dramatic effects, Lihong Zhang’s floral realm reflects a highly romanticized view of the terrestrial realm. Sensitive lightning contributes to a fascinating tension between the intricate lines and their highlighting details which illustrate an extraordinary reflection of nature. By means of the delicate use of color, shape, and texture, she records the symbolic perspective of the terrain. Spiritually conveying nature’s rhythm, Lihong Zhang magically creates an experience of nature’s perfect harmony. Skillfully awakening the collective unconscious of the sensations that only nature is able to transmit, she portrays the inner peace and, harmony of the topography. Through an expressive application of paint, Ms. Zhang transforms what may be considered an ordinary floral painting into something unique, composing each scene into something out of a dream.

Internationally recognized, Lihong Zhang’s masterful floral paintings have catapulted her to global status, becoming one of the most celebrated floral artists. Brilliantly translating onto canvas with a syncopated beat the magnificence of nature, this award-winning painter has participated in a lifetime of immersion in the arts, culminating in an outstanding body of work. The award-winning artist Lihong Zhang has enjoyed much success worldwide, exhibiting in solo and group exhibitions throughout Europe, Asia, and the United States.



*The Lotus NO. 37, Oil on Linen, 23.62” x 23.62”*

# NICHOLAS AMBRIZ

Inspired by Ansel Adams who observed “Landscape photography is the supreme test of the photographer,” California photographer and painter Nicholas Ambriz’s photographic compositions appear as if they could be paintings or drawings. By blending mediums to explore the harmony between structure and artistry, he finds inspiration which transcends the physical realm. With a profound emotional connection to the world around him, his artwork reflects his deep reverence for nature and his desire to capture its essence. Optically as well as emotionally revealing, Nicholas Ambriz’s photography expands both his own and his viewers’ personal vision as we have a physical, psychological, and spiritual connection with the topography of the realm.

Influenced by his Mexican heritage and British upbringing, Nicholas Ambriz’s visual dialogue encapsulates the divinity of nature. Celestially dramatic, his atmospheric photographic compositions vibrantly bring nature’s artistic language alive through his “third eye’s” aesthetic lexicon which intermingles the emotional impact of the natural terrain. Translating the environment’s essence, he



*Declining Flower 10, Digital Photography*

illustrates that a landscape is not just a surface or physical component of the earth, but a universal artistic and emotional narrative.

Seeking to link the visual with the personal, Nicholas Ambriz’s virtuosic photography bridges the gap between a realist rendition and a world shaped by emotional perception. Epitomizing the quest to capture the complex, fleeting patterns of nature, his lens is as much a response to personal memory as an act of interpretation and invention. Dramatic coloration is his signature imprimatur as his camera’s vision reverberates with the evanescent temporality of nature.

Imbuing his breathtaking works with a sense of emotion that transcends the picture plane, his photography envelops the viewer in the majesty of his awe-inspiring scenes. Inspired by the bold iconography of nature, his lens juxtaposes the vibrant dynamics of the natural world and creates pulsating, confident photographs. Chromatic layered ribbons of burnt orange, cerulean blue and fiery red mirror the physical world as his distinctive signature landscape photography projects the majesty of nature.

Sharing a co-relationship with Mother Nature, Nicholas Ambriz’s photographic compositions augment a sense of eternalism in which the subjectivity of experiencing nature is paramount. Having cultivated a strong reputation in the national and international photography art world, his oeuvre has earned accolades for translating nature’s calming and healing influence on our natural environment. The recipient of numerous awards, Nick Ambriz has enjoyed several successful exhibitions and the presence of his works in prestigious corporate and private collections affirms his continually expanding reputation.



*Declining Flower 12, Digital Photography*

# KATHY STANLEY

---

Judy Chicago stated, “I am trying to make art that relates to the deepest and most mythic concerns of humankind, and I believe that, at this moment of history, feminism is humanism.” Championing women, Kathy Stanley’s female-centric oeuvre is an artistic exploration of women’s relationship to nature. Celebrating images of the female intermingled within a mystical environment Kathy Stanley’s female figures take on a monumental quality, radiating power and divinity. Celestially dramatic, her atmospheric “she-roes” on earth are galvanized by a syncopated artistic language that allows her creative lexicon to interweave the emotional impact of the human experience. Aesthetically captivating and emotionally uplifting, her dazzling visual syntax reverberates with a rich tapestry of the wonders of the power of women.

With the belief that there is a seismic change occurring in the status of women in Western and other societies worldwide, Kathy Stanley is convinced that the artist can play an important role in furthering this historical transformation. Emphasizing the primal relationship of women and nature, she adroitly blends figures into the background and places them as the central focus of the composition. Exploring woman’s primal roots, her ability to birth, and her goddess-based spirituality, the compositional narratives are inspired by a chronology of art history and female mythology and prowess.



*Starry Creatix*, Acrylic on Canvas, 30” x 24”

---

# SALLY RUDDY

---

Franz Marc proclaimed: “Today we are searching for things in nature that are hidden behind the veil of appearance. We look for and paint this inner, spiritual side of nature.” Following this credo, Contemporary Master California artist Sally Ruddy’s romantic landscapes visualize the spiritual inner visions of nature which are not readily apparent to the human eye. Acutely connected to the aesthetics of the terrain, Sally Ruddy’s “Tranquil Visions” series intermingles an exquisite sensitivity to the natural elements. Reflecting her fascination with the external realm, she explores the fragility and intensity of the inner terrestrial world, echoing the beauty and energy of the land, sky, and water. Tempered with a delicate ambiance, her works balance the fragile relationship that humanity shares with nature.

Seeking to provide the right energy to harmonize nature in our environment, Ms. Ruddy illustrates an immense sensorial cauldron of images of the terrain, inviting us to be aware of the colors of nature. Influenced greatly by the work of the early Romantics, Impressionists and Expressionists, her paintings are evocative and immersive, engulfing the viewer in the shifting weather, mood, and times of day. With dramatic effects, Ms. Ruddy’s landscapes and floral oeuvre reflects an enchanted, magical view of the terrestrial realm.



*Chance of Rain*, Oil on Canvas, 21” x 25”

# LORI MOLE



*How Sweet It Is!*, Acrylic on Canvas, 20" x 16"

Influenced by Cezanne's statement: "To paint is not to copy the object slavishly, it is to grasp a harmony among many relationships," California artist Lori Mole transcribes a harmonic aesthetic vision of life. Celebrating special pleasurable moments, symbolized by music and wine, this bon vivant artist rejoices in both quiet times, such as savoring a glass of California red wine, or lively events, such as listening to the cool sounds of jazz. By encapsulating the evanescent temporality of nature, Lori Mole's compositions illuminate the dynamism of our treasured environment, correlating the direct link between the harmony of nature and happiness.

Visually declaring the *joie de vivre* and beauty of life, her oeuvre underscores that nature is universal and can be experienced and enjoyed by everyone. By reminding us that the natural elements are accessible to all, Lori Mole adroitly re-creates the tangible as well as the intangible essence of our natural world. With her unique ability to employ polychromatic color to achieve ethereal clarity, she encapsulates fragments of eternity and freezes them to achieve illuminated visual contemplation. Successfully distilling a singular scene into a single moment in time, she attains a delicate balance by spiritually probing an inner depth and a dynamic power of imagery, resulting in emotive and aesthetically memorable dioramas.

# KASANDRA MCNEIL



*Standing in the Last Rays of the Day*, Oil on Canvas, 26" x 30"

Renoir declared, "An artist, under pain of oblivion, must have confidence in himself, and listen only to his real master: Nature." Responding to this statement, Contemporary painter Kasandra McNeil creates dream-like landscapes and floral paintings as she recontextualizes the natural world into a mosaic tribute to the joys of the environment. Brimming with dynamic vitality, her nature reverie tableaux intertwines organic topographical themes of beauty, peace and enlightenment, achieving a sense of spirituality and love. Reflecting the ethereal joy of the natural universe, she paints spectral scenes of gorgeous flowers, billowing clouds, sweeping hills and bounteous trees. As she sensorially conveys a worldly vision of peace and harmony of Mother Nature, her magical floral and landscape creations recalibrate a mystical realm where there is evanescent color and a divergent spiritual path to light.

Transcribing the wonderment where the sky meets the earth, these enchanted portals to nature metamorphosize into studies of color and light. Fascinated by the light, this absorption is expressed in her artwork – an exploration of the variations and permutations of light which becomes a hallmark of the artist's reverie nature paintings. Often photographing the environment, she not merely records the world that she sees, but rather recreates the emotions she feels, expertly balancing a varied color palette, utilizing color to achieve visual perceptions and emotional responses. Colors rise and fall and explode with contrasts that are dazzling as she interplays depth, juxtaposition, and light, while the materiality of her paint bursts with coloration, achieving powerful three-dimensional tactility.

# LINA YAKOBI

Albert Einstein perceived “Creativity is seeing what everyone else has seen and thinking what no one else has thought.” Multi-disciplinary Digital artist and Inventor of the “Yakobi Method,” Lina Yakobi professed: “I am passionate about inventing, innovating and experimenting.” Conceptualizing the visible with the invisible, she employs the use of a blue light flashlight which reveals the coexistence of two images within the same canvas; one visible in the light and another, mysterious and hidden, reflected only in the dark. Her creative technique is not just a form of artistic expression, it is a metaphor for the

depth and complexity of reality, extending what is visible to the naked eye. In search of spirituality and self-expression, Lina Yakobi intermingles digital art and innovation. With the belief that the five human senses are often insufficient to fully understand the multifaceted world around us, her “Yakobi Method,” offers a view of reality that varies depending on whether one observes it with open or closed eyes, inviting a deeper reflection on our existence. Integrating techniques such as “embroidery within texture” into her works, Ms. Yakobi’s compositions manifest a union of fragility and strength, symbolizing how the seemingly fragile can be resilient.



Installation: *Floral Series*, Mixed Media and *Yakobi Method*, 28" x 28" each

# SMOKEY THOMAS

Emotionally and artistically energized by Cezanne’s philosophy, “A work of art which did not begin in emotion is not art,” New Mexico artist Smokey Thomas’ visceral, abstract canvases invite viewers to explore emotions through the expansive possibilities of a visual, non-objective language. With the quest to transcribe onto canvas the non-representational, her divergent realities of shape and color are transcribed to a complete fulcrum of expressive sensations. Resonating with the verve of abstracted vision, her masterful tableau resonates beyond the interplay of colors and textures, as each composition provides a glimpse inside the human condition. Gestating into a sensory experience, Ms. Thomas’ powerful expressionist work illustrates the emotional essence of the natural world and invites us to imaginatively connect with the universe.

By investigating the deeper truths contained within humanity, the genius of Smokey Thomas’ oeuvre is her translation of this ongoing dialogue of humankind. While engaging in an artistic conversation with the world, her wish is to discover the meaning behind the three-dimensional mask that is human existence. Powerfully challenging the boundaries of conventional art, she viscerally captures emotion and complexity through a fusion of vibrant hues, intricate textures, and dynamic compositions. Cajoling viewers to explore the dynamic interplay between imagination and reality, she evokes a sense of wonder and reflection. Her collection is a testament to her mastery of technique and her ability to communicate profound emotions without relying on figurative representation.



*Questioning Everything*, Oil and Acrylic on Canvas, 40.25" x 30"

# LARRY RANDOLPH

Artistic Time Traveler, Architect Larry Randolph recalibrates history, weaving powerful socio-political-cultural and historical narratives where literature, mythology, and symbolism intertwine in a painterly forum. As he straddles different time periods over various centuries, his dramatic visual dialogues invite audiences back in time, intricately blending classical elements with an innovative, contemporary style. Creating an alternate, hybrid pictorial universe, Larry Randolph re-imagines history with a multi-layered oeuvre which reflects on history and the convergence of cultural experience and events. Through his artistic prism, Larry Randolph's versatile thematic inquiry is humorously intermixed with a curiosity for pushing the boundaries as he juxtaposes iconic images with a contemporary twist. Intermingling allegorical and metaphorical components into his oeuvre, his compelling paintings contain a timeless elegance and a wry, contemporary perspective.



*Smoggy Night*, Oil on Canvas, 30" x 40"

---

# MARK VIOLETTE



*Sacred Circle 4/4*, Acrylic on Canvas, 48" x 48"

Canadian artist Marc Violette states that his paintings are born from the soul and are more than just an image. Fundamentally believing that he is a conduit between the unseen world within and the tangible one around them, his artistic quest is to be "a mirror reflecting the depths of one's inner essence...channeling emotions, memories, and untold stories into colors and strokes, capturing what words often fail to express." The visual dance between the intangible subconscious and the viewed tangible reflects the essence of his inner heart's core to artistically inspire positivity and convey harmony through his art. Nature, in its boundless beauty, serves as both Marc Violette's abstract muse as his art mirrors the rhythms, and light of the universe which resonate with the heart's unspoken truths.

---

# TONY LIAN

Thai-based, Chinese photographer Tony Lian's "Third Eye" translates his abstracted, personal vision of the world conveying the belief that abstract photography is "the language of emotion, a dance of colors, shapes textures, freed from the constraints of realism." Optically guided by the principle of emotion, his crafted lens invites the viewer to interpret and feel what is not seen, accentuating what is sensed. Through his abstracted photography, he recalibrates the reflections and refractions of a remarkable chromatic spectrum of forms and shapes, utilizing the full spectral abilities of the lens to view life. Masterfully manipulating his camera, he intuitively captures a unique vision forming a simulacrum of the topography of the world as his visual dialogues connect his photography to visceral observation of the world.



*Inner Tranquility*, Print on Canvas, 31.49" x 31.49"

# WENDY COHEN

Australian artist Wendy Cohen creates innovative virtuosic, small-scaled, mixed media canvases which spiritually communicate the harmony and beauty of the world. Incorporating her fascination with abstraction, whether it be an entire non-objective canvas, juxtaposed with collage elements, Ms. Cohen metamorphoses her unique vision of revealing the invisible with the visible as she explores an inner aesthetic terrain resonating with a visual invocation. Wendy Cohen's dazzling abstract Expressionist paintings project an alternate sense of reality, one which is not based solely on what is visible but rather another reality. Overlapping vibrant colors contribute to an organic, sensorial sensation of the natural world as her color wheel alternates between vivid bright and sensual jewel tones and swaths of space.



*Sunbeam Irradiation*, Acrylic, Recycled Paper and Markers on Canvas, 24" x 18"



# JACK JASPER

Creating an alternative visual universe on canvas, Jack Jasper's semi-figurative abstracted acrylic on canvas forms co-exist in a chimerical parallel realm. Metaphorically articulating intellectual themes ranging from Greek mythology to the natural sciences in his abstracted, semi-figurative oeuvre, his paintings expand viewer's interpretations of existing invisible reality. Classically inspired titles entice the viewers' consciousness to exceed preconceived expectations about representational definitions. Bringing together the two distinct realms of invisible and visible natural existence, actual reality and the imaginative unconscious, he harmoniously fuses them into one single realm by juxtaposing elongated figures.

*Nucleus*, Acrylic on Canvas, 52" x 38"

# JUDY FILIPICH

New Orleans artist, Judy Filipich pays homage to the immense power of nature's color through a non-objective painterly lexicon. Employing an abstract lens, her harmonious color compositions emphasize a prismatic lexicon which reverberates with balance and a dynamic interaction of polychromatic forms. Galvanized by a sense of space and depth, she creates a unique artistic vision, orchestrated by multiple layers and shades of paint to attain an ethereal blend and flow of hues. Her love of the color palette, combined with organic shapes, metamorphs into contemporary abstracts that are bold, beautiful, and brimming with vibrant color.



*In My Mind*, Oil on Silk, 38" x 34.5"

# RONI LYNN DOPPELT



*Blue Waterfall 1*, Acrylic on Canvas, 30" x 40"

Drawing inspiration from Paul Jenkin's discourse on abstract phenomenon, Florida artist, Roni Lynn Doppelt contours the movement of spectral images with creative energies and a dynamic visual iconography. Diaphanous painted acrylic streaks combined with saturated fluid fields of interlocking huetopian color, offer a parallax vision of abstract forms and shapes which are blended into strong, fluid, gestural style. Paramount to coloring the phenomenal, Roni Lynn Doppelt is renowned as a Master Colorist and is recognized for her chromatic, flowing paintings with overlapping painted forms. Celebrating the spirit of Post-World War II Abstract Expressionism, her oeuvre is a fusion of kaleidoscopic colors intermingled with gem-like veils of transparent color.

# DOUG SIMON

**D**OUG SIMON shares a rendezvous with Mother Nature with his luminescent *plein air* dreamscape paintings which are inspired by the light and colors of the terrain, channelling nature's flowing abstract imagery, while recalibrating a fresh perspective of the topography of the land. Reflecting the complex, fleeting quality of nature on canvas, luminescent light fills his lyrical landscapes which portray the sensorial natural realm, masterfully encapsulating the eternal effervescence of nature.



*Pond's Edge with Aster & Goldenrod, Oil on Canvas, 30" x 30"*

# MATI GELMAN



**M**ATI GELMAN'S masterful Digital Collage male-oriented photography serves as a portal to the depths of the male psyche as he visually interprets the tangled web of interpersonal connections with his sophisticated work which is emblematic of life, love and queer identity. Offering a unique and fresh perspective on the influence of social media's algorithm on humankind, he invites us to go beyond the conventional prism, employing the magic and alchemy of the photographic medium, as he illustrates a more inclusive and authentic representation of male identity.

*The Algorithm is the Mind Killer Part II, Collage Photography Giclée Print, 20" x 20"*

# RIC CONN

**R**IC CONN'S symbolic abstract expressionist narratives explore the complexities and interactions of the world, opening a window to the flow of feelings, memories and emotions, as he synthesizes tangible manifestations of visceral emotions which are imbued with powerful, emblematic imagery replete with subtexts about humanity. Catapulting the interior of the world around him into color-filled visions that pulsate with a dynamic quality, he deconstructs reality with dazzling polychromatic images.



*Labyrinth, Mixed Media on Canvas, 30" x 24"*

# HUAI XUAN XIANG - CHLOE



**H**UAI XUAN XIANG -CHLOE'S creative digital and painted fantasy illustrations explore private reveries, tangibly manifesting them on canvas. Paradoxically intermingling images of humankind with nature, she intertwines one image with another, re-conceptualizing a new visual syntax. Drawing inspiration from the mysterious realm of inner thoughts and emotions, her labyrinthine compositions become enchanted windows which feature other-worldly figures and ethereal landscapes.

*Timeless Companionship, Acrylic on Canvas, 9" x 12"*



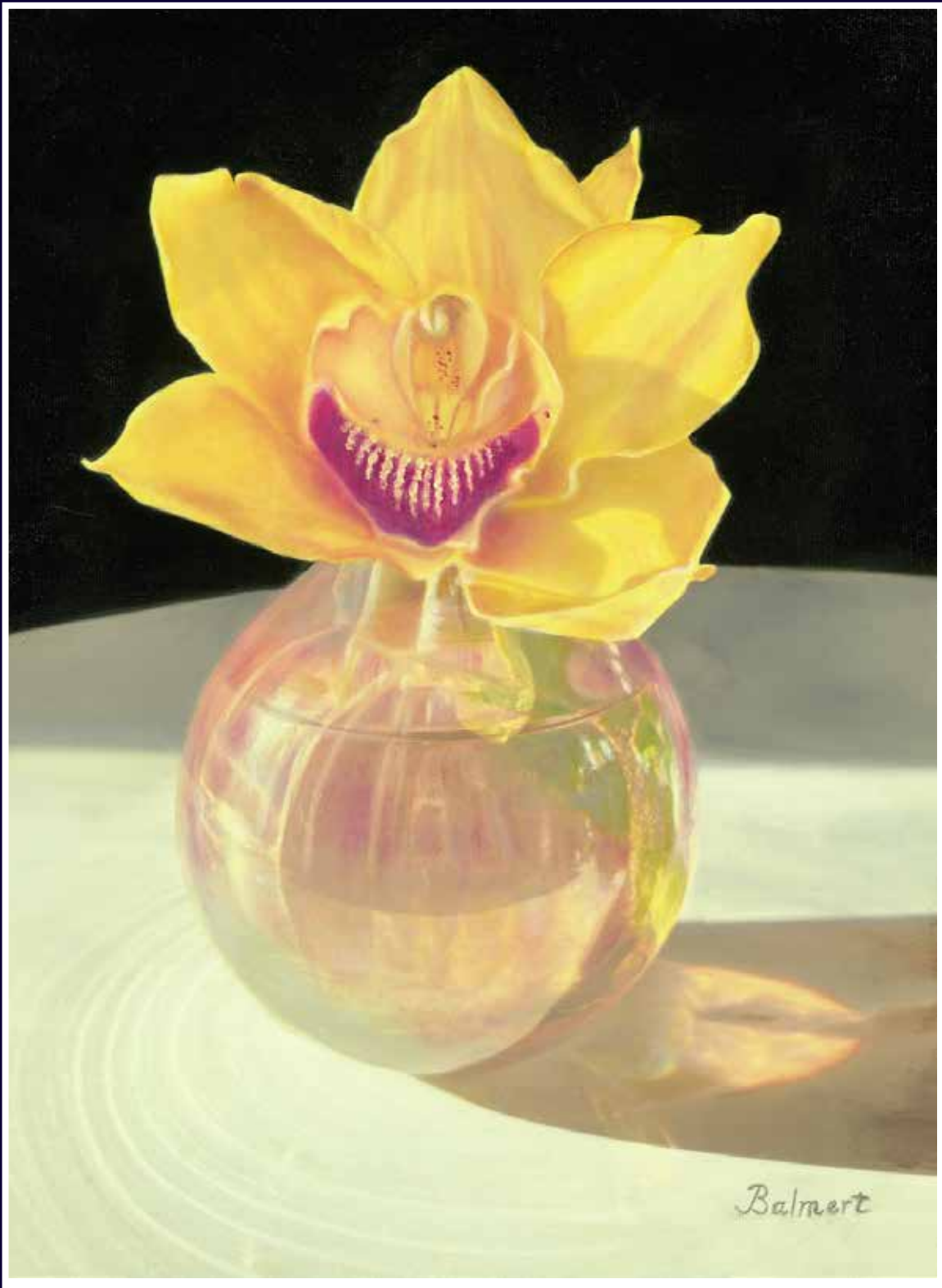
# TOM ASHBOURNE



*Candle in the Window*, Orange Calcite, Copper Gilt, Burl Base, 12" x 7" x 10"

Throughout history a “Candle in the Window” has symbolized hope, safety, and hospitality. A candle in the window is a familiar beacon on dark nights, guiding loved ones home after weeks of hard work. The fissured translucent calcite communicates the fragility of life; the burl base is the transformative nature of family; and the warm copper flame is for love and hope.

# NANCY BALMERT



*Reflections on the Plaza, Oil on Canvas, 14" x 11"*



ART ACQUISITOR MAGAZINE  
Amsterdam Whitney Gallery

